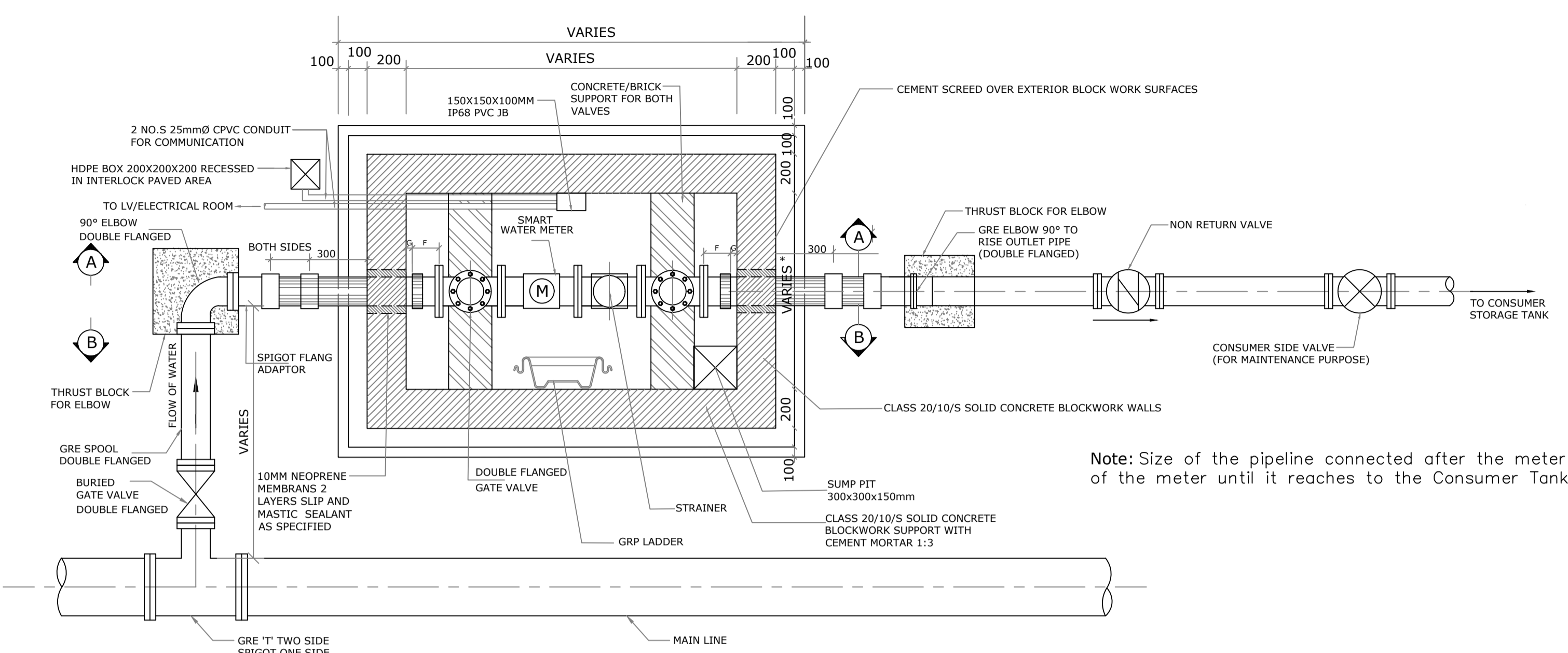


# GENERAL ARRANGEMENT OF METER CHAMBERS WITHIN BLOCKPAVING AREAS

NOTES:  
Refer Bulk Water Meter Installation in Chamber-GRE Connection-Guidelines-Rev3-01.03.2022

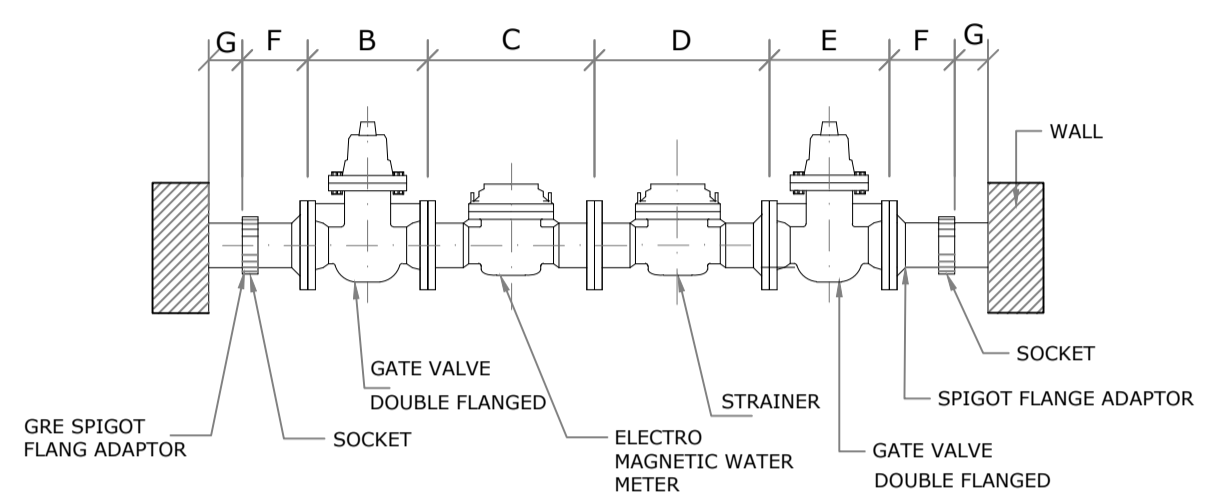


PLAN

Note: Size of the pipeline connected after the meter should be the same size of the meter until it reaches to the Consumer Tank.

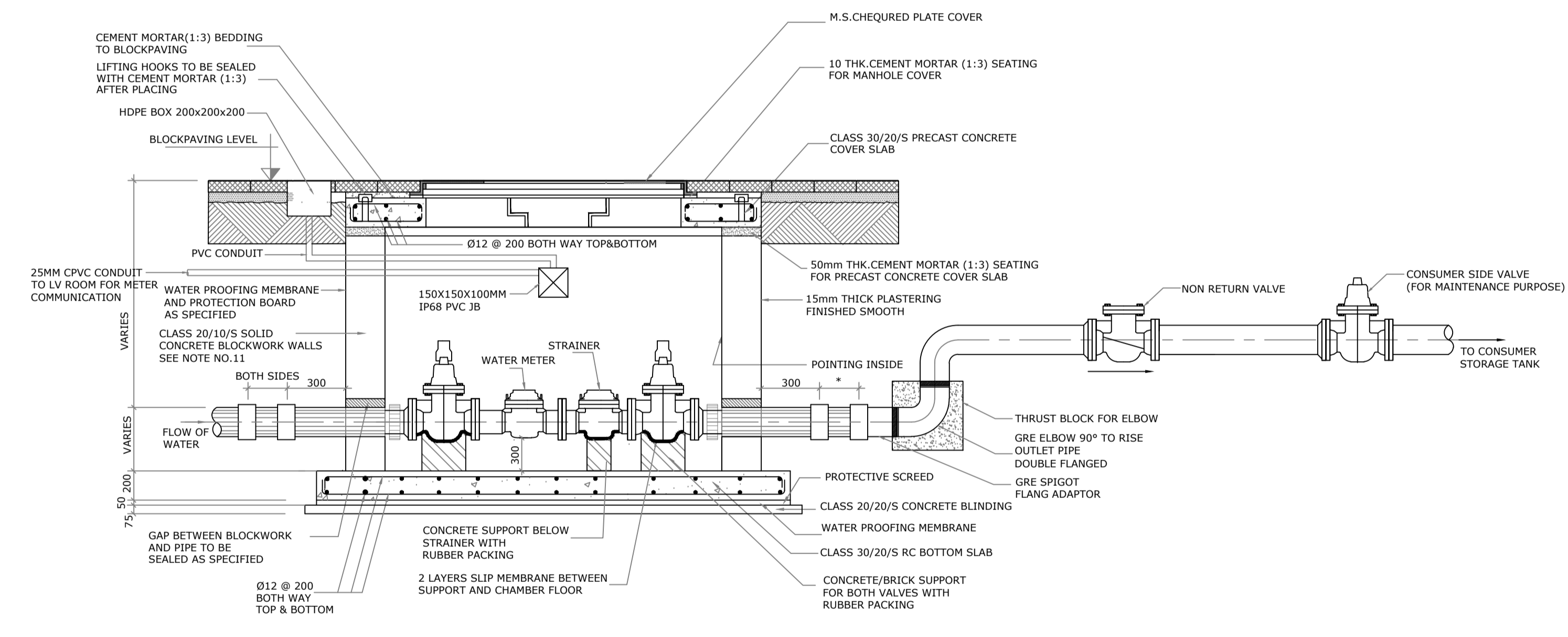
METER CHAMBER DIMENSION											
WATER METER SIZE	INLET VALVE (L)	METER (L)	STRAINER (L)	OUTLET VALVE (L)	SPIGOT FLANGE ADAPTOR (L) F	CLEARANCE BETWEEN SOCKET AND CHAMBER WALLS (L) G	TOTAL LENGTH (B+C+D+E+F+G)	CLEARANCE AT BOTH SIDES OF METER IN WIDTH FROM CHAMBER WALLS	METER WIDTH (H)	TOTAL WIDTH (I)	CHAMBER COVER DIMENSION (Minimum)
50	178	200	300	178	—	250-250(500)	1356	400	110	510	1400X700
80	203	200	350	203	—	250-300(550)	1506	400	140	540	1600X700
100	229	250	350	229	260-260(520)	150-150(300)	1878	400	165	565	2000X700
150	267	300	500	267	270-270(540)	150-150(300)	2174	400	220	620	2200X700
200	292	350	500	292	260-260(520)	150-150(300)	2254	400	280	680	2400X700
300	330	500	500	330	260-260(520)	200-200(400)	2580	400	375	775	2600X800

ALL UNITS ARE IN MM

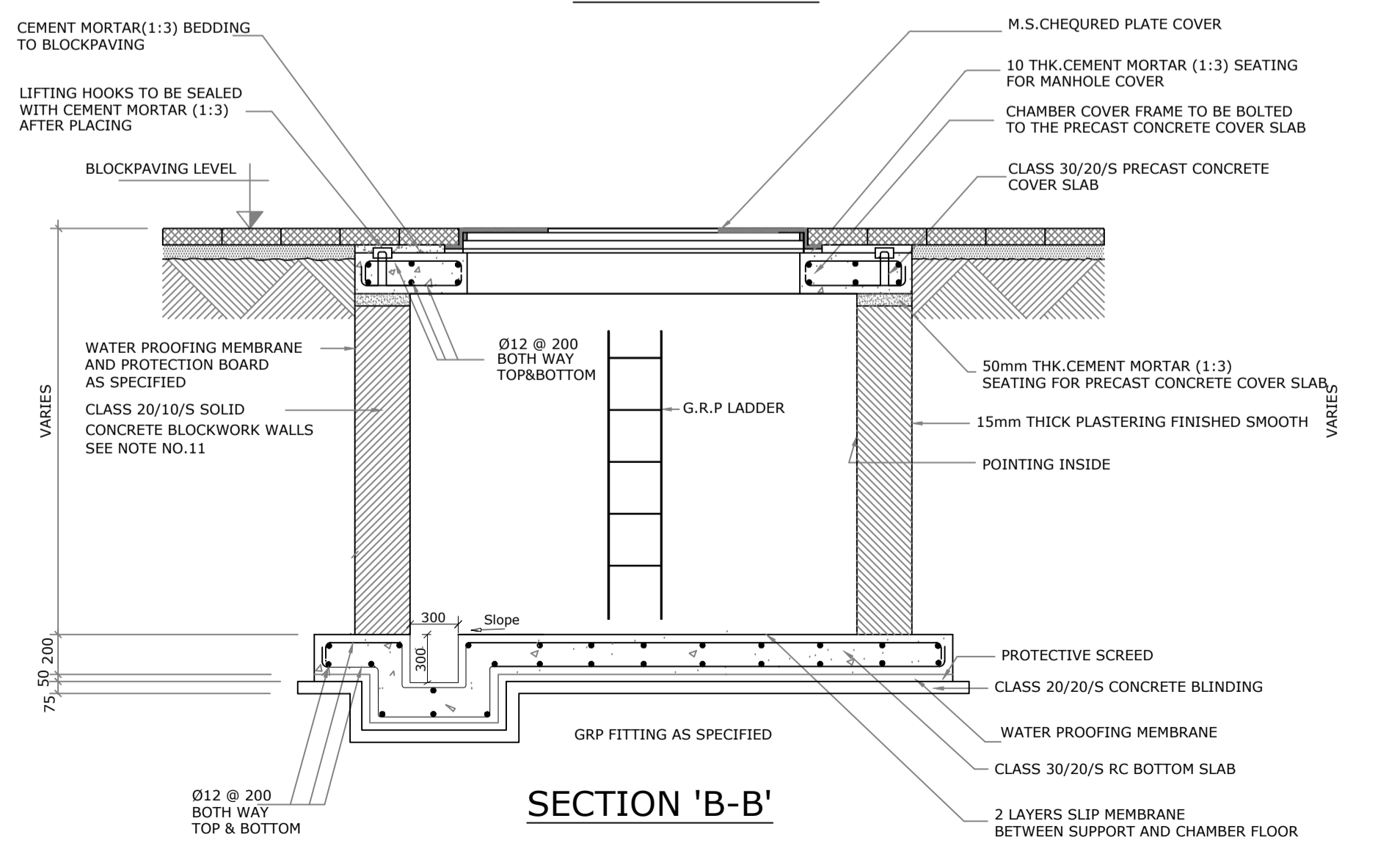


VALVE AND FLOW METER ARRANGEMENT

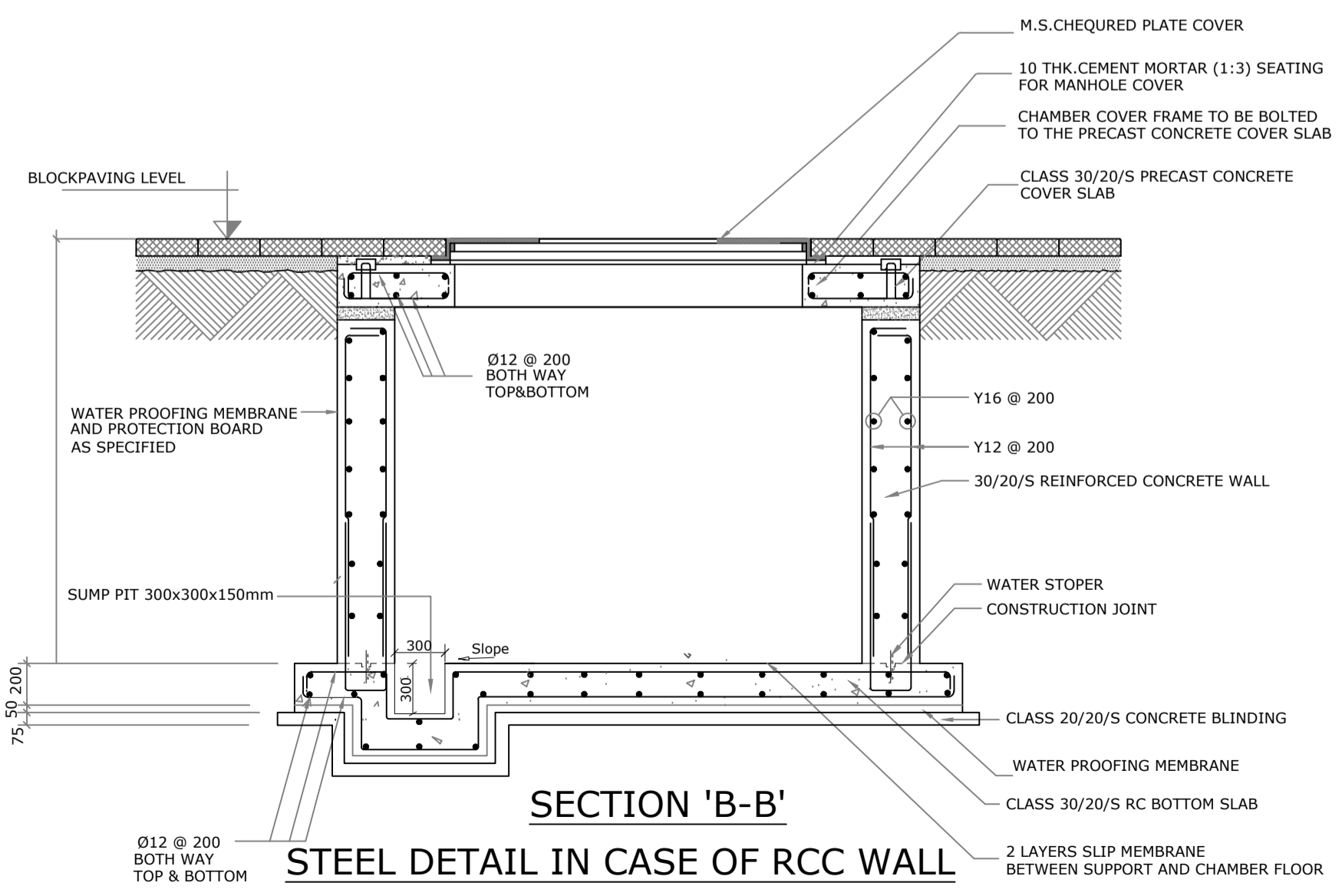
METER SIZE, METER CAPACITY AND STORAGE TANK REQUIREMENTS				
Meter Size (mm)	Meter Capacity/Quantity of Water the Meter can Deliver in 24 Hours (Imperial Gallons)	Pipe Size to be Connected Between the Meter and Storage Tank (mm)	Storage Tank Requirement for Standard Residential Premises	Storage Tank Requirement for Labor Accommodation and other High Consumption Premises
50	40,000	50	Equivalent to 24 Hours Consumption	Equivalent to 48 Hours Consumption
80	100,000	80	Equivalent to 24 Hours Consumption	Equivalent to 48 Hours Consumption
100	150,000	100	Equivalent to 24 Hours Consumption	Equivalent to 48 Hours Consumption
150	350,000	150	Equivalent to 24 Hours Consumption	Equivalent to 48 Hours Consumption
200	750,000	200	Equivalent to 24 Hours Consumption	Equivalent to 48 Hours Consumption
300	1,500,000	300	Equivalent to 24 Hours Consumption	Equivalent to 48 Hours Consumption



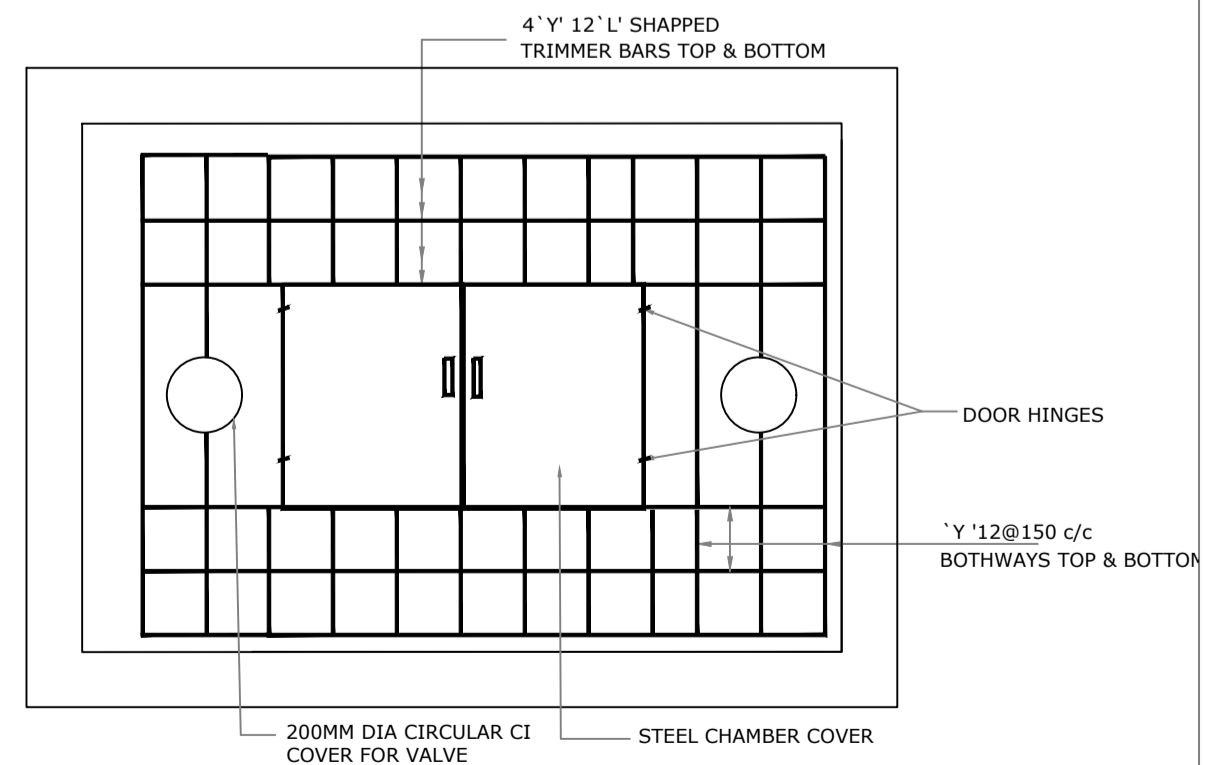
SECTION 'A-A'



SECTION 'B-B'




SECTION 'B-B' STEEL DETAIL IN CASE OF RCC WALL



REINFORCEMENT DETAILS

## AMI 2" to 12" BULK WATER METER (GRE CONNECTION) INSTALLATION IN CHAMBER

REV.	DATE	DRN BY	CHD BY	APD BY	DESCRIPTION
<p>AUTHORITY:</p>  <p>GOVERNMENT OF DUBAI DUBAI ELECTRICITY &amp; WATER AUTHORITY P.O. BOX: 564, DUBAI - U.A.E. FAX: 324 4922, TEL: 324 4444</p>					
<p>DEPARTMENT:</p> <p><b>PROJECTS &amp; ENGINEERING (WATER)</b></p> <p>TEL : 04-3220003, EMAIL: Brandy.N@dwewa.gov.ae</p>					
<p>PROJECT:</p> <p>AMI (ADVANCED METERING INFRASTRUCTURE) WATER METER INSTALLATION</p>					
<p>TITLE:</p> <p>AMI - WATER BULK WATER METER INSTALLATION IN CHAMBER (50MM TO 300MM DIA. GRE CONNECTION)</p>					
<p>PREPARED BY: <i>Shafiq</i></p>		<p>CHECKED BY: <i>A. Bin Saeed</i></p>		<p>SCALE: N.T.S</p>	
<p>DESIGNED BY: <i>Saidin</i></p>		<p>APPROVED BY: <i>Brandy</i></p>		<p>DATE: 27.04.2022</p>	
<p>DRAWING NO: PEW-STD-AMI-004</p>					<p>REV</p>
<p> </p>					<p>3</p>