

Transmission Power Division

Infrastructure Information and Permits Department

Infrastructure NOC Submission Guidelines

Version 3, 2015

“QUALITY BEGINS WITH COMPLIANCE FOR EXCELLENCE TO FOLLOW”

For generations to come

DEWA Strategy Direction

Our Vision

"A Sustainable Innovative World-Class Utility"

Our Mission

"We are committed to the happiness of our stakeholders and promoting Dubai's vision through the delivery of sustainable electricity and water services at a world-class level of reliability, efficiency and safety in an environment that nurtures innovation with a competent workforce and effective partnerships; supporting resources sustainability."

Our Motto

"For Generations to Come"

Our Values

- Integrity.
- Fairness.
- Transparency.
- Teamwork.
- Industry leadership.
- Professionalism.
- Corporate Social Responsibility.
- Customer focus.
- Sustainability.



Sl. No.	Contents	Pages
1	Introduction	4
DIRECTORY OF SERVICES	2.1 Service Name	5
	2.2 Service owner	5
	2.3 Service Description	5
	2.4 Service Procedure	9
	2.5 Service Working Hours	9
	2.6 Service Location	9
	2.7 Service Communication	10
	2.8 Service Fees	10
3	NOC Types	11
4	NOC Types VS Applicant Types	11
5	Infrastructure Project Classification	12
6	NOC Documents	12
7	Necessity of NOC Documents	13
8	NOC Principles	13
9	NOC Submission requirements	15
10	Business Support Contact Details	128
11	NOC Document arrangements	130
ANNEXURE SHEETS	12 Annexure 1 (Covering Letter)	133
	Annexure 2 (Undertaking Letter Format for Dewatering works)	134
	Annexure 3 (Undertaking Letter Format for Lagoons works)	135
	Annexure 4 (Undertaking Letter Format for Shoring works)	136
	Annexure 5 (Undertaking Letter Format for scaffolding works)	137
	Annexure 6 (Undertaking Letter Format for Landscaping works)	138
	Annexure 7 (Undertaking Letter Format for Fencing works)	139
	Annexure 8 (Undertaking Letter Format for Special Tiles works)	140
	Annexure 9 (Undertaking Letter Format for Working Under OHL works)	141
	Annexure 10 (Undertaking Letter Format for Cycle/Jogging Track works)	142
13	Customers Feedback	143

1. INTRODUCTION

In serving the Vision of DEWA “A Sustainable Innovative World – Class Utility” and for achieving the strategic objective “World Class Customer Service”, the Infrastructure Information and Permits Department (II&PD) has developed this latest NOC Submission guidelines for DEWA’s Customers (Authorities, Consultants, Contractors, and other organizations) to provide detailed submission requirements about various types of NOCs with respect to the various type of projects/works.

Moreover, this revised Guideline contains sample technical drawings which provide an awareness, how to prepare the NOC submission drawings for the proposed project with technical details and digital clarity.

In addition, this revision combines two separate submission namely Electricity NOC Submission and Water NOC Submission into one Submission as Electricity and Water NOC Submission. This combination will save time for DEWA’s Customers for applying and submitting NOCs for their projects.

Furthermore, this guideline emphasize the NOC principles which is to be adhered by DEWA customers.

Additional information is added related to other Business Process that is directly / indirectly linked with NOC Business in order to guide the Customer to go through proper channel within DEWA.

Whoever is working for the infrastructure and Network related Projects in the Emirate of Dubai should fully and strictly abide by the “**Law number 6/2015**” for “**Protection of the General Network of Electricity and Water in the Emirate of Dubai**”.

We are working for continuous improvement to serve you and we hope this revision will help and guide the clear path & direction to carry out the Business smoothly in order to reflect the image of DEWA vision.

Infrastructure Information & Permits Department

2. DIRECTORY OF SERVICES

2.1 - Service Name:

Issuing “No Objection Certificate (NOC)”

2.2 - Service Owner:

Infrastructure Information & Permits Department – Infrastructure NOC Section.

2.3 - Service Description:

Infrastructure Information & Permits is a custodian Department for Infrastructure NOCs assigned by DEWA to facilitate the issuance of “**No Objection Certificate**” digitally and manually to customers with technically high qualified Engineers.

No Objection Certificate is an obligatory official document that has to be obtained by DEWA Customers (Authorities / Consultants / Contractors / Private Owners), prior to execute the Infrastructure works (Road Projects / Networks services / General Projects / House Connections / Information & Trial Pits) in the R.O.W / DEWA Reservations / Utility Corridor / DEWA Premises within the emirate of Dubai.

Notes:

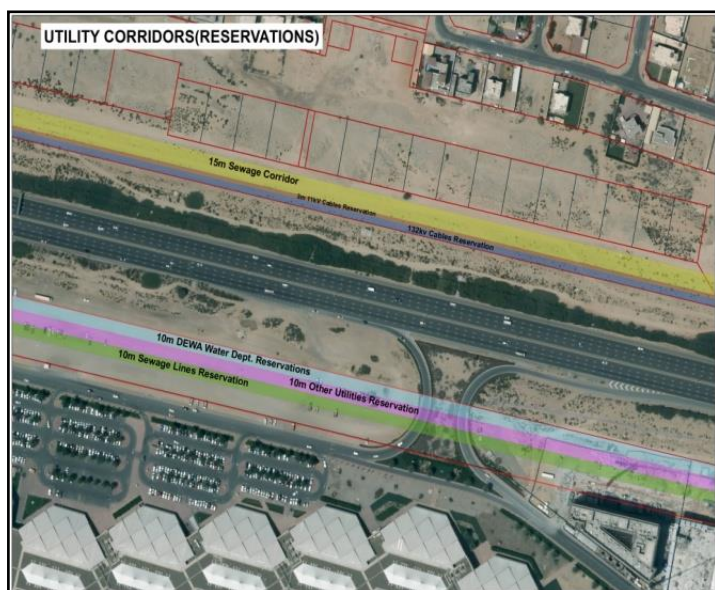
- 1- Infrastructure Information & Permits Department is a custodian to issue NOCs for some Infrastructure related activities inside the plot without power / water supply requirements like: Trial Pits, Shoring, Dewatering, Landscaping, Asphalt / interlock works etc...,
- 2- Any building / structural related activities within the plot limit for power / water supply requirements like: Building / villa / warehouse / Boundary wall / Site Office etc..., the applicant has to obtain NOCs / permits through DEWA Building NOC system (www.dewa.gov.ae).
- 3- All Developer projects that involve Design and Construction of Infrastructure works, not related to building activities; the applicant has to obtain NOCs / Permits from Infrastructure Information & Permits Department (II&PD) through R.T.A E-NOC System (www.rta.ae).

Right of Way



DEWA Reservations





Utility Corridor



DEWA Premises

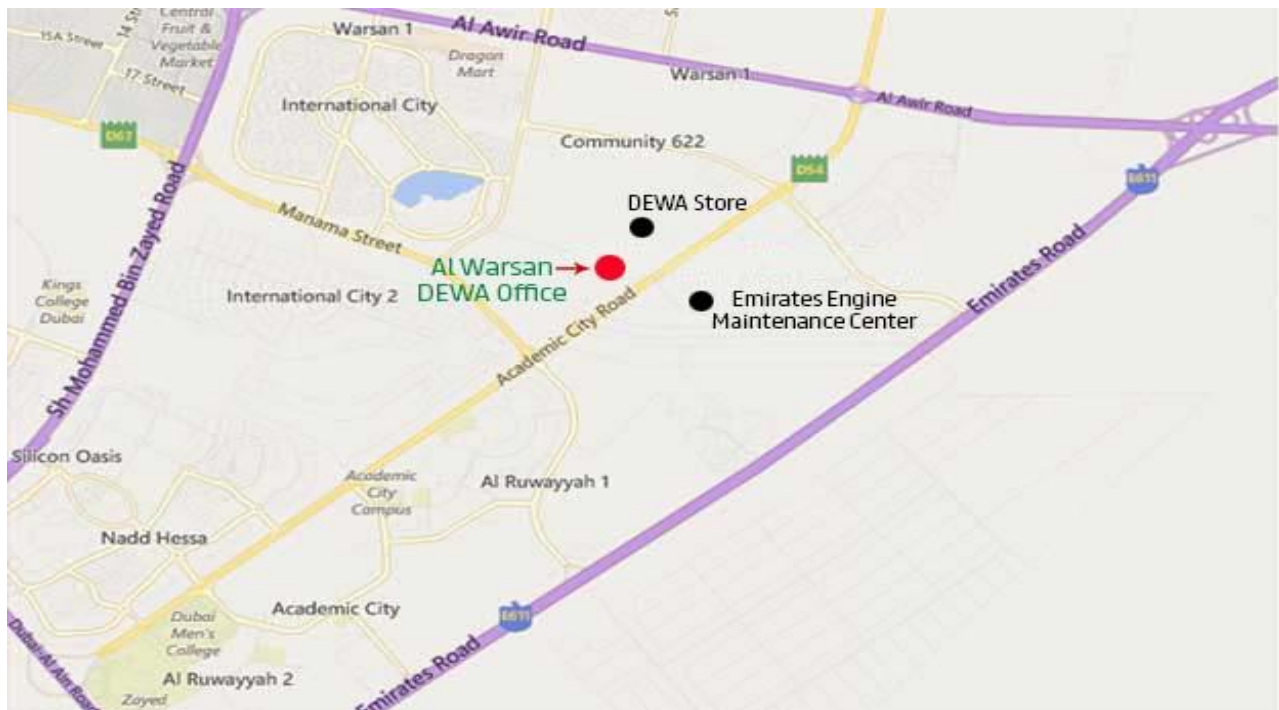
2.4 - Service Procedure:

- Customer should submit the NOC application related to infrastructure works through RTA online portal (www.rta.ae) either digital or manual.
- NOCs related to work within DEWA Reservation/Premises should be manually submitted to II&PD at DEWA Al Warsan Office.
- NOCs related to DEWA services Shop drawings should be manually submitted to II&PD at DEWA Al Warsan Office.

2.5 - Service Working Hours:

Sunday to Thursday: 07:30 am to 02:30 pm

2.6 - Service Location:



2.7 - Service Communication:

Customer can communicate with II&PD to get NOCs services at "Customer Service Center NOC" – Ground Floor - in DEWA Warsan Office as per following:

- **Call Center for General Enquiry:** 📞 04 322 1614
- **NOC Meeting Request:** 📞 04 322 1262
- **Mail:** 📧 TP.II&P@DEWA.GOV.AE

2.8 - Service Fees:

NOC Service is free of cost.



3. NOC TYPES



4. NOC TYPES VS APPLICANT TYPES

NOC Types	Applicant Types		
	Authority	Consultant	Contactor
Information NOC	✓	✓	✓
Preliminary Design NOC	x	✓	x
Final Design NOC	x	✓	x
Trial Pits NOC	x	x	✓
Construction NOC	x	x	✓
Shop Drawings	x	x	✓
<p>▪ Note: The Authority may get the permission to apply Design / Construction as special subject to service authorities' approvals / agreements.</p>			

5. INFRASTRUCTURE PROJECTS CLASSIFICATION



**House
Connections**



General Projects



Network Services



Road Projects

6. NOC DOCUMENTS

No Objection Certificate is a legal document to work within R.O.W / DEWA Reservations / Utility Corridor / DEWA Premises. Whoever is submitting NOC request to DEWA, Infrastructure Information & Permits Department, is issuing NOC on behalf of DEWA. Once the NOC procedure is completed customers can download the NOC documents either from RTA Portal or can collect it from DEWA "Customer Service Center NOC".

NOC Documents contain the following:

- No Objection Letter.
- Approved Drawings.
- DEWA GIS Sheets (Electricity).
- DEWA GIS Sheets (Water).
- Annexure Conditions Sheets (Electricity & Water).
- Permit to Dig Form.
- Work Intimation / Work Supervision Request Form.

7. NECESSITY OF NOC DOCUMENTS

The contractor or the concerned will be legally liable as per **Dubai Government Law Number 6 of 2015**. Therefore the following must be adhered to:

- NOC Approved Document should be obtained by contractor from all the concerned authorities prior to start work at site.
- NOC documents must be available at site all times during construction activities.
- NOC Document conditions must be strictly followed.
- No damages to DEWA services.

8. NOC PRINCIPLES

II&PD highlights the following NOC Principles to Customers for their full adherence and strict compliance wherever applicable in order to facilitate a smooth and quick NOC Business Process.

- This guideline provides submission requirements for the existing available NOC types and Project Types, in case of any new type of project in the future then the required documents will be decided by DEWA II&PD.
- The sample drawings are indicative, no referral made against the sample drawings.
- Prior to submitting NOC to DEWA, extract the technical information from Infrastructure NOC Technical Manual and prepare the drawings accordingly.
- Duplicating/Mimicking DEWA stamp or malpractice the approved DEWA drawings will lead to legal actions as per Law number 6/2015.

- One NOC application is to be requested for one activity. Duplicating the same submission will lead to disqualification of the concerned applicant.
- If the scope of work is changed from the initial submission, a new NOC application should be submitted to all concerned authorities.
- The NOC application will be rejected, if the submitted document doesn't contain technical details / proper scope of work or unclear drawings.
- Only DEWA Approved contractors are eligible to submit NOC Application for the Proposed DEWA services work.
- Approved NOC should be revalidated every six months from the date of approval (Apply two weeks prior to expiry).
- Revalidation will not be issued, if the customer does not take the appropriate actions to revoke the hold area and separate NOC to be submitted for any addition of work.
- If the main contractor decides to assign sub-contractor in the beginning of the project then the sub-contractor details should be mentioned in the drawings.
- Set of undertaking letter samples are attached, however DEWA have the rights to raise additional undertaking letter according to the site condition and project type.
- Confirmation / Letter of Acceptance from the client to be submitted by contractor / consultant when applying for Design/ Construction NOC.
- For Construction NOC, drawings are to be stamped and signed by the Consultant (if any), along with trial pit verification wherever applicable.

9. NOC SUBMISSION REQUIREMENTS

Documents related to the particular project are to be submitted to issue the NOC. Contents of the Project type and NOC type are tabulated below, its sequel required documents are listed.

SNO	Project Type	NOC Type	Page No.	Drawing No.
1	All	Information NOC	19	1.1
2	All	Trial Pit NOC	20	2.1
3	House Connection – Electricity LV Cables	Construction NOC	21	3.1
4	House Connection – Electricity HV Cables	Construction NOC	22	4.1 to 4.3
5	House Connection – Water	Construction NOC	23	-
6	House Connection – Sewerage	Construction NOC	24	-
7	House Connection – Irrigation	Construction NOC	25	-
8	House Connection – District Cooling	Construction NOC	26	-
9	House Connection – Gas	Construction NOC	27	-
10	House Connection – Telecommunication (Etisalat/DU/FO /Police/Military)	Construction NOC	28	-
11	General Projects – Dewatering and Discharge	Construction NOC	29	11.1 to 11.4
12	General Projects – Lagoons	Construction NOC	30	-
13	General Projects – Soil Investigation/ Borehole	Construction NOC	31	13.1 to 13.2
14	General Projects – NDCM (Road/Service Crossing)	Construction NOC	32	14.1 to 14.4
15	General Projects – Open cut (Road/Service Crossing)	Construction NOC	33	15.1 to 15.2
16	General Projects – Building Shoring	Design NOC	34	16.1 to 16.2
		Construction NOC		
17	General Projects – Scaffolding	Construction NOC	35	-
18	General Projects – Utility Manhole/Chamber/Gully	Construction NOC	36	-
19	General Projects – Loading /Unloading Materials /Machineries	Construction NOC	37	-
20	General Projects – Removal of Plants and Trees	Construction NOC	38	-
21	General Projects – Landscape and Plantation	Design NOC	39	21.1 to 21.3
		Construction NOC		
22	General Projects – Sikka Cancellation	Design NOC	40	-
23	General Projects – Area Re-planning	Design NOC	41	-
24	General Projects – Using DEWA Access Road	Construction NOC	42	-



SNO	Project Type	NOC Type	Page No.	Drawing No.
25	General Projects – Working under OHL	Construction NOC	43	-
26	General Projects – Using DEWA Spare Duct	Construction NOC	44	-
27	General Projects – Service Protection	Construction NOC	45	-
28	General Projects – Diversion/Relocation for Electricity services	Design NOC	46	-
		Construction NOC		
29	General Project - Electricity services diversion	Shop drawing Approval	47	-
30	General Projects – Diversion/Relocation for Water services	Design NOC	48	-
		Construction NOC		
31	General Projects – Sea Projects (Work close to seashore)	Design NOC	49	-
		Construction NOC		
32	General Projects – Advertisement Signs	Construction NOC	50	32.1 to 32.3
33	General Projects – Permanent OHL Warning/Headroom Gantry	Construction NOC	51	-
34	General Projects – RTU (Remote Terminal Unit)	Construction NOC	52	-
35	General Projects – Fencing/Site Office	Construction NOC	53	-
36	General Projects – Global System for Mobile (GSM) Tower	Construction NOC	54	-
37	General Projects – Kiosk	Design NOC	55	-
		Construction NOC		
38	General Projects – Camera Installation	Construction NOC	56	-
39	General Projects – Private Owner (Plot/Villa/Farm)	Construction NOC	57	-
40	General Projects – Others	Construction NOC	58	-
41	Network Services – Electricity LV	Design NOC	59	-
		Construction NOC		
42	Network Services – Electricity HV	Design NOC	61	42.1 to 42.20
		Construction NOC		
43	Network Services – Electricity EHV	Design NOC	63	43.1 to 43.7
		Construction NOC		
44	Network Services – Water Distribution	Design NOC	65	-
		Construction NOC		
45	Network Services – Water Transmission	Design NOC	67	-
		Construction NOC		
46	Network Services – Sewerage	Design NOC	69	-
		Construction NOC		



SNO	Project Type	NOC Type	Page No.	Drawing No.
47	Network Services – Storm Water Drainage	Design NOC	71	-
		Construction NOC		
48	Network Services – Irrigation	Design NOC	73	48.1 to 48.3
		Construction NOC		
49	Network Services – District Cooling	Design NOC	75	-
		Construction NOC		
50	Network Services – Gas/Fuel	Design NOC	77	-
		Construction NOC		
51	Network Services – Telecommunication	Design NOC	79	-
		Construction NOC		
52	Network Services – Firefighting (Civil Defense)	Design NOC	81	-
		Construction NOC		
53	Road Projects – RTA Infrastructure	Design NOC	83	-
		Construction NOC		
54	Road Projects – RTA Asphalt & Interlock Work	Design NOC	85	54.1 to 54.23 TPV.1 to TPV.6
		Construction NOC		
55	Road Projects – RTA Asphalt Work	Design NOC	87	-
56	Road Projects – Private Infrastructure	Design NOC	89	-
		Construction NOC		
57	Road Projects – Private Asphalt & Interlock Work	Design NOC	91	-
		Construction NOC		
58	Road Projects – Private Asphalt Work	Design NOC	93	-
		Construction NOC		
59	Road Projects – Interlock Work	Design NOC	95	-
		Construction NOC		
60	Road Projects – RTA Bridges/Interchanges/Ramps/Flyover/Roundabout	Design NOC	97	-
		Construction NOC		
61	Road Projects – Private Bridges/Interchanges/Ramps/Flyover/Roundabout	Design NOC	99	-
		Construction NOC		
62	Road Projects – Service Tunnel.	Design NOC	101	-
		Construction NOC		
63	Road Projects – Railway/Metro/Tram.	Design NOC	103	-
		Construction NOC		
64	Road Projects – Road Maintenance Works.	Construction NOC	105	64.1



SNO	Project Type	NOC Type	Page No.	Drawing No.
65	Road Projects – Future Duct Works.	Shop drawing Approval	106	-
66	Road Projects – Extension / Protection of Ducts.	Shop drawing Approval	107	-
67	Road Project - Electricity services diversion	Shop drawing Approval	108	-
68	Road Projects – Service Protection	Shop drawing Approval	109	-
69	Road Projects – Grading Works.	Construction NOC	110	-
70	Road Projects – Pedestrian Bridge	Design NOC	111	70.1 to 70.4
		Construction NOC		
71	Road Projects – Public Transport Projects (Bus Shelter/Bus Stop/Bus Layby)	Design NOC	113	-
		Construction NOC		
72	Road Projects – Street Lighting	Design NOC	115	-
		Construction NOC		
73	Road Projects – Traffic Signal	Construction NOC	117	-
74	Road Projects – Addressing Signs/Traffic Signs (Ground mounted signs)	Design NOC	118	-
		Construction NOC		
75	Road Projects – Gantry/Cantilever (Traffic/Toll Gate/I.T.S)	Design NOC	120	-
		Construction NOC		
76	Road Projects – Sound Barrier	Construction NOC	122	-
77	Road Projects – Traffic Diversion	Construction NOC	123	-
78	Road Projects – Cycle/Jogging Track	Design NOC	124	-
		Construction NOC		
79	Road Projects – Others	Construction NOC	126	-
80	All	Revalidation NOC	127	-



1	NOC Type	Information NOC
	Project Type	All
S No	Submission Requirements	
1	Key Plan showing the proposed work on Dubai map with North direction.	
2	General Layout Drawing highlighting the location with minimum two DLTM coordinates/Parcel ID.	



2	NOC Type	Trial Pit NOC
	Project Type	All
S No	Submission Requirements	
1	Key Plan showing the proposed work on Dubai map with North direction.	
2	General Layout Drawing highlighting the location with minimum two DLTM coordinates/Parcel ID.	



3	NOC Type	Construction NOC
	Project Type	House Connection – Electricity LV Cables
S No	Submission Requirements	
1	Key plan showing the proposed work on Dubai map with North direction.	
2	General layout plan showing proposed house connection route in DLTM coordinates together with plot number.	
3	Detailed Cross section drawing showing distribution of services corridor along with proposed work as per RTA ROW cross section or Approved master plan for major projects.	



4	NOC Type	Construction NOC
	Project Type	House Connection – Electricity HV Cables
S No	Submission Requirements	
1	Key plan showing the proposed work on Dubai map with North direction.	
2	General layout plan showing proposed house connection route in DLTM coordinates together with plot number.	
3	Detailed Cross section drawing showing distribution of services corridor along with proposed work as per RTA ROW cross section or Approved master plan for major projects.	



5	NOC Type	Construction NOC
	Project Type	House Connection – Water
S No	Submission Requirements	
1	Key plan showing the proposed work on Dubai map with North direction.	
2	General layout plan showing proposed house connection route in DLTM coordinates together with plot number.	
3	Detailed Cross section drawing showing distribution of services corridor along with proposed work as per RTA ROW cross section or Approved master plan for major projects.	



6	NOC Type	Construction NOC
	Project Type	House Connection – Sewerage
S No	Submission Requirements	
1	Key plan showing the proposed work on Dubai map with North direction.	
2	Layout plan showing proposed Sewer house connection route and manholes details (If any) with DLTM coordinates along with superimposed existing Electricity Services (If available).	
3	Layout plan showing proposed Sewer house connection route and manholes details (If any) with DLTM coordinates along with superimposed existing Water Services (If available)	
4	Cross section drawing details with proposed sewer work and Manholes (If any) showing Horizontal / vertical clearance and protection details, with respect to DEWA existing services.	
5	Detailed Cross section drawing showing distribution of services corridor along with proposed work as per RTA ROW cross section or Approved master plan for major projects.	
6	Trial pit /site verification from Transmission Line Maintenance department for 132/400 kV Cable/O.H.L (If applicable).	
7	Trial pit/site verification from Distribution Maintenance department for 6.6/11/33 kV Cable/O.H.L (If applicable).	
8	Trial pit verification from Project consultant/client for DEWA Water services (If applicable).	



7	NOC Type	Construction NOC
	Project Type	House Connection – Irrigation
S No	Submission Requirements	
1	Key plan showing the proposed work on Dubai map with North direction.	
2	Layout plan showing proposed Irrigation house connection route and manholes details (If any) with DLTm coordinates along with superimposed existing Electricity Services (If available)	
3	Layout plan showing proposed Irrigation house connection route and manholes details (If any) with DLTm coordinates along with superimposed DEWA existing Services (If available)	
4	Cross section drawing details with proposed Irrigation work and Manholes (If any) showing Horizontal / vertical clearance and protection details, with respect to existing DEWA services.	
5	Detailed Cross section drawing showing distribution of services corridor along with proposed work as per RTA ROW cross section or Approved master plan for major projects.	
5	Trial pit /site verification from Transmission Line Maintenance department for 132/400 kV Cable/O.H.L (If applicable).	
6	Trial pit/site verification from Distribution Maintenance department for 6.6/11/33 kV Cable/O.H.L (If applicable).	
7	Trial pit verification from Project consultant/client for DEWA Water services (If applicable).	



8	NOC Type	Construction NOC
	Project Type	House Connection – District Cooling
S No	Submission Requirements	
1	Key plan showing the proposed work on Dubai map with North direction.	
2	Layout plan showing proposed District cooling house connection route and manholes details (If any) with DLTm coordinates along with superimposed existing Electricity Services (If available).	
3	Layout plan showing proposed District cooling house connection route and manholes details (If any) with DLTm coordinates along with superimposed existing Water Services (If available).	
4	Cross section drawing details with proposed District Cooling work and Manholes (If any) showing Horizontal / vertical clearance and protection details, with respect to DEWA existing services.	
5	Detailed Cross section drawing showing distribution of services corridor along with proposed work as per RTA ROW cross section or Approved master plan for major projects.	
6	Trial pit /site verification from Transmission Line Maintenance department for 132/400 kV Cable/O.H.L (If applicable).	
7	Trial pit/site verification from Distribution Maintenance department for 6.6/11/33 kV Cable/O.H.L (If applicable).	
8	Trial pit verification from Project consultant/client for DEWA Water services (If applicable).	



9	NOC Type	Construction NOC
	Project Type	House Connection – Gas
S No	Submission Requirements	
1	Key plan showing the proposed work on Dubai map with North direction.	
2	Layout plan showing proposed Gas house connection route and manholes details (If any) with DLTM coordinates along with superimposed existing Electricity Services (If required)	
3	Layout plan showing proposed Gas house connection route and manholes (If any) details with DLTM coordinates along with superimposed existing Water Services(If required)	
4	Cross section drawing details with proposed Gas work and Manholes (If any) showing Horizontal / vertical clearance and protection details, with respect to DEWA existing services.	
5	Detailed Cross section drawing showing distribution of services corridor along with proposed work as per RTA ROW cross section or Approved master plan for major projects.	
6	Trial pit /site verification from Transmission Line Maintenance department for 132/400 kV Cable/O.H.L (If applicable).	
7	Trial pit/site verification from Distribution Maintenance department for 6.6/11/33 kV Cable/O.H.L (If applicable).	
8	Trial pit verification from Project consultant/client for DEWA Water services (If applicable).	



10	NOC Type	Construction NOC
	Project Type	House Connection – Telecommunication (Etisalat/DU/ FO /Police/Military)
S No	Submission Requirements	
1	Key plan showing the proposed work on Dubai map with North direction.	
2	Layout plan showing proposed Telecommunication house connection route and manholes details (If any) with DLTM coordinates along with superimposed existing Electricity Services (If available).	
3	Layout plan showing proposed Telecommunication house connection route and manholes details (If any) with DLTM coordinates along with superimposed existing Water Services (If available).	
4	Cross section drawing details with proposed Telecommunication work and Manholes (If any) showing Horizontal / vertical clearance and protection details, with respect to DEWA existing services.	
5	Detailed Cross section drawing showing distribution of services corridor along with proposed work as per RTA ROW cross section or Approved master plan for major projects.	
6	Trial pit /site verification from Transmission Line Maintenance department for 132/400 kV Cable/O.H.L (If applicable).	
7	Trial pit/site verification from Distribution Maintenance department for 6.6/11/33 kV Cable/O.H.L (If applicable).	
8	Trial pit verification from Project consultant/client for DEWA Water services (If applicable).	



11	NOC Type	Construction NOC
	Project Type	General Projects – Dewatering and Discharge
S No	Submission Requirements	
1	Covering Letter (Ref Annexure 1) .	
2	Key plan showing the proposed work on Dubai map with North direction.	
3	General layout plan showing proposed Dewatering in DLTM coordinates and cross section marker.	
4	Layout plan showing proposed Dewatering drilling location and discharge route details with superimposed existing Electricity Services.	
5	Layout plan showing proposed Dewatering drilling location and discharge route details with superimposed existing Water Services.	
6	Detailed Cross section drawing showing proposed Dewatering and Discharge work with Horizontal / vertical clearance and protection details, with respect to existing DEWA services.	
7	Detailed Cross section drawing showing distribution of services corridor along with proposed work as per RTA ROW cross section or Approved master plan for major projects.	
8	Layout Plan showing the site arrangement for machineries, equipment, materials, and site access route.	
9	Detailed program of proposed work.	
10	Undertaking letter (Ref Annexure 2)	
11	Contractor's emergency contact details.	
12	Detailed Method statement (including protection/crossing of DEWA existing services - If applicable).	
13	Trial pit /site verification from Transmission Line Maintenance department for 132/400 kV Cable/O.H.L (If applicable).	
14	Trial pit/site verification from Distribution Maintenance department for 6.6/11/33 kV Cable/O.H.L (If applicable).	
15	Trial pit verification from Project consultant/client for DEWA Water services (If applicable).	



12	NOC Type	Construction NOC
	Project Type	General Projects – Lagoons
S No	Submission Requirements	
1	Covering Letter (Ref Annexure 1) .	
2	Key plan showing the proposed work on Dubai map with North direction.	
3	General layout plan showing proposed Lagoon in DLTM coordinates and cross section marker.	
4	Layout plan showing proposed Lagoon details including size and depth together with superimposed existing Electricity Services.	
5	Layout plan showing proposed Lagoon details including size and depth together with superimposed existing Water Services.	
6	Detailed Cross section drawing showing proposed Lagoons work with Horizontal / vertical clearance and protection details (If any), with respect to existing DEWA services.	
7	Detailed Cross section drawing showing distribution of services corridor along with proposed work as per RTA ROW cross section or Approved master plan for major projects.	
8	Layout Plan showing the site arrangement for machineries, equipment, materials, and site access route.	
9	Detailed program of proposed work.	
10	Undertaking letter (Ref Annexure 3) .	
11	Contractor's emergency contact details.	
12	Detailed Method statement (including protection of DEWA existing services - If applicable).	
13	Trial pit /site verification from Transmission Line Maintenance department for 132/400 kV Cable/O.H.L (If applicable).	
14	Trial pit/site verification from Distribution Maintenance department for 6.6/11/33 kV Cable/O.H.L (If applicable).	
15	Trial pit verification from Project consultant/client for DEWA Water services (If applicable).	



13	NOC Type	Construction NOC
	Project Type	General Projects – Soil Investigation/ Borehole
S No	Submission Requirements	
1	Covering Letter (Ref Annexure 1).	
2	Key plan showing the proposed work on Dubai map with North direction.	
3	Layout plan showing proposed Soil Investigation/ Borehole details including size, depth together with DLTM coordinates along with superimposed existing Electricity Services.	
4	Layout plan showing proposed Soil Investigation/ Borehole details including size, depth together with DLTM coordinates along with superimposed existing Water Services.	
5	Cross section drawing details for the proposed Soil Investigation/ Borehole showing Horizontal clearance and protection details, with respect to DEWA existing services. (Show the Vertical clearance details, for working within/close to OHL).	
6	Layout Plan showing the site arrangement for machineries, equipment, materials, and site access route.	
7	Detailed program of proposed work.	
8	Contractor's emergency contact details.	
9	Detailed Method statement (including protection of DEWA existing services - If applicable).	
10	Trial pit /site verification from Transmission Line Maintenance department for 132/400 kV Cable/O.H.L (If applicable).	
11	Trial pit/site verification from Distribution Maintenance department for 6.6/11/33 kV Cable/O.H.L (If applicable).	
12	Trial pit verification from Project consultant/client for DEWA Water services (If applicable).	



14	NOC Type	Construction NOC
	Project Type	General Projects – NDCM (Road/Service Crossing)
S No	Submission Requirements	
1	Covering Letter (Ref Annexure 1) together with DEWA reference number of approved route for the Construction NOC.	
2	Key plan showing the proposed work on Dubai map with North direction.	
3	Layout plan showing proposed NDCM details with Entry/Exit pit such as size and depth showing DLTM coordinates along with superimposed existing Electricity Services.	
4	Layout plan showing proposed NDCM details with Entry/Exit pit such as size and depth showing DLTM coordinates along with superimposed existing Water Services.	
5	Detailed Cross section drawing showing proposed NDCM profile including Entry/ Exit Pit details along with Horizontal / vertical clearance and protection details, with respect to existing DEWA services.	
6	Detailed Cross section drawing showing distribution of services corridor along with proposed work as per RTA ROW cross section or Approved master plan for major projects (If applicable).	
7	Layout Plan showing the site arrangement for machineries, equipment, materials, and site access route.	
8	Detailed program of proposed work.	
9	Contractor's emergency contact details.	
10	Detailed Method statement (including protection/crossing of DEWA existing services - If applicable).	
11	Trial pit /site verification from Transmission Line Maintenance department for 132/400 kV Cable/O.H.L (If applicable).	
12	Trial pit/site verification from Distribution Maintenance department for 6.6/11/33 kV Cable/O.H.L (If applicable).	
13	Trial pit verification from Project consultant/client for DEWA Water services (If applicable).	



15	NOC Type	Construction NOC
	Project Type	General Projects – Open cut (Road/Service Crossing)
S No	Submission Requirements	
1	Covering Letter (Ref Annexure 1) together with DEWA reference number of approved route for the Construction NOC.	
2	Key plan showing the proposed work on Dubai map with North direction.	
3	Layout plan showing proposed Open Cut details together with DLTM coordinates along with superimposed existing Electricity Services.	
4	Layout plan showing proposed Open Cut details together with DLTM coordinates along with superimposed existing Water Services.	
5	Detailed Cross section including the proposed Open Cut showing Horizontal / vertical clearance and protection details, with respect to DEWA existing services.	
6	Layout Plan showing the site arrangement for machineries, equipment, materials, and site access route.	
7	Detailed program of proposed work.	
8	Contractor's emergency contact details.	
9	Detailed Method statement (including protection/crossing of DEWA existing services - If applicable).	
10	Trial pit /site verification from Transmission Line Maintenance department for 132/400 kV Cable/O.H.L (If applicable).	
11	Trial pit/site verification from Distribution Maintenance department for 6.6/11/33 kV Cable/O.H.L (If applicable).	
12	Trial pit verification from Project consultant/client for DEWA Water services (If applicable).	

16	NOC Type	Design NOC, Construction NOC
	Project Type	General Projects – Building Shoring
S No	Submission Requirements for Design NOC	
1	Covering Letter (Ref Annexure 1) .	
2	Key plan showing the proposed work on Dubai map with North direction.	
3	General layout plan showing proposed building shoring in DLTM coordinates and cross section marker.	
4	Layout plan showing plot limits and proposed building shoring with anchoring details (if any) together with superimposed existing Electricity Services.	
5	Layout plan showing plot limits and proposed building shoring with anchoring details (if any) together with superimposed existing Water Services.	
6	Detailed Cross section including the plot limits and proposed Shoring showing Horizontal / vertical clearance and protection details, with respect to DEWA existing services.	
7	Copy of Building NOC obtained from DEWA for Electricity and Water. (Ref Business support Contact)	
S No	Submission Requirements for Construction NOC	
1	Covering Letter (Ref Annexure 1).	
2	Key plan showing the proposed work on Dubai map with North direction.	
3	General layout plan showing proposed building shoring in DLTM coordinates and cross section marker.	
4	Layout plan showing plot limits and proposed building shoring with anchoring details (if any) together with superimposed existing Electricity Services.	
5	Layout plan showing plot limits and proposed building shoring with anchoring details (if any) together with superimposed existing Water Services.	
6	Detailed Cross section drawing including the plot limits and proposed Shoring showing Horizontal / vertical clearance and protection details with respect to DEWA existing services.	
7	Copy of Building NOC obtained from DEWA for Electricity and Water. (Ref Business support Contact)	
8	Layout Plan showing the site arrangement for machineries, equipment, materials, and site access route.	
9	Detailed program of proposed work.	
10	Contractor's emergency contact details.	
11	Detailed Method statement (including protection of DEWA existing services - If applicable).	
12	Undertaking letter from the client to remove the Beams/Anchors as and when required (Ref Annexure 4) .	
13	Trial pit /site verification from Transmission Line Maintenance department for 132/400 kV Cable/O.H.L (If applicable).	
14	Trial pit/site verification from Distribution Maintenance department for 6.6/11/33 kV Cable/O.H.L (If applicable).	
15	Trial pit verification from Project consultant/client for DEWA Water services (If applicable).	



17	NOC Type	Construction NOC
	Project Type	General Projects – Scaffolding
S No	Submission Requirements	
1	Covering Letter (Ref Annexure 1) .	
2	Key plan showing the proposed work on Dubai map with North direction.	
3	Layout plan showing proposed scaffolding details with DLTM coordinates along with superimposed existing Electricity Services.	
4	Layout plan showing proposed scaffolding details with DLTM coordinates along with superimposed existing Water Services.	
5	Detailed Cross section drawing showing proposed scaffolding work with Horizontal / vertical clearance and protection details, with respect to existing DEWA services.	
6	Detailed Cross section drawing showing distribution of services corridor along with proposed work as per RTA ROW cross section or Approved master plan for major projects.	
7	Layout Plan showing the site arrangement for machineries, equipment, materials, and site access route.	
8	Detailed program of proposed work.	
9	Undertaking letter (Ref Annexure 5) for the Scaffolding over DEWA Services/Corridor. (If Applicable)	
10	Contractor's emergency contact details.	
11	Detailed Method statement (including protection/crossing of DEWA existing Services – If applicable)	
12	Site verification from Transmission Line Maintenance department for 132/400 kV Cable/O.H.L (If applicable).	
13	Trial pit/site verification from Distribution Maintenance department for 6.6/11/33 kV Cable/O.H.L (If applicable).	
14	Trial pit verification from Project consultant/client for DEWA Water services (If applicable).	



18	NOC Type	Construction NOC
	Project Type	General Projects – Utility Manhole/Chamber/Gully
S No	Submission Requirements	
1	Covering Letter (Ref Annexure 1) with DEWA reference number of approved route Construction NOC –If applicable.	
2	Key plan showing the proposed work on Dubai map with North direction.	
3	Layout plan showing proposed work details including structural details together with DLTM coordinates along with superimposed existing Electricity Services.	
4	Layout plan showing proposed work details including structural details together with DLTM coordinates along with superimposed existing Water Services.	
5	Detailed Cross section drawing showing proposed work with Horizontal / vertical clearance and protection details, with respect to existing DEWA services.	
6	Detailed Cross section drawing showing distribution of services corridor along with proposed work as per RTA ROW cross section or Approved master plan for major projects.	
7	Layout Plan showing the site arrangement for machineries, equipment, materials, and site access route.	
8	Detailed program of proposed work.	
9	Contractor's emergency contact details.	
10	Detailed Method statement (including protection/crossing of DEWA existing services - If applicable).	
11	Trial pit /site verification from Transmission Line Maintenance department for 132/400 kV Cable/O.H.L (If applicable).	
12	Trial pit/site verification from Distribution Maintenance department for 6.6/11/33 kV Cable/O.H.L (If applicable).	
13	Trial pit verification from Project consultant/client for DEWA Water services (If applicable).	

19	NOC Type	Construction NOC
	Project Type	General Projects – Loading /Unloading Materials /Machineries
S No	Submission Requirements	
1	Covering Letter (Ref Annexure 1) .	
2	Key plan showing the proposed work on Dubai map with North direction.	
3	Layout plan showing proposed work details together with DLTM coordinates along with superimposed existing Electricity Services.	
4	Layout plan showing proposed work details together with DLTM coordinates along with superimposed existing Water Services.	
5	Detailed Cross section drawing showing proposed work with Horizontal / vertical clearance and protection details, with respect to existing DEWA services.	
6	Detailed Cross section drawing showing distribution of services corridor along with proposed work as per RTA ROW cross section or Approved master plan for major projects.	
7	Layout Plan showing the site arrangement for machineries, equipment, materials, and site access route.	
8	Detailed program of proposed work.	
9	Contractor's emergency contact details.	
10	Detailed Method statement (including protection/crossing of DEWA existing services - If applicable).	
11	Trial pit /site verification from Transmission Line Maintenance department for 132/400 kV Cable/O.H.L (If applicable).	
12	Trial pit/site verification from Distribution Maintenance department for 6.6/11/33 kV Cable/O.H.L (If applicable).	
13	Trial pit verification from Project consultant/client for DEWA Water services (If applicable).	



20	NOC Type	Construction NOC
	Project Type	General Projects – Removal of Plants and Trees
S No	Submission Requirements	
1	Covering Letter (Ref Annexure 1).	
2	Key plan showing the proposed work on Dubai map with North direction.	
3	Layout plan showing proposed work details together with DLTM coordinates along with superimposed existing Electricity Services.	
4	Layout plan showing proposed work details together with DLTM coordinates along with superimposed existing Water Services.	
5	Detailed Cross section drawing showing proposed work with Horizontal / vertical clearance and protection details, with respect to existing DEWA services.	
6	Layout Plan showing the site arrangement for machineries, equipment, materials, and site access route.	
7	Detailed program of proposed work.	
8	Contractor's emergency contact details.	
9	Detailed Method statement for the Removal of Plants (Roots/Trunks) and Trees (including protection/crossing of DEWA existing services - If applicable).	



21	NOC Type	Design NOC, Construction NOC
	Project Type	General Projects – Landscape and Plantation
S No	Submission Requirements for Design NOC	
1	Covering Letter (Ref Annexure 1).	
2	Key plan showing the proposed work on Dubai map with North direction.	
3	General layout plan showing proposed landscaping and plantation work in DLTM coordinates and cross section marker.	
4	Layout plan showing proposed landscaping and plantation work details with proper legends for each item together with superimposed existing Electricity Services.	
5	Layout plan showing proposed landscaping and plantation work details with proper legends for each item together with superimposed existing Water Services.	
6	Detailed Cross section showing proposed landscaping and plantation works showing the profile with cut/fill, with respect to existing DEWA services.	
7	Detailed Cross section drawing showing distribution of services corridor along with proposed work as per RTA ROW cross section or Approved master plan for major projects.	
S No	Submission Requirements for Construction NOC	
1	Covering Letter (Ref Annexure 1) with DEWA reference number of approved Final Design NOC (If Applicable).	
2	Key plan showing the proposed work on Dubai map with North direction.	
3	General layout plan showing proposed landscaping and plantation work in DLTM coordinates and cross section marker.	
4	Layout plan showing proposed landscaping and plantation work details with proper legends for each item together with superimposed existing Electricity Services.	
5	Layout plan showing proposed landscaping and plantation work details with proper legends for each item together with superimposed existing Water Services.	
6	Detailed Cross section showing proposed landscaping and plantation works including cut/fill of the ground level with Horizontal / vertical clearance and protection details, with respect to existing DEWA services.	
7	Detailed Cross section drawing showing distribution of services corridor along with proposed work as per RTA ROW cross section or Approved master plan for major projects.	
8	Undertaking letter (Applicable if the proposal above/adjacent to DEWA Services/Corridor) (Ref Annexure 6)	
9	Layout Plan showing the site arrangement for machineries, equipment, materials, and site access route.	
10	Detailed program of proposed work.	
11	Contractor's emergency contact details.	
12	Detailed Method statement (including protection/crossing of DEWA existing services - If applicable).	
13	Trial pit /site verification from Transmission Line Maintenance department for 132/400 kV Cable/O.H.L (If applicable).	
14	Trial pit/site verification from Distribution Maintenance department for 6.6/11/33 kV Cable/O.H.L (If applicable).	
15	Trial pit verification from Project consultant/client for DEWA Water services (If applicable).	



22	NOC Type	Design NOC
	Project Type	General Projects – Sikka Cancellation
S No	Submission Requirements	
1	Covering Letter (Ref Annexure 1).	
2	Affection plan.	
3	Copy of estimation approval (If applicable)	
Note: In case existing DEWA services are to be relocated at the site, then the client has to obtain the estimation approval for relocation of DEWA services from the concern department.		

23	NOC Type	Design NOC
	Project Type	General Projects – Area Re-planning
S No	Submission Requirements	
1	Covering Letter (Ref Annexure 1) .	
2	Key plan showing the proposed work on Dubai map with North direction.	
3	General layout plan showing proposed Area Re-planning work in DLTM coordinates and cross section marker.	
4	Layout plan showing the proposed diversion/relocation of existing Electricity services due to Area replanning (If any) with superimposed existing Electricity Services.	
5	Layout plan showing the proposed diversion/relocation of existing Water services due to Area re-planning (If any) with superimposed existing Water Services.	
6	Detailed Cross section showing the proposed works including the diversion/relocation of DEWA services (If any) with Horizontal / vertical clearance and protection details, with respect to existing DEWA services (If Applicable)	
7	Detailed Cross section drawing showing distribution of services corridor along with proposed work as per RTA ROW cross section or Approved master plan for major projects. (If Applicable)	
8	Copy of approved master plan for developers project (If applicable)	



24	NOC Type	Construction NOC
	Project Type	General Projects – Using DEWA Access Road
S No	Submission Requirements	
1	Covering Letter (Ref Annexure 1).	
2	Key plan showing the proposed work on Dubai map with North direction.	
3	Layout plan showing proposed proposed site access route and site arrangements details with DLTM coordinates along with superimposed existing Electricity Services.	
4	Layout plan showing proposed proposed site access route and site arrangements details with DLTM coordinates along with superimposed existing Water Services.	
5	Detailed Program of proposed work	
6	Contractor's emergency contact details.	
7	Detailed Method statement (including protection/crossing of DEWA existing services - If applicable).	
8	Trial pit /site verification from Transmission Line Maintenance department for 132/400 kV Cable/O.H.L (If applicable).	
9	Trial pit/site verification from Distribution Maintenance department for 6.6/11/33 kV Cable/O.H.L (If applicable).	
10	Trial pit verification from Project consultant/client for DEWA Water services (If applicable).	



25	NOC Type	Construction NOC
	Project Type	General Projects – Working under OHL
S No	Submission Requirements	
1	Covering Letter (Ref Annexure 1) .	
2	Key plan showing the proposed work on Dubai map with North direction.	
3	Layout plan showing proposed work details in DLTM coordinates along with superimposed existing Electricity Services.	
4	Layout plan showing proposed work details in DLTM coordinates along with superimposed existing Water Services.	
5	Detailed Cross section together with proposed works including the Crossing/Protection of DEWA services showing Horizontal / vertical clearance and protection details with respect to existing DEWA services	
6	Layout Plan showing the site arrangement for machineries, equipment, materials, and site access route.	
7	Detailed Program of proposed work.	
8	Contractor's emergency contact details.	
9	Detailed Method statement (including protection/crossing of DEWA existing services - If applicable).	
10	Site verification from Transmission Line Maintenance department for 132/400 kV Cable/O.H.L.	
11	Site verification from Distribution Maintenance department for 6.6/11/33 kV Cable/O.H.L.	
12	Undertaking letter (Ref Annexure 7)	



26	NOC Type	Construction NOC
	Project Type	General Projects – Using DEWA Spare Duct
S No	Submission Requirements	
1	Covering Letter (Ref Annexure 1) indicating the duration for temporary usage together with DEWA reference number of approved Project/Route Construction NOC.	
2	Key plan showing the proposed work on Dubai map with North direction.	
3	General layout plan showing proposed work and existing duct details in DLTM coordinates.	
4	Detailed Cross section together with proposed works including the Crossing/Protection of DEWA services showing Horizontal / vertical clearance and protection details with respect to existing DEWA services (If Applicable).	
5	Detailed Program of proposed work.	
6	Contractor's emergency contact details.	
7	Detailed Method statement (including protection/crossing of DEWA existing services - If applicable).	
8	Trial pit /site verification from Transmission Line Maintenance department for 132/400 kV Cable/O.H.L (If applicable).	
9	Trial pit/site verification from Distribution Maintenance department for 6.6/11/33 kV Cable/O.H.L (If applicable).	
10	Trial pit verification from Project consultant/client for DEWA Water services (If applicable).	



27	NOC Type	Construction NOC
	Project Type	General Projects – Service Protection
S No	Submission Requirements	
1	Covering Letter (Ref Annexure 1) together with DEWA reference number of approved Project/Route Construction NOC.	
2	Key plan showing the proposed work on Dubai map with North direction.	
3	General layout plan showing proposed work in DLTM coordinates and cross section marker.	
4	Detailed Cross section together with proposed works including the Protection of DEWA services showing Horizontal / vertical clearance and protection details with respect to existing DEWA services.	
5	Layout Plan showing the site arrangement for machineries, equipment, materials, and site access route.	
6	Detailed Program of proposed work.	
7	Contractor's emergency contact details.	
8	Detailed Method statement (including protection/crossing of DEWA existing services - If applicable).	
9	Trial pit /site verification from Transmission Line Maintenance department for 132/400 kV Cable/O.H.L (If applicable).	
10	Trial pit/site verification from Distribution Maintenance department for 6.6/11/33 kV Cable/O.H.L (If applicable).	
11	Trial pit verification from Project consultant/client for DEWA Water services (If applicable).	



28	NOC Type	Design NOC, Construction NOC
	Project Type	General Projects – Diversion/Relocation for Electricity services
S No	Submission Requirements for Design NOC	
1	Covering Letter (Ref Annexure 1) addressing the necessity of Diversion/Relocation.	
2	Key plan showing the proposed work on Dubai map with North direction.	
3	General layout plan showing proposed Diversion/Relocation for Electricity services in DLTM coordinates and cross section marker.	
4	Layout plan showing proposed Diversion/Relocation for Electricity services in the proper corridor with superimposed existing Electricity Services.	
5	Layout plan showing proposed Diversion/Relocation for Electricity services in the proper corridor with superimposed existing Water Services.	
6	Detailed Cross section with proposed works showing Horizontal / vertical clearance and protection details, with respect to existing DEWA services.	
7	Detailed Cross section drawing showing distribution of services corridor along with proposed work as per RTA ROW cross section or Approved master plan for major projects.	
S No	Submission Requirements for Construction NOC	
1	Covering Letter (Ref Annexure 1) addressing the necessity of Diversion/Relocation together with DEWA reference number of approved Final Design NOC (If applicable).	
2	Key plan showing the proposed work on Dubai map with North direction.	
3	General layout plan showing proposed Diversion/Relocation for Electricity services in DLTM coordinates and cross section marker.	
4	Layout plan showing proposed Diversion/Relocation for Electricity services in the proper corridor with superimposed existing Electricity Services.	
5	Layout plan showing proposed Diversion/Relocation for Electricity services in the proper corridor with superimposed existing Water Services.	
6	Detailed Cross section with proposed works showing Horizontal / vertical clearance and protection details, with respect to existing DEWA services.	
7	Detailed Cross section drawing showing distribution of services corridor along with proposed work as per RTA ROW cross section or Approved master plan for major projects.	
8	Layout Plan showing the site arrangement for machineries, equipment, materials, and site access route.	
9	Detailed Program of proposed work.	
10	Contractor's emergency contact details.	
11	Detailed Method statement (including protection/crossing of DEWA existing services - If applicable).	
12	Trial pit /site verification from Transmission Line Maintenance department for 132/400 kV Cable/O.H.L (If applicable).	
13	Trial pit/site verification from Distribution Maintenance department for 6.6/11/33 kV Cable/O.H.L (If applicable).	
14	Trial pit verification from Project consultant/client for DEWA Water services (If applicable).	



29	NOC Type	Shop drawing Approval
	Project Type	General Project - Electricity services diversion
S No	Submission Requirements	
1	Covering Letter (Ref Annexure 1) together with DEWA reference number of approved Construction NOC -If applicable.	
2	Detailed layout plan showing proposed cable diversion work in DLTM coordinates with type of cable and its length along with type of joint and number of joints.	
3	Detailed Cross section together with proposed cable Diversion work showing Horizontal / vertical clearance and protection details, with respect to existing DEWA services.	
4	Detailed Cross section drawing showing distribution of services corridor along with proposed work as per RTA ROW cross section or Approved master plan for major projects.	
5	Method statement for cable diversion work.	
6	Detailed Program of proposed work.	
7	Existing Transmission cable circuit names, cable joint/link box location with coordinates, along with clearance between the existing and proposed cable joint locations including verification by TLP staff.	

30	NOC Type	Design NOC, Construction NOC
	Project Type	General Projects – Diversion/Relocation for Water services
S No	Submission Requirements for Design NOC	
1	Covering Letter (Ref Annexure 1) addressing the necessity of Diversion/Relocation.	
2	Key plan showing the proposed work on Dubai map with North direction.	
3	General layout plan showing proposed Diversion/Relocation for Water services in DLTM coordinates and cross section marker.	
4	Layout plan showing proposed Diversion/Relocation for Water services in the proper corridor with superimposed existing Electricity Services	
5	Layout plan showing proposed Diversion/Relocation for Water services in the proper corridor with superimposed existing Water Services	
6	Detailed Cross section with proposed works showing Horizontal / vertical clearance and protection details, with respect to existing DEWA services.	
7	Detailed Cross section drawing showing distribution of services corridor along with proposed work as per RTA ROW cross section or Approved master plan for major projects.	
S No	Submission Requirements for Construction NOC	
1	Covering Letter (Ref Annexure 1) addressing the necessity of Diversion/Relocation together with DEWA reference number of approved Final Design NOC (If applicable).	
2	Key plan showing the proposed work on Dubai map with North direction.	
3	General layout plan showing proposed Diversion/Relocation for Water services in DLTM coordinates and cross section marker.	
4	Layout plan showing proposed Diversion/Relocation for Water services in the proper corridor with superimposed existing Electricity Services	
5	Layout plan showing proposed Diversion/Relocation for Water services in the proper corridor with superimposed existing Water Services	
6	Detailed Cross section with proposed works showing Horizontal / vertical clearance and protection details, with respect to existing DEWA services.	
7	Detailed Cross section drawing showing distribution of services corridor along with proposed work as per RTA ROW cross section or Approved master plan for major projects.	
8	Layout Plan showing the site arrangement for machineries, equipment, materials, and site access route.	
9	Detailed Program of proposed work.	
10	Contractor's emergency contact details.	
11	Detailed Method statement (including protection/crossing of DEWA existing services - If applicable).	
12	Trial pit /site verification from Transmission Line Maintenance department for 132/400 kV Cable/O.H.L (If applicable).	
13	Trial pit/site verification from Distribution Maintenance department for 6.6/11/33 kV Cable/O.H.L (If applicable).	
14	Trial pit verification from Project consultant/client for DEWA Water services (If applicable).	



31	NOC Type	Design NOC, Construction NOC
	Project Type	General Projects – Sea Projects (Work close to seashore)
S No	Submission Requirements for Design NOC	
1	Covering Letter (Ref Annexure 1) .	
2	Key plan showing the proposed work on Dubai map with North direction.	
3	General layout plan showing proposed work in DLTM coordinates and cross section marker.	
4	Layout plan showing proposed work details with superimposed existing Electricity Services.	
5	Layout plan showing proposed work details with superimposed existing Water Services.	
6	Detailed Cross section together with proposed work showing Horizontal / vertical clearance and protection details, with respect to existing DEWA Services.	
S No	Submission Requirements for Construction NOC	
1	Covering Letter (Ref Annexure 1) together with DEWA reference number of approved Final Design NOC (If applicable).	
2	Key plan showing the proposed work on Dubai map with North direction.	
3	General layout plan showing proposed work along in DLTM coordinates and cross section marker.	
4	Layout plan showing proposed work details with superimposed existing Electricity Services.	
5	Layout plan showing proposed work details with superimposed existing Water Services.	
6	Detailed Cross section together with proposed work showing Horizontal / vertical clearance and protection details, with respect to and existing DEWA Services. (If Applicable)	
7	Layout Plan showing the site arrangement for machineries, equipment, materials, and site access route.	
8	Detailed Program of proposed work.	
9	Contractor's emergency contact details.	
10	Detailed Method statement (including protection/crossing of DEWA existing services - If applicable).	
11	Trial pit /site verification from Transmission Line Maintenance department for 132/400 kV Cable/O.H.L (If applicable).	
12	Trial pit/site verification from Distribution Maintenance department for 6.6/11/33 kV Cable/O.H.L (If applicable).	
13	Trial pit verification from Project consultant/client for DEWA Water services (If applicable).	

32	NOC Type	Construction NOC
	Project Type	General Projects – Advertisement Signs
S No	Submission Requirements	
1	Covering Letter (Ref Annexure 1).	
2	Key plan showing the proposed work on Dubai map with North direction.	
3	Layout plan showing proposed Advertisement Sign(s) Details in DLTM coordinates with superimposed existing Electricity Services.	
4	Layout plan showing proposed Advertisement Sign(s) Details in DLTM coordinates with superimposed existing Water Services.	
5	Foundation details of the proposed Advertisement Signs.	
6	Detailed Cross section with proposed Advertisement Signs showing Horizontal / vertical clearance and protection details, with respect to existing DEWA services.	
7	Detailed Cross section drawing showing distribution of services corridor along with proposed work as per RTA ROW cross section or Approved master plan for major projects.	
8	Layout Plan showing the site arrangement for machineries, equipment, materials, and site access route.	
9	Detailed Program of proposed work.	
10	Contractor's emergency contact details.	
11	Detailed Method statement (including protection/crossing of DEWA existing services - If applicable).	
12	Trial pit /site verification from Transmission Line Maintenance department for 132/400 kV Cable/O.H.L (If applicable).	
13	Trial pit/site verification from Distribution Maintenance department for 6.6/11/33 kV Cable/O.H.L (If applicable).	
14	Trial pit verification from Project consultant/client for DEWA Water services (If applicable).	

33	NOC Type	Construction NOC
	Project Type	General Projects – Permanent OHL Warning/Headroom Gantry
S No	Submission Requirements	
1	Covering Letter (Ref Annexure 1).	
2	Key plan showing the proposed work on Dubai map with North direction.	
3	Foundation details of the proposed OHL Warning/Headroom Gantry.	
4	Layout plan showing proposed OHL Warning/Headroom Gantry details in DLTM coordinates with superimposed existing Electricity Services.	
5	Layout plan showing proposed OHL Warning/Headroom Gantry details in DLTM coordinates with superimposed existing Water Services.	
6	Detailed Cross section with proposed OHL Warning/Headroom Gantry showing Horizontal / vertical clearance and protection details, with respect to existing DEWA services.	
7	Detailed Cross section drawing showing distribution of services corridor along with proposed work as per RTA ROW cross section or Approved master plan for major projects.	
8	Layout Plan showing the site arrangement for machineries, equipment, materials, and site access route.	
9	Detailed Program of proposed work.	
10	Contractor's emergency contact details.	
11	Detailed Method statement (including protection/crossing of DEWA existing services - If applicable).	
12	Trial pit /site verification from Transmission Line Maintenance department for 132/400 kV Cable/O.H.L (If applicable).	
13	Trial pit/site verification from Distribution Maintenance department for 6.6/11/33 kV Cable/O.H.L (If applicable).	
14	Trial pit verification from Project consultant/client for DEWA Water services (If applicable).	



34	NOC Type	Construction NOC
	Project Type	General Projects – RTU (Remote Terminal Unit)
S No	Submission Requirements	
1	Covering Letter (Ref Annexure 1).	
2	Key plan showing the proposed work on Dubai map with North direction.	
3	Layout plan showing proposed RTU details in DLTM coordinates with superimposed existing Electricity Services.	
4	Layout plan showing proposed RTU details in DLTM coordinates with superimposed existing Water Services.	
5	Foundation details of the proposed RTU.	
6	Detailed Cross section with proposed RTU showing Horizontal / vertical clearance and protection details, with respect to existing DEWA services.	
7	Detailed Cross section drawing showing distribution of services corridor along with proposed work as per RTA ROW cross section or Approved master plan for major projects.	
8	Cross Section drawing details showing corridor widths along with exact location of the proposed RTU as per RTA ROW cross section or Approved Master Plan for Major projects.	
9	Layout Plan showing the site arrangement for machineries, equipment, materials, and site access route.	
10	Detailed program of proposed work	
11	Contractor's emergency contact details.	
12	Detailed Method statement (including protection/crossing of DEWA existing services - If applicable).	

35	NOC Type	Construction NOC
	Project Type	General Projects – Fencing/Site office
S No	Submission Requirements	
1	Covering Letter (Ref Annexure 1) .	
2	Key plan showing the proposed work on Dubai map with North direction.	
3	General layout plan showing proposed Fencing/Site office in DLTM coordinates and cross section marker.	
4	Foundation details of the proposed Fencing/Site office.	
5	Layout plan showing proposed Fencing/Site office details with superimposed existing Electricity Services.	
6	Layout plan showing proposed Fencing/Site office details with superimposed existing Water Services.	
7	Detailed Cross section with proposed Fencing/Site office showing Horizontal / vertical clearance and protection details, with respect to existing DEWA services.	
8	Detailed Cross section drawing showing distribution of services corridor along with proposed work as per RTA ROW cross section or Approved master plan for major projects.	
9	Layout Plan showing the site arrangement for machineries, equipment, materials, and site access route.	
10	Detailed Program of proposed work.	
11	Contractor's emergency contact details.	
12	Detailed Method statement (including protection/crossing of DEWA existing services - If applicable).	
13	Undertaking letter (Ref Annexure 8) .	
14	Trial pit /site verification from Transmission Line Maintenance department for 132/400 kV Cable/O.H.L (If applicable).	
15	Trial pit/site verification from Distribution Maintenance department for 6.6/11/33 kV Cable/O.H.L (If applicable).	
16	Trial pit verification from Project consultant/client for DEWA Water services (If applicable).	

36	NOC Type	Construction NOC
	Project Type	General Projects – Global System for Mobile (GSM) Tower
S No	Submission Requirements	
1	Covering Letter (Ref Annexure 1).	
2	Key plan showing the proposed work on Dubai map with North direction.	
3	General layout plan showing proposed GSM Tower in DLTM coordinates and cross section marker.	
4	GSM Tower foundation details.	
5	Layout plan showing proposed GSM Tower details with superimposed existing Electricity Services.	
6	Layout plan showing proposed GSM Tower details with superimposed existing Water Services.	
7	Detailed Cross section with proposed GSM Tower showing Horizontal / vertical clearance and protection details, with respect to existing DEWA services.	
8	Detailed Cross section drawing showing distribution of services corridor along with proposed work as per RTA ROW cross section or Approved master plan for major projects.	
9	Layout Plan showing the site arrangement for machineries, equipment, materials, and site access route.	
10	Detailed Program of proposed work.	
11	Contractor's emergency contact details.	
12	Detailed Method statement (including protection/crossing of DEWA existing services - If applicable).	
13	Trial pit /site verification from Transmission Line Maintenance department for 132/400 kV Cable/O.H.L (If applicable).	
14	Trial pit/site verification from Distribution Maintenance department for 6.6/11/33 kV Cable/O.H.L (If applicable).	
15	Trial pit verification from Project consultant/client for DEWA Water services (If applicable).	



37	NOC Type	Design NOC, Construction NOC
	Project Type	General Projects – Kiosk
S No	Submission Requirements for Design NOC	
1	Covering Letter (Ref Annexure 1).	
2	Key plan showing the proposed work on Dubai map with North direction.	
3	Layout plan showing proposed Kiosk details in DLTM coordinates with superimposed existing Electricity Services.	
4	Layout plan showing proposed Kiosk details in DLTM coordinates with superimposed existing Water Services.	
5	Kiosk foundation details.	
6	Detailed Cross section with proposed Kiosk showing Horizontal / vertical clearance and protection details, with respect to existing DEWA services.	
7	Detailed Cross section drawing showing distribution of services corridor along with proposed work as per RTA ROW cross section or Approved master plan for major projects.	
S No	Submission Requirements for Construction NOC	
1	Covering Letter (Ref Annexure 1) together with DEWA reference number of approved Final Design NOC (If applicable).	
2	Key plan showing the proposed work on Dubai map with North direction.	
3	Layout plan showing proposed Kiosk details in DLTM coordinates with superimposed existing Electricity Services.	
4	Layout plan showing proposed Kiosk details in DLTM coordinates with superimposed existing Water Services.	
5	Kiosk foundation details.	
6	Layout plan showing proposed Kiosk details with superimposed existing Electricity Services.	
7	Layout plan showing proposed Kiosk details with superimposed existing Water Services.	
8	Detailed Cross section with proposed Kiosk showing Horizontal / vertical clearance and protection details, with respect to existing DEWA services.	
9	Detailed Cross section drawing showing distribution of services corridor along with proposed work as per RTA ROW cross section or Approved master plan for major projects.	
10	Layout Plan showing the site arrangement for machineries, equipment, materials, and site access route.	
11	Detailed Program of Proposed work.	
12	Contractor's emergency contact details.	
13	Detailed Method statement (including protection/crossing of DEWA existing services - If applicable).	
14	Trial pit /site verification from Transmission Line Maintenance department for 132/400 kV Cable/O.H.L (If applicable).	
15	Trial pit/site verification from Distribution Maintenance department for 6.6/11/33 kV Cable/O.H.L (If applicable).	
16	Trial pit verification from Project consultant/client for DEWA Water services (If applicable).	



38	NOC Type	Construction NOC
	Project Type	General Projects – Camera Installation
S No	Submission Requirements	
1	Covering Letter (Ref Annexure 1).	
2	Key plan showing the proposed work on Dubai map with North direction.	
3	Layout layout plan showing proposed Camera details in DLTM coordinates with superimposed existing Electricity Services.	
4	Layout layout plan showing proposed Camera details in DLTM coordinates with superimposed existing Water Services.	
5	Camera Foundation details.	
6	Detailed Cross section with proposed Camera showing Horizontal / vertical clearance and protection details, with respect to existing DEWA services.	
7	Detailed Cross section drawing showing distribution of services corridor along with proposed work as per RTA ROW cross section or Approved master plan for major projects.	
8	Layout Plan showing the site arrangement for machineries, equipment, materials, and site access route.	
9	Detailed Program of Proposed work.	
10	Contractor's emergency contact details.	
11	Detailed Method statement (including protection/crossing of DEWA existing services - If applicable).	
12	Trial pit /site verification from Transmission Line Maintenance department for 132/400 kV Cable/O.H.L (If applicable).	
13	Trial pit/site verification from Distribution Maintenance department for 6.6/11/33 kV Cable/O.H.L (If applicable).	
14	Trial pit verification from Project consultant/client for DEWA Water services (If applicable).	



39	NOC Type	Construction NOC
	Project Type	General Projects – Private Owner (Plot/Villa/Farm)
S No	Submission Requirements	
1	Covering Letter (Ref Annexure 1).	
2	Affection plan.	
Note: This NOC type for private/Individual plot owners who seek DEWA’s approval for the modification works to their properties. (Client only can submit this type of NOC request)		



40	NOC Type	Construction NOC
	Project Type	General Projects – Others
S No	Submission Requirements	
1	Covering Letter (Ref Annexure 1) .	
2	Key plan showing the proposed work on Dubai map with North direction.	
3	General layout plan showing proposed work in DLTM coordinates.	
4	Layout plan showing proposed work details with superimposed existing Electricity Services.	
5	Layout plan showing proposed work details with superimposed existing Water Services.	
6	Detailed Cross section with proposed Work showing Horizontal / vertical clearance and protection details, with respect to existing DEWA services.	
7	Detailed Cross section drawing showing distribution of services corridor along with proposed work as per RTA ROW cross section or Approved master plan for major projects.	
8	Layout Plan showing the site arrangement for machineries, equipment, materials, and site access route.	
9	Detailed program of proposed work.	
10	Contractor's emergency contact details.	
11	Detailed Method statement (including protection/crossing of DEWA existing services - If applicable).	
12	Trial pit /site verification from Transmission Line Maintenance department for 132/400 kV Cable/O.H.L (If applicable).	
13	Trial pit/site verification from Distribution Maintenance department for 6.6/11/33 kV Cable/O.H.L (If applicable).	
14	Trial pit verification from Project consultant/client for DEWA Water services (If applicable).	



41	NOC Type	Design NOC, Construction NOC
	Project Type	Network Services – Electricity LV
S No	Submission Requirements for Design NOC	
1	Covering Letter (Ref Annexure 1).	
2	Key plan showing the proposed work on Dubai map with North direction.	
3	General layout plan showing proposed LV Network in DLTM coordinates with exact limit of the work.	
4	Layout plan showing proposed LV Network details with superimposed existing Electricity Services.	
5	Layout plan showing proposed LV Network details with superimposed existing Water Services.	
6	General cross section layout marker plan showing the location of the cross section markers and limits of each cross-section covering area.	
7	Detailed Cross section with proposed Work showing Horizontal / vertical clearance and protection details, with respect to existing DEWA services.	
8	Cross Section drawing details showing distribution of services corridor as per RTA ROW cross section or Approved Master Plan for Major projects: 1. Typical / Applicable cross section 2. Existing / As built Road Condition 3. Proposed LV Cable with respect to DEWA existing Services /Corridors	
9	Copy of Estimation and job order approval. (Ref Business support Contact list)	
S No	Submission Requirements for Construction NOC	
1	Covering Letter (Ref Annexure 1) together with DEWA reference number of approved Final Design NOC (If applicable).	
2	Key plan showing the proposed work on Dubai map with North direction.	
3	General layout plan showing proposed LV Network in DLTM coordinates with exact limit of the work.	
4	Layout plan showing proposed LV Network details with superimposed existing Electricity Services.	
5	Layout plan showing proposed LV Network details with superimposed existing Water Services.	
6	General cross section layout marker plan showing the location of the cross section markers and limit of each cross-section covering area.	
7	Detailed Cross section with proposed Work showing Horizontal / vertical clearance and protection details, with respect to existing DEWA services.	
8	Cross Section drawing details showing distribution of services corridor as per RTA ROW cross section or Approved Master Plan for Major projects: 1. Typical / Applicable cross section 2. Existing / As built Road Condition 3. Proposed LV Cable with respect to DEWA existing Services /Corridors	
9	Copy of Estimation and job order approval. (Ref Business support Contact list)	
10	Layout Plan showing the site arrangement for machineries, equipment, materials, and site access route.	
11	Detailed program of proposed work	
12	Contractor's emergency contact details.	

S No	Submission Requirements for Construction NOC
13	Detailed Method statement (including protection/crossing of DEWA existing services - If applicable).
14	Trial pit /site verification from Transmission Line Maintenance department for 132/400 kV Cable/O.H.L (If applicable).
15	Trial pit/site verification from Distribution Maintenance department for 6.6/11/33 kV Cable/O.H.L (If applicable).
16	Trial pit verification from Project consultant/client for DEWA Water services (If applicable).
Note: Obtain Estimation and job order approval from Power NOC & Estimation section in connection services department prior to submit Final Design NOC.	

42	NOC Type	Design NOC, Construction NOC
	Project Type	Network Services – Electricity HV
S No	Submission Requirements for Design NOC	
1	Covering Letter (Ref Annexure 1).	
2	Key plan showing the proposed work on Dubai map with North direction.	
3	General layout plan showing proposed HV Network in DLTM coordinates with exact limit of the work.	
4	Layout plan showing proposed HV Network details with superimposed existing Electricity Services.	
5	Layout plan showing proposed HV Network details with superimposed existing Water Services.	
6	General cross section layout marker plan showing the location of the cross section markers and limit of each cross-section covering area.	
7	Detailed Cross section with proposed Work showing Horizontal / vertical clearance and protection details, with respect to existing DEWA services.	
8	Cross Section drawing details showing distribution of services corridor as per RTA ROW cross section or Approved Master Plan for Major projects <ul style="list-style-type: none"> 1. Typical / Applicable cross section 2. Existing / As built Road Condition 3. Proposed HV Cable with respect to DEWA existing Services /Corridors. 	
S No	Submission Requirements for Construction NOC	
1	Covering Letter (Ref Annexure 1) together with DEWA reference number of approved Final Design NOC (If applicable).	
2	Key plan showing the proposed work on Dubai map with North direction.	
3	General layout plan showing proposed HV Network in DLTM coordinates with exact limit of the work.	
4	Layout plan showing proposed HV Network details with superimposed existing Electricity Services.	
5	Layout plan showing proposed HV Network details with superimposed existing Water Services.	
6	General cross section layout marker plan showing the location of the cross section markers and limits of each cross-section covering area.	
7	Detailed Cross section with proposed Work showing Horizontal / vertical clearance and protection details, with respect to existing DEWA services.	
8	Cross Section drawing details showing distribution of services corridor as per RTA ROW cross section or Approved Master Plan for Major projects: <ul style="list-style-type: none"> 1. Typical / Applicable cross section 2. Existing / As built Road Condition 3. Proposed HV Cable with respect to DEWA existing Services /Corridors 	
9	Layout Plan showing the site arrangement for machineries, equipment, materials, and site access route.	
10	Detailed program of proposed work	
11	Contractor's emergency contact details.	
12	Detailed Method statement (including protection/crossing of DEWA existing services - If applicable).	



S No	Submission Requirements for Construction NOC
13	Trial pit /site verification from Transmission Line Maintenance department for 132/400 kV Cable/O.H.L (If applicable).
14	Trial pit/site verification from Distribution Maintenance department for 6.6/11/33 kV Cable/O.H.L (If applicable).
15	Trial pit verification from Project consultant/client for DEWA Water services (If applicable).



43	NOC Type	Design NOC, Construction NOC
	Project Type	Network Services – Electricity EHV
S No	Submission Requirements for Design NOC	
1	Covering Letter (Ref Annexure 1).	
2	Key plan showing the proposed work on Dubai map with North direction.	
3	General layout plan showing proposed EHV Network in DLTM coordinates with exact limit of the work.	
4	Layout plan showing proposed EHV Network details with superimposed existing Electricity Services.	
5	Layout plan showing proposed EHV Network details with superimposed existing Water Services.	
6	General cross section layout marker plan showing the location of the cross section markers and limits of each cross-section covering area.	
7	Detailed Cross section with proposed Work showing Horizontal / vertical clearance and protection details, with respect to existing DEWA services.	
8	Cross Section drawing details showing distribution of services corridor as per RTA ROW cross section or Approved Master Plan for Major projects <ul style="list-style-type: none"> 1. Typical / Applicable cross section 2. Existing / As built Road Condition 3. Proposed EHV Cable line with respect to DEWA existing Services /Corridors 	
S No	Submission Requirements for Construction NOC	
1	Covering Letter (Ref Annexure 1) together with DEWA reference number of approved Final Design NOC (If applicable).	
2	Key plan showing the proposed work on Dubai map with North direction.	
3	General layout plan showing proposed EHV Network in DLTM coordinates with exact limit of the work.	
4	Layout plan showing proposed EHV Network details with superimposed existing Electricity Services.	
5	Layout plan showing proposed EHV Network details with superimposed existing Water Services.	
6	General cross section layout marker plan showing the location of the cross section markers and limit of each cross-section covering area.	
7	Detailed Cross section with proposed Work showing Horizontal / vertical clearance and protection details, with respect to existing DEWA services.	
8	Cross Section drawing details showing distribution of services corridor as per RTA ROW cross section or Approved Master Plan for Major projects: <ul style="list-style-type: none"> 1. Typical / Applicable cross section 2. Existing / As built Road Condition 3. Proposed EHV Cable with respect to DEWA existing Services /Corridors 	
9	Layout Plan showing the site arrangement for machineries, equipment, materials, and site access route.	
10	Detailed program of proposed work	



S No	Submission Requirements for Construction NOC
11	Contractor's emergency contact details.
12	Detailed Method statement (including protection/crossing of DEWA existing services - If applicable).
13	Trial pit /site verification from Transmission Line Maintenance department for 132/400 kV Cable/O.H.L (If applicable).
14	Trial pit/site verification from Distribution Maintenance department for 6.6/11/33 kV Cable/O.H.L (If applicable).
15	Trial pit verification from Project consultant/client for DEWA Water services (If applicable).



44	NOC Type	Design NOC, Construction NOC
	Project Type	Network Services – Water Distribution
S No	Submission Requirements for Design NOC	
1	Covering Letter (Ref Annexure 1)	
2	Key plan showing the proposed work on Dubai map with North direction.	
3	General layout plan showing proposed Water Distribution Network in DLTM coordinates with exact limit of the work.	
4	Layout plan showing proposed Water Distribution Network details with superimposed existing Electricity Services.	
5	Layout plan showing proposed Water Distribution Network details with superimposed existing Water Services.	
6	General cross section layout marker plan showing the location of the cross section markers and limits of each cross-section covering area.	
7	Detailed Cross section with proposed Work showing Horizontal / vertical clearance and protection details, with respect to existing DEWA services.	
8	Cross Section drawing details showing distribution of services corridor as per RTA ROW cross section or Approved Master Plan for Major projects: <ol style="list-style-type: none"> 1. Typical / Applicable cross section 2. Existing / As built Road Condition 3. Proposed Water Distribution line with respect to DEWA existing Services /Corridors 	
9	Copy of approved master plan letter for Developer projects.	
S No	Submission Requirements for Construction NOC	
1	Covering Letter (Ref Annexure 1) together with DEWA reference number of approved Final Design NOC (If applicable).	
2	Key plan showing the proposed work on Dubai map with North direction.	
3	General layout plan showing proposed Water Distribution Network in DLTM coordinates with exact limit of the work.	
4	Layout plan showing proposed Water Distribution Network details with superimposed existing Electricity Services.	
5	Layout plan showing proposed Water Distribution Network details with superimposed existing Water Services.	
6	General cross section layout marker plan showing the location of the cross section markers and limits of each cross-section covering area.	
7	Detailed Cross section with proposed Work showing Horizontal / vertical clearance and protection details, with respect to existing DEWA services.	
8	Cross Section drawing details showing distribution of services corridor as per RTA ROW cross section or Approved Master Plan for Major projects: <ol style="list-style-type: none"> 1. Typical / Applicable cross section 2. Existing / As built Road Condition 3. Proposed Water Distribution line with respect to DEWA existing Services /Corridors 	
9	Layout Plan showing the site arrangement for machineries, equipment, materials, and site access route.	



S No	Submission Requirements for Construction NOC
10	Detailed program of proposed work
11	Contractor's emergency contact details.
12	Detailed Method statement (including protection/crossing of DEWA existing services - If applicable).
13	Trial pit /site verification from Transmission Line Maintenance department for 132/400 kV Cable/O.H.L (If applicable).
14	Trial pit/site verification from Distribution Maintenance department for 6.6/11/33 kV Cable/O.H.L (If applicable).
15	Trial pit verification from Project consultant/client for DEWA Water services (If applicable).



45	NOC Type	Design NOC, Construction NOC
	Project Type	Network Services – Water Transmission
S No	Submission Requirements for Design NOC	
1	Covering Letter (Ref Annexure 1).	
2	Key plan showing the proposed work on Dubai map with North direction.	
3	General layout plan showing proposed Water Transmission Network in DLTM coordinates with exact limit of the work.	
4	Layout plan showing proposed Water Transmission Network details with superimposed existing Electricity Services.	
5	Layout plan showing proposed Water Transmission Network details with superimposed existing Electricity Services.	
6	General cross section layout marker plan showing the location of the cross section markers and limits of each cross-section covering area.	
7	Detailed Cross section with proposed Work showing Horizontal / vertical clearance and protection details, with respect to existing DEWA services.	
8	Cross Section drawing details showing distribution of services corridor as per RTA ROW cross section or Approved Master Plan for Major projects: <ol style="list-style-type: none"> 1. Typical / Applicable cross section 2. Existing / As built Road Condition 3. Proposed Water Transmission line with respect to DEWA existing Services /Corridors. 	
9	Copy of approved master plan letter for Developer projects.	
S No	Submission Requirements for Construction NOC	
1	Covering Letter (Ref Annexure 1) together with DEWA reference number of approved Final Design NOC (If applicable).	
2	Key plan showing the proposed work on Dubai map with North direction.	
3	General layout plan showing proposed Water Transmission Network in DLTM coordinates with exact limit of the work.	
4	Layout plan showing proposed Water Transmission Network details with superimposed existing Electricity Services.	
5	Layout plan showing proposed Water Transmission Network details with superimposed existing Electricity Services.	
6	General cross section layout marker plan showing the location of the cross section markers and limits of each cross-section covering area.	
7	Detailed Cross section with proposed Work showing Horizontal / vertical clearance and protection details, with respect to existing DEWA services.	
8	Cross Section drawing details showing distribution of services corridor as per RTA ROW cross section or Approved Master Plan for Major projects: <ol style="list-style-type: none"> 1. Typical / Applicable cross section 2. Existing / As built Road Condition 3. Proposed Water Transmission line with respect to DEWA existing Services /Corridors. 	
9	Layout Plan showing the site arrangement for machineries, equipment, materials, and site access route.	
10	Detailed program of proposed work	
11	Contractor's emergency contact details.	



S No	Submission Requirements for Construction NOC
12	Detailed Method statement (including protection/crossing of DEWA existing services - If applicable).
13	Trial pit /site verification from Transmission Line Maintenance department for 132/400 kV Cable/O.H.L (If applicable).
14	Trial pit/site verification from Distribution Maintenance department for 6.6/11/33 kV Cable/O.H.L (If applicable).
15	Trial pit verification from Project consultant/client for DEWA Water services (If applicable).





46	NOC Type	Design NOC, Construction NOC
	Project Type	Network Services – Sewerage
S No	Submission Requirements for Design NOC	
1	Covering Letter (Ref Annexure 1).	
2	Key plan showing the proposed work on Dubai map with North direction.	
3	General layout plan showing proposed Sewerage Network in DLTM coordinates with exact limit of the work.	
4	Layout plan showing proposed Sewerage Network details with superimposed existing Electricity Services.	
5	Layout plan showing proposed Sewerage Network details with superimposed existing Water Services.	
6	General cross section layout marker plan showing the location of the cross section markers and limits of each cross-section covering area.	
7	Detailed Cross section with proposed Work showing Horizontal / vertical clearance and protection details, with respect to existing DEWA services.	
8	Cross Section drawing details showing distribution of services corridor as per RTA ROW cross section or Approved Master Plan for Major projects: 1. Typical / Applicable cross section 2. Existing / As built Road Condition 3. Proposed Sewer line with respect to DEWA existing Services /Corridors	
S No	Submission Requirements for Construction NOC	
1	Covering Letter (Ref Annexure 1) together with DEWA reference number of approved Final Design NOC (If applicable).	
2	Key plan showing the proposed work on Dubai map with North direction.	
3	General layout plan showing proposed Sewerage Network in DLTM coordinates with exact limit of the work.	
4	Layout plan showing proposed Sewerage Network details with superimposed existing Electricity Services.	
5	Layout plan showing proposed Sewerage Network details with superimposed existing Water Services.	
6	General cross section layout marker plan showing the location of the cross section markers and limit of each cross-section covering area.	
7	Detailed Cross section with proposed Work showing Horizontal / vertical clearance and protection details, with respect to existing DEWA services.	
8	Cross Section drawing details showing distribution of services corridor as per RTA ROW cross section or Approved Master Plan for Major projects: 1. Typical / Applicable cross section 2. Existing / As built Road Condition 3. Proposed Sewer line with respect to DEWA existing Services /Corridors.	
9	Layout Plan showing the site arrangement for machineries, equipment, materials, and site access route.	
10	Detailed program of proposed work	
11	Contractor's emergency contact details.	



S No	Submission Requirements for Construction NOC
12	Detailed Method statement (including protection/crossing of DEWA existing services - If applicable).
13	Trial pit /site verification from Transmission Line Maintenance department for 132/400 kV Cable/O.H.L (If applicable).
14	Trial pit/site verification from Distribution Maintenance department for 6.6/11/33 kV Cable/O.H.L (If applicable).
15	Trial pit verification from Project consultant/client for DEWA Water services (If applicable).



47	NOC Type	Design NOC, Construction NOC
	Project Type	Network Services – Storm Water Drainage
S No	Submission Requirements for Design NOC	
1	Covering Letter (Ref Annexure 1).	
2	Key plan showing the proposed work on Dubai map with North direction.	
3	General layout plan showing proposed Drainage Network in DLTM coordinates with exact limit of the work.	
4	Layout plan showing proposed Drainage Network details with superimposed existing Electricity Services.	
5	Layout plan showing proposed Drainage Network details with superimposed existing Water Services.	
6	General cross section layout marker plan showing the location of the cross section markers and limits of each cross-section covering area.	
7	Detailed Cross section with proposed Work showing Horizontal / vertical clearance and protection details, with respect to existing DEWA services.	
8	Cross Section drawing details showing distribution of services corridor as per RTA ROW cross section or Approved Master Plan for Major projects: <ul style="list-style-type: none"> 1. Typical / Applicable cross section 2. Existing / As built Road Condition 3. Proposed Storm Water Drainage line with respect to DEWA existing Services /Corridors. 	
S No	Submission Requirements for Construction NOC	
1	Covering Letter (Ref Annexure 1) together with DEWA reference number of approved Final Design NOC (If applicable).	
2	Key plan showing the proposed work on Dubai map with North direction.	
3	General layout plan showing proposed Drainage Network in DLTM coordinates with exact limit of the work.	
4	Layout plan showing proposed Drainage Network details with superimposed existing Electricity Services.	
5	Layout plan showing proposed Drainage Network details with superimposed existing Water Services.	
6	General cross section layout marker plan showing the location of the cross section markers and limits of each cross-section covering area.	
7	Detailed Cross section with proposed Work showing Horizontal / vertical clearance and protection details, with respect to existing DEWA services.	
8	Cross Section drawing details showing distribution of services corridor as per RTA ROW cross section or Approved Master Plan for Major projects: <ul style="list-style-type: none"> 1. Typical / Applicable cross section 2. Existing / As built Road Condition 3. Proposed Storm Water Drainage line with respect to DEWA existing Services /Corridors. 	
9	Layout Plan showing the site arrangement for machineries, equipment, materials, and site access route.	
10	Detailed program of proposed work	

S No	Submission Requirements for Construction NOC
11	Contractor's emergency contact details.
12	Detailed Method statement (including protection/crossing of DEWA existing services - If applicable).
13	Trial pit /site verification from Transmission Line Maintenance department for 132/400 kV Cable/O.H.L (If applicable).
14	Trial pit/site verification from Distribution Maintenance department for 6.6/11/33 kV Cable/O.H.L (If applicable).
15	Trial pit verification from Project consultant/client for DEWA Water services (If applicable).

48	NOC Type	Design NOC, Construction NOC
	Project Type	Network Services – Irrigation
S No	Submission Requirements for Design NOC	
1	Covering Letter (Ref Annexure 1).	
2	Key plan showing the proposed work on Dubai map with North direction.	
3	General layout plan showing proposed Irrigation Network in DLTM coordinates with exact limit of the work.	
4	Layout plan showing proposed Irrigation Network details with superimposed existing Electricity Services.	
5	Layout plan showing proposed Irrigation Network details with superimposed existing Water Services.	
6	General cross section layout marker plan showing the location of the cross section markers and limits of each cross-section covering area.	
7	Detailed Cross section with proposed Work showing Horizontal / vertical clearance and protection details, with respect to existing DEWA services.	
8	Cross Section drawing details showing distribution of services corridors per RTA ROW cross section or Approved Master Plan for Major projects: 1. Typical / Applicable cross section 2. Existing / As built Road Condition 3. Proposed Irrigation line with respect to DEWA existing Services /Corridors	
S No	Submission Requirements for Construction NOC	
1	Covering Letter (Ref Annexure 1) together with DEWA reference number of approved Final Design NOC (If applicable).	
2	Key plan showing the proposed work on Dubai map with North direction.	
3	General layout plan showing proposed Irrigation Network in DLTM coordinates with exact limit of the work.	
4	Layout plan showing proposed Irrigation Network details with superimposed existing Electricity Services.	
5	Layout plan showing proposed Irrigation Network details with superimposed existing Water Services.	
6	General cross section layout marker plan showing the location of the cross section markers and limits of each cross-section covering area.	
7	Detailed Cross section with proposed Work showing Horizontal / vertical clearance and protection details, with respect to existing DEWA services.	
8	Cross Section drawing details showing distribution of services corridor as per RTA ROW cross section or Approved Master Plan for Major projects: 1. Typical / Applicable cross section 2. Existing / As built Road Condition 3. Proposed Irrigation line with respect to DEWA existing Services /Corridors	
9	Layout Plan showing the site arrangement for machineries, equipment, materials, and site access route.	
10	Detailed program of proposed work	
11	Contractor's emergency contact details.	



S No	Submission Requirements for Construction NOC
12	Detailed Method statement (including protection/crossing of DEWA existing services - If applicable).
13	Trial pit /site verification from Transmission Line Maintenance department for 132/400 kV Cable/O.H.L (If applicable).
14	Trial pit/site verification from Distribution Maintenance department for 6.6/11/33 kV Cable/O.H.L (If applicable).
15	Trial pit verification from Project consultant/client for DEWA Water services (If applicable).

49	NOC Type	Design NOC, Construction NOC
	Project Type	Network Services – District Cooling
S No	Submission Requirements for Design NOC	
1	Covering Letter (Ref Annexure 1).	
2	Key plan showing the proposed work on Dubai map with North direction.	
3	General layout plan showing proposed District Cooling Network in DLTM coordinates with exact limit of the work.	
4	Layout plan showing proposed District Cooling Network details with superimposed existing Electricity Services.	
5	Layout plan showing proposed District Cooling Network details with superimposed existing Water Services.	
6	General cross section layout marker plan showing the location of the cross section markers and limits of each cross-section covering area.	
7	Detailed Cross section with proposed Work showing Horizontal / vertical clearance and protection details, with respect to existing DEWA services.	
8	Cross Section drawing details showing distribution of services corridors per RTA ROW cross section or Approved Master Plan for Major projects: 1. Typical / Applicable cross section 2. Existing / As built Road Condition 3. Proposed District cooling line with respect to DEWA existing Services /Corridors.	
S No	Submission Requirements for Construction NOC	
1	Covering Letter (Ref Annexure 1) along with DEWA reference number of approved Final Design NOC (If applicable).	
2	Key plan showing the proposed work on Dubai map with North direction.	
3	General layout plan showing proposed District Cooling Network with DLTM coordinates with exact limit of the work.	
4	Layout plan showing proposed District Cooling Network details with superimposed existing Electricity Services.	
5	Layout plan showing proposed District Cooling Network details with superimposed existing Water Services.	
6	General cross section layout marker plan showing the location of the cross section markers and limits of each cross-section covering area.	
7	Detailed Cross section with proposed Work showing Horizontal / vertical clearance and protection details, with respect to existing DEWA services.	
8	Cross Section drawing details showing distribution of services corridor as per RTA ROW cross section or Approved Master Plan for Major projects: 1. Typical / Applicable cross section 2. Existing / As built Road Condition 3. Proposed District cooling line with respect to DEWA existing Services /Corridors.	
9	Layout Plan showing the site arrangement for machineries, equipment, materials, and site access route.	
10	Detailed program of proposed work	
11	Contractor's emergency contact details.	

S No	Submission Requirements for Construction NOC
12	Detailed Method statement (including protection/crossing of DEWA existing services - If applicable).
13	Trial pit /site verification from Transmission Line Maintenance department for 132/400 kV Cable/O.H.L (If applicable).
14	Trial pit/site verification from Distribution Maintenance department for 6.6/11/33 kV Cable/O.H.L (If applicable).
15	Trial pit verification from Project consultant/client for DEWA Water services (If applicable).



50	NOC Type	Design NOC, Construction NOC
	Project Type	Network Services – Gas/Fuel
S No	Submission Requirements for Design NOC	
1	Covering Letter (Ref Annexure 1).	
2	Key plan showing the proposed work on Dubai map with North direction.	
3	General layout plan showing proposed Gas/Fuel Network in DLTM coordinates with exact limit of the work.	
4	Layout plan showing proposed Gas/Fuel Network details with superimposed existing Electricity Services.	
5	Layout plan showing proposed Gas/Fuel Network details with superimposed existing Water Services.	
6	General cross section layout marker plan showing the location of the cross section markers and limits of each cross-section covering area.	
7	Detailed Cross section with proposed Work showing Horizontal / vertical clearance and protection details, with respect to existing DEWA services.	
8	Cross Section drawing details showing distribution of services corridors per RTA ROW cross section or Approved Master Plan for Major projects: <ol style="list-style-type: none"> 1. Typical / Applicable cross section 2. Existing / As built Road Condition 3. Proposed Gas/Fuel line with respect to DEWA existing Services /Corridors. 	
S No	Submission Requirements for Construction NOC	
1	Covering Letter (Ref Annexure 1) together with DEWA reference number of approved Final Design NOC (If applicable).	
2	Key plan showing the proposed work on Dubai map with North direction.	
3	General layout plan showing proposed Gas/Fuel Network in DLTM coordinates with exact limit of the work.	
4	Layout plan showing proposed Gas/Fuel Network details with superimposed existing Electricity Services.	
5	Layout plan showing proposed Gas/Fuel Network details with superimposed existing Water Services.	
6	General cross section layout marker plan showing the location of the cross section markers and limits of each cross-section covering area.	
7	Detailed Cross section with proposed Work showing Horizontal / vertical clearance and protection details, with respect to existing DEWA services.	
8	Cross Section drawing details showing distribution of services corridor as per RTA ROW cross section or Approved Master Plan for Major projects: <ol style="list-style-type: none"> 1. Typical / Applicable cross section 2. Existing / As built Road Condition 3. Proposed Gas/Fuel line with respect to DEWA existing Services /Corridors. 	
9	Layout Plan showing the site arrangement for machineries, equipment, materials, and site access route.	
10	Detailed program of proposed work	
11	Contractor's emergency contact details.	



S No	Submission Requirements for Construction NOC
12	Detailed Method statement (including protection/crossing of DEWA existing services - If applicable).
13	Trial pit /site verification from Transmission Line Maintenance department for 132/400 kV Cable/O.H.L (If applicable).
14	Trial pit/site verification from Distribution Maintenance department for 6.6/11/33 kV Cable/O.H.L (If applicable).
15	Trial pit verification from Project consultant/client for DEWA Water services (If applicable).

51	NOC Type	Design NOC, Construction NOC
	Project Type	Network Services – Telecommunication
S No	Submission Requirements for Design NOC	
1	Covering Letter (Ref Annexure 1).	
2	Key plan showing the proposed work on Dubai map with North direction.	
3	General layout plan showing proposed Telecommunication Network in DLTM coordinates with exact limit of the work.	
4	Layout plan showing proposed Telecommunication Network details with superimposed existing Electricity Services.	
5	Layout plan showing proposed Telecommunication Network details with superimposed existing Water Services.	
6	General cross section layout marker plan showing the location of the cross section markers and limits of each cross-section covering area.	
7	Detailed Cross section with proposed Work showing Horizontal / vertical clearance and protection details, with respect to existing DEWA services.	
8	Cross Section drawing details showing distribution of services corridors per RTA ROW cross section or Approved Master Plan for Major projects: 1. Typical / Applicable cross section 2. Existing / As built Road Condition 3. Proposed Telecommunication line with respect to DEWA existing Services /Corridors.	
S No	Submission Requirements for Construction NOC	
1	Covering Letter (Ref Annexure 1) along with DEWA reference number of approved Final Design NOC (If applicable).	
2	Key plan showing the proposed work on Dubai map with North direction.	
3	General layout plan showing proposed Telecommunication Network in DLTM coordinates with exact limit of the work.	
4	Layout plan showing proposed Telecommunication Network details with superimposed existing Electricity Services.	
5	Layout plan showing proposed Telecommunication Network details with superimposed existing Water Services.	
6	General cross section layout marker plan showing the location of the cross section markers and limits of each cross-section covering area.	
7	Detailed Cross section with proposed Work showing Horizontal / vertical clearance and protection details, with respect to existing DEWA services.	
8	Cross Section drawing details showing distribution of services corridor as per RTA ROW cross section or Approved Master Plan for Major projects: 1. Typical / Applicable cross section 2. Existing / As built Road Condition 3. Proposed Telecommunication line with respect to DEWA existing Services /Corridors	
9	Layout Plan showing the site arrangement for machineries, equipment, materials, and site access route.	
10	Detailed program of proposed work	



S No	Submission Requirements for Construction NOC
11	Contractor's emergency contact details.
12	Detailed Method statement (including protection/crossing of DEWA existing services - If applicable).
13	Trial pit /site verification from Transmission Line Maintenance department for 132/400 kV Cable/O.H.L (If applicable).
14	Trial pit/site verification from Distribution Maintenance department for 6.6/11/33 kV Cable/O.H.L (If applicable).
15	Trial pit verification from Project consultant/client for DEWA Water services (If applicable).



52	NOC Type	Design NOC, Construction NOC
	Project Type	Network Services – Firefighting (Civil Defense)
S No	Submission Requirements for Design NOC	
1	Covering Letter (Ref Annexure 1).	
2	Key plan showing the proposed work on Dubai map with North direction.	
3	General layout plan showing proposed Firefighting Network in DLTM coordinates with exact limit of the work.	
4	Layout plan showing proposed Firefighting Network details with superimposed existing Electricity Services.	
5	Layout plan showing proposed Firefighting Network details with superimposed existing Water Services.	
6	General cross section layout marker plan showing the location of the cross section markers and limits of each cross-section covering area.	
7	Detailed Cross section with proposed Work showing Horizontal / vertical clearance and protection details, with respect to existing DEWA services.	
8	Cross Section drawing details showing distribution of services corridors per RTA ROW cross section or Approved Master Plan for Major projects: <ol style="list-style-type: none"> 1. Typical / Applicable cross section 2. Existing / As built Road Condition 3. Proposed Firefighting line with respect to DEWA existing Services /Corridors. 	
S No	Submission Requirements for Construction NOC	
1	Covering Letter (Ref Annexure 1) along with DEWA reference number of approved Final Design NOC (If applicable).	
2	Key plan showing the proposed work on Dubai map with North direction.	
3	General layout plan showing proposed Firefighting Network in DLTM coordinates with exact limit of the work.	
4	Layout plan showing proposed Firefighting Network details with superimposed existing Electricity Services.	
5	Layout plan showing proposed Firefighting Network details with superimposed existing Water Services.	
6	General cross section layout marker plan showing the location of the cross section markers and limits of each cross-section covering area.	
7	Detailed Cross section with proposed Work showing Horizontal / vertical clearance and protection details, with respect to existing DEWA services.	
8	Cross Section drawing details showing distribution of services corridor as per RTA ROW cross section or Approved Master Plan for Major projects: <ol style="list-style-type: none"> 1. Typical / Applicable cross section 2. Existing / As built Road Condition 3. Proposed Firefighting line with respect to DEWA existing Services /Corridors. 	
9	Layout Plan showing the site arrangement for machineries, equipment, materials, and site access route.	
10	Detailed program of proposed work	
11	Contractor's emergency contact details.	



S No	Submission Requirements for Construction NOC
12	Detailed Method statement (including protection/crossing of DEWA existing services - If applicable).
13	Trial pit /site verification from Transmission Line Maintenance department for 132/400 kV Cable/O.H.L (If applicable).
14	Trial pit/site verification from Distribution Maintenance department for 6.6/11/33 kV Cable/O.H.L (If applicable).
15	Trial pit verification from Project consultant/client for DEWA Water services (If applicable).

53	NOC Type	Design NOC, Construction NOC
	Project Type	Road Projects – RTA Infrastructure
S No	Submission Requirements for Design NOC	
1	Covering Letter (Ref Annexure 1).	
2	Key plan showing the proposed work on Dubai map with North direction.	
3	General layout plan showing proposed road/utility works in DLTM coordinates with exact limit of the work	
4	Layout drawings showing proposed road with pavement type and utility (Proposal/Protection/Relocation/slewing) works details with superimposed existing Electricity Services along with existing ducts extension/protection details.	
5	Layout drawings showing proposed road with pavement type and utility (Proposal/Protection/Relocation/Slewing) works details with superimposed existing Water Services along with existing sleeves extension/protection details.	
6	General cross section layout marker plan showing the location of the cross section markers and limits of each cross-section covering area.	
7	Detailed Cross section with proposed Work showing Horizontal / vertical clearance and protection details, with respect to existing DEWA services.	
8	Cross Section drawing details showing distribution of services corridor as per RTA ROW cross section. <ol style="list-style-type: none"> 1. Typical / Applicable cross section 2. Existing / As built Road Condition 3. Proposed road types and utilities with respect to DEWA existing Services /Corridors 	
S No	Submission Requirements for Construction NOC	
1	Covering Letter (Ref Annexure 1) along with DEWA reference number of approved Final Design NOC	
2	Key plan showing the proposed work on Dubai map with North direction.	
3	General layout plan showing proposed road/utility works in DLTM coordinates with exact limit of the work	
4	Layout drawings showing proposed road with pavement type and utility (Proposal/Protection/Relocation/slewing) works details with superimposed existing Electricity Services along with existing ducts extension/protection details.	
5	Layout drawings showing proposed road with pavement type and utility (Proposal/Protection/Relocation/Slewing) works details with superimposed existing Water Services along with existing sleeves extension/protection details.	
6	Detailed drawings for proposed ducts as per DEWA Approved Design NOC.	
7	General cross section layout marker plan showing the location of the cross section markers and limits of each cross-section covering area.	
8	Detailed Cross section with proposed Work showing Horizontal / vertical clearance and protection details, with respect to existing DEWA services.	
9	Cross Section drawing details showing distribution of services corridor as per RTA ROW cross section <ol style="list-style-type: none"> 1. Typical / Applicable cross section 2. Existing / As built Road Condition 3. Proposed road types and utilities with respect to DEWA existing Services /Corridors. 	



S No	Submission Requirements for Construction NOC
10	Layout Plan showing the site arrangement for machineries, equipment, materials, and site access route.
11	Detailed Program of proposed work.
12	Contractor's emergency contact details.
13	Detailed Method statement for the proposed works.
14	Trial pit /site verification from Transmission Line Maintenance department for 132/400 kV Cable/O.H.L (If applicable).
15	Trial pit/site verification from Distribution Maintenance department for 6.6/11/33 kV Cable/O.H.L (If applicable).
16	Trial pit verification from Project consultant/client for DEWA Water services (If applicable).



54	NOC Type	Design NOC, Construction NOC
	Project Type	Road Projects – RTA Asphalt & Interlock Work
S No	Submission Requirements for Design NOC	
1	Covering Letter (Ref Annexure 1).	
2	Key plan showing the proposed work on Dubai map with North direction.	
3	General layout plan showing proposed road works in DLTM coordinates with exact limit of the work.	
4	Layout drawings showing proposed road with pavement type and DEWA Services (Protection/Relocation/slewing) works details with superimposed existing Electricity Services along with existing ducts extension/protection details.	
5	Layout drawings showing proposed road with pavement type and DEWA Services (Protection/Relocation/Slewing) works details with superimposed existing Water Services along with existing sleeves extension/protection details.	
6	General cross section layout marker plan showing the location of the cross section markers and limits of each cross-section covering area.	
7	Detailed Cross section with proposed Work showing Horizontal / vertical clearance and protection details, with respect to existing DEWA services.	
8	Cross Section drawing details showing distribution of services corridor as per RTA ROW cross section. 1. Typical / Applicable cross section 2. Existing / As built Road Condition 3. Proposed road types with respect to DEWA existing Services /Corridors.	
S No	Submission Requirements for Construction NOC	
1	Covering Letter (Ref Annexure 1) together with DEWA reference number of approved Final Design NOC	
2	Key plan showing the proposed work on Dubai map with North direction.	
3	General layout plan showing proposed road works in DLTM coordinates with exact limit of the work.	
4	Layout drawings showing proposed road with pavement type and DEWA Services (Protection/Relocation/slewing) works details with superimposed existing Electricity Services along with existing ducts extension/protection details.	
5	Layout drawings showing proposed road with pavement type and DEWA Services (Protection/Relocation/Slewing) works details with superimposed existing Water Services along with existing sleeves extension/protection details.	
6	Detailed drawings for proposed ducts as per DEWA Approved Design NOC.	
7	General cross section layout marker plan showing the location of the cross section markers and limits of each cross-section covering area.	
8	Detailed Cross section with proposed Work showing Horizontal / vertical clearance and protection details, with respect to existing DEWA services.	
9	Cross Section drawing details showing distribution of services corridor as per RTA ROW cross section 1. Typical / Applicable cross section 2. Existing / As built Road Condition 3. Proposed road types with respect to DEWA existing Services /Corridors	



S No	Submission Requirements for Construction NOC
10	Layout Plan showing the site arrangement for machineries, equipment, materials, and site access route.
11	Detailed Program of proposed work.
12	Contractor's emergency contact details.
13	Detailed Method statement for the proposed works.
14	Trial pit /site verification from Transmission Line Maintenance department for 132/400 kV Cable/O.H.L (If applicable).
15	Trial pit/site verification from Distribution Maintenance department for 6.6/11/33 kV Cable/O.H.L (If applicable).
16	Trial pit verification from Project consultant/client for DEWA Water services (If applicable).
Note: DEWA will not be responsible for the reinstatement of special tiles, granite floors, imported tiles, etc..., The concerned Party should reinstate same as before, at their own cost. Undertaking letter to be submitted (Ref Annexure 9) .	

55	NOC Type	Design NOC, Construction NOC
	Project Type	Road Projects – RTA Asphalt Work
S No	Submission Requirements for Design NOC	
1	Covering Letter (Ref Annexure 1).	
2	Key plan showing the proposed work on Dubai map with North direction.	
3	General layout plan showing proposed road works in DLTM coordinates with exact limit of the work.	
4	Layout drawings showing proposed road with pavement type and DEWA Services (Protection/Relocation/slewing) works details with superimposed existing Electricity Services along with existing ducts extension/protection details.	
5	Layout drawings showing proposed road with pavement type and DEWA Services (Protection/Relocation/Slewing) works details with superimposed existing Water Services along with existing sleeves extension/protection details.	
6	General cross section layout marker plan showing the location of the cross section markers and limits of each cross-section covering area.	
7	Detailed Cross section with proposed Work showing Horizontal / vertical clearance and protection details, with respect to existing DEWA services.	
8	Cross Section drawing details showing distribution of services corridor as per RTA ROW cross section. <ol style="list-style-type: none"> 1. Typical / Applicable cross section 2. Existing / As built Road Condition 3. Proposed road types with respect to DEWA existing Services /Corridors 	
S No	Submission Requirements for Construction NOC	
1	Covering Letter (Ref Annexure 1) together with DEWA reference number of approved Final Design NOC	
2	Key plan showing the proposed work on Dubai map with North direction.	
3	General layout plan showing proposed road works in DLTM coordinates with exact limit of the work.	
4	Layout drawings showing proposed road with pavement type and DEWA Services (Protection/Relocation/slewing) works details with superimposed existing Electricity Services along with existing ducts extension/protection details.	
5	Layout drawings showing proposed road with pavement type and DEWA Services (Protection/Relocation/Slewing) works details with superimposed existing Water Services along with existing sleeves extension/protection details.	
6	Detailed drawings for proposed ducts as per DEWA Approved Design NOC.	
7	General cross section layout marker plan showing the location of the cross section markers and limits of each cross-section covering area.	
8	Detailed Cross section with proposed Work showing Horizontal / vertical clearance and protection details, with respect to existing DEWA services.	
9	Cross Section drawing details showing distribution of services corridor as per RTA ROW cross section <ol style="list-style-type: none"> 1. Typical / Applicable cross section 2. Existing / As built Road Condition 3. Proposed road types with respect to DEWA existing Services /Corridors 	

S No	Submission Requirements for Construction NOC
10	Layout Plan showing the site arrangement for machineries, equipment, materials, and site access route.
11	Detailed Program of proposed work
12	Contractor's emergency contact details.
13	Detailed Method statement for the proposed works.
14	Trial pit /site verification from Transmission Line Maintenance department for 132/400 kV Cable/O.H.L (If applicable).
15	Trial pit/site verification from Distribution Maintenance department for 6.6/11/33 kV Cable/O.H.L (If applicable).
16	Trial pit verification from Project consultant/client for DEWA Water services (If applicable).

56	NOC Type	Design NOC, Construction NOC
	Project Type	Road Projects – Private Infrastructure
S No	Submission Requirements for Design NOC	
1	Covering Letter (Ref Annexure 1) with Copy of approved master plan.	
2	Key plan showing the proposed work on Dubai map with North direction.	
3	General layout plan showing proposed road/utility works in DLTM coordinates with exact limit of the work	
4	Layout drawings showing proposed road with pavement type and utility (Proposal/Protection/Relocation/slewing) works details with superimposed existing Electricity Services along with existing ducts extension/protection details.	
5	Layout drawings showing proposed road with pavement type and utility (Proposal/Protection/Relocation/Slewing) works details with superimposed existing Water Services along with existing sleeves extension/protection details.	
6	Indicate DEWA Future ducts as per approved Master plan.	
7	General cross section layout marker plan showing the location of the cross section markers and limits of each cross-section covering area.	
8	Detailed Cross section with proposed Work showing Horizontal / vertical clearance and protection details, with respect to existing DEWA services.	
9	Cross Section drawing details showing distribution of services corridor as per Approved Master Plan. <ol style="list-style-type: none"> 1. Typical / Applicable cross section 2. Existing / As built Road Condition 3. Proposed road types and utilities with respect to DEWA existing Services /Corridors 	
S No	Submission Requirements for Construction NOC	
1	Covering Letter (Ref Annexure 1) together with DEWA reference number of approved Final Design NOC	
2	Key plan showing the proposed work on Dubai map with North direction.	
3	General layout plan showing proposed road/utility works in DLTM coordinates with exact limit of the work	
4	Layout drawings showing proposed road with pavement type and utility (Proposal/Protection/Relocation/slewing) works details with superimposed existing Electricity Services along with existing ducts extension/protection details.	
5	Layout drawings showing proposed road with pavement type and utility (Proposal/Protection/Relocation/Slewing) works details with superimposed existing Water Services along with existing sleeves extension/protection details.	
6	Detailed drawings for proposed ducts as per DEWA Approved Design NOC.	
7	General cross section layout marker plan showing the location of the cross section markers and limits of each cross-section covering area.	
8	Detailed Cross section with proposed Work showing Horizontal / vertical clearance and protection details, with respect to existing DEWA services.	



S No	Submission Requirements for Construction NOC
9	Cross section drawing details showing distribution of services corridor as per Approved Master Plan: <ol style="list-style-type: none"> 1. Typical / Applicable cross section 2. Existing / As built Road Condition 3. Proposed road types and utilities with respect to DEWA existing Services /Corridors
10	Layout Plan showing the site arrangement for machineries, equipment, materials, and site access route.
11	Detailed Program of proposed work.
12	Contractor's emergency contact details.
13	Detailed Method statement for the proposed works.
14	Trial pit /site verification from Transmission Line Maintenance department for 132/400 kV Cable/O.H.L (If applicable).
15	Trial pit/site verification from Distribution Maintenance department for 6.6/11/33 kV Cable/O.H.L (If applicable).
16	Trial pit verification from Project consultant/client for DEWA Water services (If applicable).



57	NOC Type	Design NOC, Construction NOC
	Project Type	Road Projects – Private Asphalt & Interlock Work
S No	Submission Requirements for Design NOC	
1	Covering Letter (Ref Annexure 1) together with Copy of approved master plan.	
2	Key plan showing the proposed work on Dubai map with North direction.	
3	General layout plan showing proposed road works in DLTM coordinates with exact limit of the work.	
4	Layout drawings showing proposed road with pavement type and DEWA services (Protection/Relocation/slewing) works details with superimposed existing Electricity Services along with existing ducts extension/protection details.	
5	Layout drawings showing proposed road with pavement type and DEWA Services (Protection/Relocation/Slewing) works details with superimposed existing Water Services along with existing sleeves extension/protection details.	
6	Indicate DEWA Future ducts as per approved Master plan.	
7	General cross section layout marker plan showing the location of the cross section markers and limits of each cross-section covering area.	
8	Detailed Cross section with proposed Work showing Horizontal / vertical clearance and protection details, with respect to existing DEWA services.	
9	Cross Section drawing details showing distribution of services corridor as per Approved Master Plan. <ol style="list-style-type: none"> 1. Typical / Applicable cross section 2. Existing / As built Road Condition 3. Proposed road types with respect to DEWA existing Services /Corridors 	
S No	Submission Requirements for Construction NOC	
1	Covering Letter (Ref Annexure 1) together with DEWA reference number of approved Final Design NOC	
2	Key plan showing the proposed work on Dubai map with North direction.	
3	General layout plan showing proposed road works in DLTM coordinates with exact limit of the work.	
4	Layout drawings showing proposed road with pavement type and DEWA services (Protection/Relocation/slewing) works details with superimposed existing Electricity Services along with existing ducts extension/protection details.	
5	Layout drawings showing proposed road with pavement type and DEWA Services (Protection/Relocation/Slewing) works details with superimposed existing Water Services along with existing sleeves extension/protection details.	
6	Detailed drawings for proposed ducts as per DEWA Approved Design NOC.	
7	General cross section layout marker plan showing the location of the cross section markers and limits of each cross-section covering area.	
8	Detailed Cross section with proposed Work showing Horizontal / vertical clearance and protection details, with respect to existing DEWA services.	



S No	Submission Requirements for Construction NOC
9	Cross Section drawing details showing distribution of services corridor as per Approved Master Plan: <ol style="list-style-type: none"> 1. Typical / Applicable cross section 2. Existing / As built Road Condition 3. Proposed road types with respect to DEWA existing Services /Corridors
10	Layout Plan showing the site arrangement for machineries, equipment, materials, and site access route.
11	Detailed Program of proposed work
12	Contractor's emergency contact details.
13	Detailed Method statement for the proposed works.
14	Trial pit /site verification from Transmission Line Maintenance department for 132/400 kV Cable/O.H.L (If applicable).
15	Trial pit/site verification from Distribution Maintenance department for 6.6/11/33 kV Cable/O.H.L (If applicable).
16	Trial pit verification from Project consultant/client for DEWA Water services (If applicable).
Note: DEWA will not be responsible for the reinstatement of special tiles, granite floors, imported tiles, etc..., The concerned Party should reinstate same as before, at their own cost. Undertaking letter to be submitted (Ref Annexure 9).	



58	NOC Type	Design NOC, Construction NOC
	Project Type	Road Projects – Private Asphalt Work
S No	Submission Requirements for Design NOC	
1	Covering Letter (Ref Annexure 1) together with Copy of approved master plan.	
2	Key plan showing the proposed work on Dubai map with North direction.	
3	General layout plan showing proposed road works in DLTM coordinates with exact limit of the work.	
4	Layout drawings showing proposed road with pavement type and DEWA services (Protection/Relocation/slewing) works details with superimposed existing Electricity Services along with existing ducts extension/protection details.	
5	Layout drawings showing proposed road with pavement type and DEWA Services (Protection/Relocation/Slewing) works details with superimposed existing Water Services along with existing sleeves extension/protection details.	
6	Indicate DEWA Future ducts as per approved Master plan.	
7	General cross section layout marker plan showing the location of the cross section markers and limits of each cross-section covering area.	
8	Detailed Cross section with proposed Work showing Horizontal / vertical clearance and protection details, with respect to existing DEWA services.	
9	Cross Section drawing details showing distribution of services corridor as per Approved Master Plan. 1. Typical / Applicable cross section 2. Existing / As built Road Condition 3. Proposed road types with respect to DEWA existing Services /Corridors	
S No	Submission Requirements for Construction NOC	
1	Covering Letter (Ref Annexure 1) together with DEWA reference number of approved Final Design NOC	
2	Key plan showing the proposed work on Dubai map with North direction.	
3	General layout plan showing proposed road works in DLTM coordinates with exact limit of the work.	
4	Layout drawings showing proposed road with pavement type and DEWA services (Protection/Relocation/slewing) works details with superimposed existing Electricity Services along with existing ducts extension/protection details.	
5	Layout drawings showing proposed road with pavement type and DEWA Services (Protection/Relocation/Slewing) works details with superimposed existing Water Services along with existing sleeves extension/protection details.	
6	Detailed drawings for proposed ducts as per DEWA Approved Design NOC.	
7	General cross section layout marker plan showing the location of the cross section markers and limit of each cross-section covering area.	
8	Detailed Cross section with proposed Work showing Horizontal / vertical clearance and protection details, with respect to existing DEWA services.	

S No	Submission Requirements for Construction NOC
9	Cross Section drawing details showing distribution of services corridor as per Approved Master Plan <ol style="list-style-type: none"> 1. Typical / Applicable cross section 2. Existing / As built Road Condition 3. Proposed road types with respect to DEWA existing Services /Corridors
10	Layout Plan showing the site arrangement for machineries, equipment, materials, and site access route.
11	Detailed Program of proposed work.
12	Contractor's emergency contact details.
13	Detailed Method statement for the proposed works.
14	Trial pit /site verification from Transmission Line Maintenance department for 132/400 kV Cable/O.H.L (If applicable).
15	Trial pit/site verification from Distribution Maintenance department for 6.6/11/33 kV Cable/O.H.L (If applicable).
16	Trial pit verification from Project consultant/client for DEWA Water services (If applicable).

59	NOC Type	Design NOC, Construction NOC
	Project Type	Road Projects –Interlock Work
S No	Submission Requirements for Design NOC	
1	Covering Letter (Ref Annexure 1).	
2	Key plan showing the proposed work on Dubai map with North direction.	
3	General layout plan showing proposed road works in DLTM coordinates with exact limit of the work.	
4	Layout drawings showing proposed road with pavement type and DEWA Services (Protection/Relocation/slewing) works details with superimposed existing Electricity Services along with existing ducts extension/protection details.	
5	Layout drawings showing proposed road with pavement type and DEWA Services (Protection/Relocation/Slewing) works details with superimposed existing Water Services along with existing sleeves extension/protection details.	
6	General cross section layout marker plan showing the location of the cross section markers and limits of each cross-section covering area.	
7	Detailed Cross section with proposed Work showing Horizontal / vertical clearance and protection details, with respect to existing DEWA services.	
8	Cross Section drawing details showing distribution of services corridor as per RTA ROW cross section or Approved Master Plan for Major projects: <ol style="list-style-type: none"> 1. Typical / Applicable cross section 2. Existing / As built Road Condition 3. Proposed road types with respect to DEWA existing Services /Corridors 	
S No	Submission Requirements for Construction NOC	
1	Covering Letter (Ref Annexure 1) together with DEWA reference number of approved Final Design NOC	
2	Key plan showing the proposed work on Dubai map with North direction.	
3	General layout plan showing proposed road/utility works with DLTM coordinates with exact limit of the work.	
4	Layout drawings showing proposed road with pavement type and DEWA Services (Protection/Relocation/slewing) works details with superimposed existing Electricity Services along with existing ducts extension/protection details.	
5	Layout drawings showing proposed road with pavement type and DEWA Services (Protection/Relocation/Slewing) works details with superimposed existing Water Services along with existing sleeves extension/protection details.	
6	Detailed drawings for proposed ducts as per DEWA Approved Design NOC. (If Applicable)	
7	General cross section layout marker plan showing the location of the cross section markers and limit of each cross-section covering area.	
8	Detailed Cross section with proposed Work showing Horizontal / vertical clearance and protection details, with respect to existing DEWA services.	
9	Cross Section drawing details showing distribution of services corridor as per RTA ROW cross section or Approved Master Plan for Major projects: <ol style="list-style-type: none"> 1. Typical / Applicable cross section 2. Existing / As built Road Condition 3. Proposed road types with respect to DEWA existing Services /Corridors 	

S No	Submission Requirements for Construction NOC
10	Layout Plan showing the site arrangement for machineries, equipment, materials, and site access route.
11	Detailed Program of proposed work
12	Contractor's emergency contact details.
13	Detailed Method statement for the proposed works.
14	Trial pit /site verification from Transmission Line Maintenance department for 132/400 kV Cable/O.H.L (If applicable).
15	Trial pit/site verification from Distribution Maintenance department for 6.6/11/33 kV Cable/O.H.L (If applicable).
16	Trial pit verification from Project consultant/client for DEWA Water services (If applicable).
Note: DEWA will not be responsible for the reinstatement of special tiles, granite floors, imported tiles, etc..., The concerned Party should reinstate same as before, at their own cost. Undertaking letter to be submitted (Ref Annexure 9).	

60	NOC Type	Design NOC, Construction NOC
	Project Type	Road Projects – RTA Bridges/Interchanges/Ramps/Flyover/Roundabout
S No	Submission Requirements for Design NOC	
1	Covering Letter (Ref Annexure 1).	
2	Key plan showing the proposed work on Dubai map with North direction.	
3	General layout plan showing proposed works in DLTM coordinates with exact limit of the work.	
4	Layout drawings showing proposed work details and DEWA Services (Protection/Relocation/slewing) works details with superimposed existing Electricity Services along with existing ducts extension/protection details.	
5	Layout drawings showing proposed work details and DEWA Services (Protection/Relocation/Slewing) works details with superimposed existing Water Services along with existing sleeves extension/protection details.	
6	General cross section layout marker plan showing the location of the cross section markers and limits of each cross-section covering area.	
7	Detailed Cross section with proposed Work showing Horizontal / vertical clearance and protection details, with respect to existing DEWA services.	
8	Cross Section drawing details showing distribution of services corridors per RTA ROW cross section. <ol style="list-style-type: none"> 1. Typical / Applicable cross section 2. Existing / As built Road Condition 3. Proposed road types/Super structure foundation details with respect to DEWA existing Services /Corridors 	
S No	Submission Requirements for Construction NOC	
1	Covering Letter (Ref Annexure 1) together with DEWA reference number of approved Final Design NOC	
2	Key plan showing the proposed work on Dubai map with North direction.	
3	General layout plan showing proposed road/utility works in DLTM coordinates with exact limit of the work.	
4	Layout drawings showing proposed work details and DEWA Services (Protection/Relocation/slewing) works details with superimposed existing Electricity Services along with existing ducts extension/protection details.	
5	Layout drawings showing proposed work details and DEWA Services (Protection/Relocation/Slewing) works details with superimposed existing Water Services along with existing sleeves extension/protection details.	
6	Detailed drawings for proposed ducts as per DEWA Approved Design NOC.	
7	General cross section layout marker plan showing the location of the cross section markers and limit of each cross-section covering area.	
8	Detailed Cross section with proposed Work showing Horizontal / vertical clearance and protection details, with respect to existing DEWA services.	



S No	Submission Requirements for Construction NOC
9	Cross Section drawing details showing distribution of services corridor as per RTA ROW cross section <ol style="list-style-type: none"> 1. Typical / Applicable cross section 2. Existing / As built Road Condition 3. Proposed road types/Super structure foundation details with respect to DEWA existing Services /Corridors
10	Layout Plan showing the site arrangement for machineries, equipment, materials, and site access route.
11	Detailed Program of proposed work
12	Contractor's emergency contact details.
13	Detailed Method statement for the proposed works.
14	Trial pit /site verification from Transmission Line Maintenance department for 132/400 kV Cable/O.H.L (If applicable).
15	Trial pit/site verification from Distribution Maintenance department for 6.6/11/33 kV Cable/O.H.L (If applicable).
16	Trial pit verification from Project consultant/client for DEWA Water services (If applicable).

61	NOC Type	Design NOC, Construction NOC
	Project Type	Road Projects – Private Bridges/Interchanges/Ramps/Flyover/Roundabout
S No	Submission Requirements for Design NOC	
1	Covering Letter (Ref Annexure 1) together with Copy of approved master plan letter.	
2	Key plan showing the proposed work on Dubai map with North direction.	
3	General layout plan showing proposed road/utility works in DLTM coordinates with exact limit of the work.	
4	Layout drawings showing proposed works details and DEWA Services (Protection/Relocation/Slewing) works details with superimposed existing Electricity Services along with existing ducts extension/protection details.	
5	Layout drawings showing proposed work details and DEWA Services (Protection/Relocation/Slewing) works details with superimposed existing Water Services along with existing sleeves extension/protection details.	
6	Indicate DEWA Future ducts as per approved Master plan.	
7	General cross section layout marker plan showing the location of the cross section markers and limits of each cross-section covering area.	
8	Detailed Cross section with proposed Work showing Horizontal / vertical clearance and protection details, with respect to existing DEWA services.	
9	Cross Section drawing details showing distribution of services corridors per Approved Master Plan. <ol style="list-style-type: none"> 1. Typical / Applicable cross section 2. Existing / As built Road Condition 3. Proposed road types/Super structure foundation details with respect to DEWA existing Services /Corridors. 	
S No	Submission Requirements for Construction NOC	
1	Covering Letter (Ref Annexure 1) together with DEWA reference number of approved Final Design NOC	
2	Key plan showing the proposed work on Dubai map with North direction.	
3	General layout plan showing proposed road/utility works in DLTM coordinates with exact limit of the work.	
4	Layout drawings showing proposed works details and DEWA Services (Protection/Relocation/Slewing) works details with superimposed existing Electricity Services along with existing ducts extension/protection details.	
5	Layout drawings showing proposed work details and DEWA Services (Protection/Relocation/Slewing) works details with superimposed existing Water Services along with existing sleeves extension/protection details.	
6	Detailed drawings for proposed ducts as per DEWA Approved Design NOC.	
7	General cross section layout marker plan showing the location of the cross section markers and limits of each cross-section covering area.	
8	Detailed Cross section with proposed Work showing Horizontal / vertical clearance and protection details, with respect to existing DEWA services.	



S No	Submission Requirements for Construction NOC
9	Cross Section drawing details showing distribution of services corridor as per Approved Master Plan. <ol style="list-style-type: none"> 1. Typical / Applicable cross section 2. Existing / As built Road Condition 3. Proposed road types/Super structure foundation details with respect to DEWA existing Services /Corridors.
10	Layout Plan showing the site arrangement for machineries, equipment, materials, and site access route.
11	Detailed Program of proposed work.
12	Contractor's emergency contact details.
13	Detailed Method statement for the proposed works.
14	Trial pit /site verification from Transmission Line Maintenance department for 132/400 kV Cable/O.H.L (If applicable).
15	Trial pit/site verification from Distribution Maintenance department for 6.6/11/33 kV Cable/O.H.L (If applicable).
16	Trial pit verification from Project consultant/client for DEWA Water services (If applicable).



62	NOC Type	Design NOC, Construction NOC
	Project Type	Road Projects – Service Tunnel.
S No	Submission Requirements for Design NOC	
1	Covering Letter (Ref Annexure 1).	
2	Key plan showing the proposed work on Dubai map with North direction.	
3	General layout plan showing proposed utilities service tunnel in DLTM coordinates with exact limit of the work.	
4	Layout drawings showing proposed service tunnel structure details with utilities arrangements with superimposed existing Electricity Services.	
5	Layout drawings showing proposed service tunnel structure details with utilities arrangements along with superimposed existing Water Services.	
6	General cross section layout marker plan showing the location of the cross section markers and limits of each cross-section covering area.	
7	Detailed Cross section with proposed Work showing Horizontal / vertical clearance and protection details, with respect to existing DEWA services.	
8	Cross Section drawing details showing distribution of services corridor as per RTA ROW cross section or Approved Master Plan for Major projects: <ul style="list-style-type: none"> 1. Typical / Applicable cross section 2. Existing / As built Road Condition 3. Proposed structure details of the service tunnel with respect to DEWA existing Services /Corridors. 	
S No	Submission Requirements for Construction NOC	
1	Covering Letter (Ref Annexure 1) together with DEWA reference number of approved Final Design NOC	
2	Key plan showing the proposed work on Dubai map with North direction.	
3	General layout plan showing proposed utilities service tunnel in DLTM coordinates with exact limit of the work.	
4	Layout drawings showing proposed service tunnel structure details with utilities arrangements with superimposed existing Electricity Services.	
5	Layout drawings showing proposed service tunnel structure details with utilities arrangements with superimposed existing Water Services.	
6	General cross section layout marker plan showing the location of the cross section markers and limits of each cross-section covering area.	
7	Detailed Cross section with proposed Work showing Horizontal / vertical clearance and protection details, with respect to existing DEWA services.	
8	Cross Section drawing details showing distribution of services corridor as per RTA ROW cross section or Approved Master Plan for Major projects: <ul style="list-style-type: none"> 1. Typical / Applicable cross section 2. Existing / As built Road Condition 3. Proposed structure details of the service tunnel with respect to DEWA existing Services /Corridors. 	
9	Layout Plan showing the site arrangement for machineries, equipment, materials, and site access route.	
10	Detailed Program of proposed work	

S No	Submission Requirements for Construction NOC
11	Contractor's emergency contact details.
12	Detailed Method statement for the proposed works.
13	Trial pit /site verification from Transmission Line Maintenance department for 132/400 kV Cable/O.H.L (If applicable).
14	Trial pit/site verification from Distribution Maintenance department for 6.6/11/33 kV Cable/O.H.L (If applicable).
15	Trial pit verification from Project consultant/client for DEWA Water services (If applicable).



63	NOC Type	Design NOC, Construction NOC
	Project Type	Road Projects – Railway/Metro/Tram.
S No	Submission Requirements for Design NOC	
1	Covering Letter (Ref Annexure 1).	
2	Key plan showing the proposed work on Dubai map with North direction.	
3	General layout plan showing proposed road/utility works in DLTM coordinates with exact limit of the work.	
4	Layout drawings showing proposed works details and DEWA Services (Protection/Relocation/Slewing) works details with superimposed existing Electricity Services along with existing ducts extension/protection details.	
5	Layout drawings showing proposed work details and DEWA Services (Protection/Relocation/Slewing) works details with superimposed existing Water Services along with existing sleeves extension/protection details.	
6	General cross section layout marker plan showing the location of the cross section markers and limits of each cross-section covering area.	
7	Detailed Cross section with proposed Work showing Horizontal / vertical clearance and protection details, with respect to existing DEWA services.	
8	Cross Section drawing details showing distribution of services corridor as per RTA ROW cross section or Approved Master Plan for Major projects: <ol style="list-style-type: none"> 1. Typical / Applicable cross section 2. Existing / As built Road Condition 3. Proposed work with respect to DEWA existing Services /Corridors. 	
S No	Submission Requirements for Construction NOC	
1	Covering Letter (Ref Annexure 1) together with DEWA reference number of approved Final Design NOC	
2	Key plan showing the proposed work on Dubai map with North direction.	
3	General layout plan showing proposed road/utility works in DLTM coordinates with exact limit of the work.	
4	Layout drawings showing proposed works details and DEWA Services (Protection/Relocation/Slewing) works details with superimposed existing Electricity Services along with existing ducts extension/protection details.	
5	Layout drawings showing proposed work details and DEWA Services (Protection/Relocation/Slewing) works details with superimposed existing Water Services along with existing sleeves extension/protection details.	
6	Detailed drawings for proposed ducts as per DEWA Approved Design NOC.	
7	General cross section layout marker plan showing the location of the cross section markers and limit of each cross-section covering area.	
8	Detailed Cross section with proposed Work showing Horizontal / vertical clearance and protection details, with respect to existing DEWA services.	
9	Cross Section drawing details showing distribution of services corridor as per RTA ROW cross section or Approved Master Plan for Major projects: <ol style="list-style-type: none"> 1. Typical / Applicable cross section 2. Existing / As built Road Condition 3. Proposed work with respect to DEWA existing Services /Corridors. 	

S No	Submission Requirements for Construction NOC
10	Layout Plan showing the site arrangement for machineries, equipment, materials, and site access route.
11	Detailed Program of proposed work
12	Contractor's emergency contact details.
13	Detailed Method statement for the proposed works.
14	Trial pit /site verification from Transmission Line Maintenance department for 132/400 kV Cable/O.H.L (If applicable).
15	Trial pit/site verification from Distribution Maintenance department for 6.6/11/33 kV Cable/O.H.L (If applicable).
16	Trial pit verification from Project consultant/client for DEWA Water services (If applicable).



64	NOC Type	Construction NOC
	Project Type	Road Projects – Road Maintenance Works.
S No	Submission Requirements	
1	Covering Letter (Ref Annexure 1) .	
2	Key plan showing the proposed work on Dubai map with North direction.	
3	General layout plan showing proposed Road maintenance details in DLTM coordinates with exact limit of the work.	
4	Layout Plan showing the site arrangement for machineries, equipment, materials, and site access route.	
5	Detailed Program of proposed work	
6	Contractor's emergency contact details.	
7	Detailed Method statement for the proposed works.	
8	Site verification from Transmission Line Maintenance department for 132/400 kV Cable/O.H.L (If applicable).	



65	NOC Type	Shop Drawing Approval
	Project Type	Road Projects –Future Duct Works.
S No	Submission Requirements	
1	Covering Letter (Ref Annexure 1) together with DEWA reference number of approved Construction NOC.	
2	Key plan showing the proposed work on Dubai map with North direction.	
3	Layout plan showing Proposed Duct work details in DLTM Coordinates as per Approved B.O.Q for R.T.A Projects / Construction NOC for Developer Projects.	
4	Typical Duct arrangement details.	
5	Copy of Bill of Quantity (BOQ) Approval from DEWA (If Applicable).	
6	Detailed Program of proposed work	
7	Contractor's emergency contact details.	

66	NOC Type	Shop Drawing Approval
	Project Type	Road Projects – Extension / Protection of Ducts.
S No	Submission Requirements	
1	Covering Letter (Ref Annexure 1) together with DEWA reference number of approved Construction NOC.	
2	Key plan showing the proposed work on Dubai map with North direction.	
3	Layout plan showing proposed Duct work details in DLTM Coordinates with superimposed existing Electricity Services.	
4	Layout plan showing proposed Duct work details in DLTM Coordinates with superimposed existing Water Services.	
5	Cross section drawing details with proposed work showing Horizontal / vertical clearance and protection details, with respect to existing DEWA services.	
6	Layout Plan showing the site arrangement for machineries, equipment, materials, and site access route.	
7	Detailed Program of proposed work	
8	Contractor's emergency contact details.	
9	Detailed Method statement (including protection/crossing of DEWA existing services - If applicable).	
10	Trial pit /site verification from Transmission Line Maintenance department for 132/400 kV Cable/O.H.L (If applicable).	
11	Trial pit/site verification from Distribution Maintenance department for 6.6/11/33 kV Cable/O.H.L (If applicable).	
12	Trial pit verification from Project consultant/client for DEWA Water services (If applicable).	

67	NOC Type	Shop drawing Approval
	Project Type	Road Project - Electricity services diversion
S No	Submission Requirements	
1	Covering Letter (Ref Annexure 1) together with DEWA reference number of approved Construction NOC –If applicable.	
2	Detailed layout plan showing proposed cable diversion work in DLTM coordinates with type of cable and its length along with type of joint and number of joints.	
3	Detailed Cross section together with proposed cable Diversion work showing Horizontal / vertical clearance and protection details, with respect to existing DEWA services.	
4	Detailed Cross section drawing showing distribution of services corridor along with proposed work as per RTA ROW cross section or Approved master plan for major projects. <ol style="list-style-type: none"> 1. Typical / Applicable cross section 2. Existing / As built Road Condition 3. Proposed Electricity service details with respect to DEWA existing Services /Corridors. 	
5	Method statement for cable diversion work.	
6	Detailed Program of proposed work.	
7	Existing Transmission cable circuit names, cable joint/link box location with coordinates, along with clearance between the existing and proposed cable joint locations including verification by TLP staff.	



68	NOC Type	Shop drawing Approval
	Project Type	Road Projects – Service Protection
S No	Submission Requirements	
1	Covering Letter (Ref Annexure 1) together with DEWA reference number of approved Construction NOC –If applicable.	
2	Key plan showing the proposed work on Dubai map with North direction.	
3	Layout plan showing proposed Service Protection details in DLTM Coordinates with superimposed existing Electricity Services.	
4	Layout plan showing proposed Service Protection details in DLTM Coordinates with superimposed existing Water Services.	
5	Detailed Cross section with proposed Service protection works showing Horizontal / vertical clearance and protection details, with respect to existing DEWA services.	
6	Layout Plan showing the site arrangement for machineries, equipment, materials, and site access route.	
7	Detailed Program of proposed work	
8	Contractor's emergency contact details.	
9	Detailed Method statement for the proposed works.	
10	Trial pit /site verification from Transmission Line Maintenance department for 132/400 kV Cable/O.H.L (If applicable).	
11	Trial pit/site verification from Distribution Maintenance department for 6.6/11/33 kV Cable/O.H.L (If applicable).	
12	Trial pit verification from Project consultant/client for DEWA Water services (If applicable).	



69	NOC Type	Construction NOC
	Project Type	Road Projects – Grading Works.
S No	Submission Requirements	
1	Covering Letter (Ref Annexure 1) .	
2	Key plan showing the proposed work on Dubai map with North direction.	
3	General layout plan showing proposed grading work in DLTM coordinates with exact limit of the work.	
4	Layout drawings showing the proposed grading work and grading profile details with superimposed existing Electricity Services.	
5	Layout drawings showing the proposed grading work and grading profile details with superimposed existing Water Services.	
6	Cross section drawing details with proposed Grading work cutting/filling height including lowering/raising of DEWA services along with Horizontal / vertical clearance and protection details, with respect to existing DEWA services	
7	Detailed Cross section drawing showing distribution of services corridor along with proposed work as per RTA ROW cross section or Approved master plan for major projects. 1. Typical / Applicable cross section 2. Existing / As built Road Condition 3. Proposed Grading details with respect to DEWA existing Services /Corridors.	
8	Layout Plan showing the site arrangement for machineries, equipment, materials, and site access route.	
9	Detailed Program of proposed work.	
10	Contractor's emergency contact details.	
11	Detailed Method statement for the proposed works.	
12	Trial pit /site verification from Transmission Line Maintenance department for 132/400 kV Cable/O.H.L (If applicable).	
13	Trial pit/site verification from Distribution Maintenance department for 6.6/11/33 kV Cable/O.H.L (If applicable).	
14	Trial pit verification from Project consultant/client for DEWA Water services (If applicable).	



70	NOC Type	Design NOC, Construction NOC
	Project Type	Road Projects – Pedestrian Bridge
S No	Submission Requirements for Design NOC	
1	Covering Letter (Ref Annexure 1).	
2	Key plan showing the proposed work on Dubai map with North direction.	
3	Layout drawings showing proposed Pedestrian bridge structure details in DLTM Coordinates and DEWA services (Protection/Relocation/slewing) works with superimposed existing Electricity Services along with existing ducts extension/protection details.	
4	Layout drawings showing proposed Pedestrian bridge structure details in DLTM Coordinates and DEWA services (Protection/Relocation/slewing) works with superimposed existing Water Services along with existing sleeves extension/protection details.	
5	<ul style="list-style-type: none"> General cross section layout marker plan showing the location of the cross section markers Limit of each cross section covering area (If Applicable). 	
6	Detailed Cross section with proposed Work showing Horizontal / vertical clearance and protection details, with respect to existing DEWA services.	
7	<p>Cross Section drawing details showing distribution of services corridor as per RTA ROW cross section or Approved Master Plan for Major projects:</p> <ol style="list-style-type: none"> Typical / Applicable cross section Existing / As built Road Condition Proposed pedestrian bridge structure details with respect to DEWA existing Services /Corridors. 	
S No	Submission Requirements for Construction NOC	
1	Covering Letter (Ref Annexure 1) along with DEWA reference number of approved Final Design NOC (If applicable).	
2	Key plan showing the proposed work on Dubai map with North direction.	
3	Layout drawings showing proposed Pedestrian bridge structure details in DLTM coordinates and DEWA services (Protection/Relocation/slewing) works with superimposed existing Electricity Services along with existing ducts extension/protection details.	
4	Layout drawings showing proposed Pedestrian bridge structure details in DLTM Coordinates and DEWA services (Protection/Relocation/slewing) works with superimposed existing Water Services along with existing sleeves extension/protection details.	
5	<ul style="list-style-type: none"> General cross section layout marker plan showing the location of the cross section markers Limit of each cross section covering area (If Applicable). 	
6	Detailed Cross section with proposed Work showing Horizontal / vertical clearance and protection details, with respect to existing DEWA services.	
7	<p>Cross Section drawing details showing distribution of services corridor as per RTA ROW cross section or Approved Master Plan for Major projects:</p> <ol style="list-style-type: none"> Typical / Applicable cross section Existing / As built Road Condition Proposed pedestrian bridge structure details with respect to DEWA existing Services /Corridors. 	
8	Layout Plan showing the site arrangement for machineries, equipment, materials, and site access route.	
9	Detailed Program of proposed work	

S No	Submission Requirements for Construction NOC
10	Contractor's emergency contact details.
11	Detailed Method statement for the proposed works.
12	Trial pit /site verification from Transmission Line Maintenance department for 132/400 kV Cable/O.H.L (If applicable).
13	Trial pit/site verification from Distribution Maintenance department for 6.6/11/33 kV Cable/O.H.L (If applicable).
14	Trial pit verification from Project consultant/client for DEWA Water services (If applicable).

71	NOC Type	Design NOC, Construction NOC
	Project Type	Road Projects – Public Transport Projects (Bus Shelter/Bus Stop/Bus Layby)
S No	Submission Requirements for Design NOC	
1	Covering Letter (Ref Annexure 1).	
2	Key plan showing the proposed work on Dubai map with North direction.	
3	Layout drawings showing proposed work structure and foundation details and DEWA services (Protection/Relocation/slewing) works with superimposed existing Electricity Services along with existing ducts extension/protection details.	
4	Layout drawings showing proposed work structure and foundation details and DEWA services (Protection/Relocation/slewing) works with superimposed existing Water Services along with existing sleeves extension/protection details.	
5	<ul style="list-style-type: none"> General cross section layout marker plan showing the location of the cross section markers Limit of each cross section covering area (If Applicable). 	
6	Detailed Cross section with proposed Work showing Horizontal / vertical clearance and protection details, with respect to existing DEWA services.	
7	Cross Section drawing details showing distribution of services corridor as per RTA ROW cross section or Approved Master Plan for Major projects: <ol style="list-style-type: none"> Typical / Applicable cross section Existing / As built Road Condition Proposed work structure details with respect to DEWA existing Services /Corridors. 	
S No	Submission Requirements for Construction NOC	
1	Covering Letter (Ref Annexure 1) together with DEWA reference number of approved Final Design NOC (If applicable).	
2	Key plan showing the proposed work on Dubai map with North direction.	
3	Layout drawings showing proposed work structure and foundation details and DEWA services (Protection/Relocation/slewing) works with superimposed existing Electricity Services along with existing ducts extension/protection details.	
4	Layout drawings showing proposed work structure and foundation details and DEWA services (Protection/Relocation/slewing) works with superimposed existing Water Services along with existing sleeves extension/protection details.	
5	Detailed drawings for proposed ducts as per DEWA Approved Design NOC.	
6	<ul style="list-style-type: none"> General cross section layout marker plan showing the location of the cross section markers Limit of each cross section covering area (If Applicable). 	
7	Detailed Cross section with proposed Work showing Horizontal / vertical clearance and protection details, with respect to existing DEWA services.	
8	Cross Section drawing details showing distribution of services corridor as per RTA ROW cross section or Approved Master Plan for Major projects: <ol style="list-style-type: none"> Typical / Applicable cross section Existing / As built Road Condition Proposed work structure details with respect to DEWA existing Services /Corridors. 	
9	Layout Plan showing the site arrangement for machineries, equipment, materials, and site access route.	



S No	Submission Requirements for Construction NOC
10	Detailed Program of proposed work
11	Contractor's emergency contact details.
12	Detailed Method statement for the proposed works.
13	Trial pit /site verification from Transmission Line Maintenance department for 132/400 kV Cable/O.H.L (If applicable).
14	Trial pit/site verification from Distribution Maintenance department for 6.6/11/33 kV Cable/O.H.L (If applicable).
15	Trial pit verification from Project consultant/client for DEWA Water services (If applicable).

72	NOC Type	Design NOC, Construction NOC
	Project Type	Road Projects – Street Lighting
S No	Submission Requirements for Design NOC	
1	Covering Letter (Ref Annexure 1).	
2	Key plan showing the proposed work on Dubai map with North direction.	
3	General layout plan showing proposed Street light in DLTM coordinates with exact limit of the work.	
4	Layout drawings showing proposed Street light structure and foundation details and DEWA services (Protection/Relocation/slewing) works with superimposed existing Electricity Services.	
5	Layout drawings showing proposed Street light structure and foundation details and DEWA services (Protection/Relocation/slewing) works with superimposed existing Water Services.	
6	<ul style="list-style-type: none"> General cross section layout marker plan showing the location of the cross section markers Limit of each cross section covering area (If Applicable). 	
7	Detailed Cross section with proposed Work showing Horizontal / vertical clearance and protection details, with respect to existing DEWA services.	
8	Cross Section drawing details showing distribution of services corridor as per RTA ROW cross section or Approved Master Plan for Major projects: <ol style="list-style-type: none"> Typical / Applicable cross section Existing / As built Road Condition Proposed Street light structure and foundation details with respect to DEWA existing Services /Corridors. 	
S No	Submission Requirements for Construction NOC	
1	Covering Letter (Ref Annexure 1) together with DEWA reference number of approved Final Design NOC (If applicable).	
2	Key plan showing the proposed work on Dubai map with North direction.	
3	General layout plan showing proposed Street light in DLTM coordinates with exact limit of the work.	
4	Layout drawings showing proposed Street light structure and foundation details and DEWA services (Protection/Relocation/slewing) works with superimposed existing Electricity Services.	
5	Layout drawings showing proposed Street light structure and foundation details and DEWA services (Protection/Relocation/slewing) works with superimposed existing Water Services.	
6	<ul style="list-style-type: none"> General cross section layout marker plan showing the location of the cross section markers Limit of each cross section covering area (If Applicable). 	
7	Detailed Cross section with proposed Work showing Horizontal / vertical clearance and protection details, with respect to existing DEWA services.	
8	Cross Section drawing details showing distribution of services corridor as per RTA ROW cross section or Approved Master Plan for Major projects: <ol style="list-style-type: none"> Typical / Applicable cross section Existing / As built Road Condition Proposed Street light structure and foundation details with respect to DEWA existing Services /Corridors. 	
9	Layout Plan showing the site arrangement for machineries, equipment, materials, and site access route.	
10	Detailed Program of proposed work	

S No	Submission Requirements for Construction NOC
11	Contractor's emergency contact details.
12	Detailed Method statement for the proposed works.
13	Trial pit /site verification from Transmission Line Maintenance department for 132/400 kV Cable/O.H.L (If applicable).
14	Trial pit/site verification from Distribution Maintenance department for 6.6/11/33 kV Cable/O.H.L (If applicable).
15	Trial pit verification from Project consultant/client for DEWA Water services (If applicable).



73	NOC Type	Construction NOC
	Project Type	Road Projects – Traffic Signal
S No	Submission Requirements	
1	Covering Letter (Ref Annexure 1)	
2	Key plan showing the proposed work on Dubai map with North direction.	
3	Layout drawings showing proposed Traffic Signal structure and foundation details in DLTM Coordinates and DEWA services (Protection/Relocation/slewing) works with superimposed existing Electricity Services.	
4	Layout drawings showing proposed Traffic Signal structure and foundation details in DLTM Coordinates and DEWA services (Protection/Relocation/slewing) works with superimposed existing Water Services.	
5	Cross section drawing details with proposed Traffic Signal foundation details with Horizontal / vertical clearance and protection details, with respect to existing DEWA services	
6	Detailed Cross section drawing showing distribution of services corridor along with proposed work as per RTA ROW cross section or Approved master plan for major projects. <ol style="list-style-type: none"> 1. Typical / Applicable cross section 2. Existing / As built Road Condition 3. Proposed Traffic Signal structure and foundation details with respect to DEWA existing Services /Corridors. 	
7	Layout Plan showing the site arrangement for machineries, equipment, materials, and site access route.	
8	Detailed Program of proposed work	
9	Contractor's emergency contact details.	
10	Detailed Method statement for the proposed works.	
11	Trial pit /site verification from Transmission Line Maintenance department for 132/400 kV Cable/O.H.L (If applicable).	
12	Trial pit/site verification from Distribution Maintenance department for 6.6/11/33 kV Cable/O.H.L (If applicable).	
13	Trial pit verification from Project consultant/client for DEWA Water services (If applicable).	



74	NOC Type	Design NOC, Construction NOC
	Project Type	Road Projects – Addressing Signs/Traffic Signs (Ground mounted signs)
S No	Submission Requirements for Design NOC	
1	Covering Letter (Ref Annexure 1).	
2	Key plan showing the proposed Signs on Dubai map with North direction.	
3	Layout drawings showing proposed Signs structure and foundation details in DLTM Coordinates and DEWA services (Protection/Relocation/slewing) works with superimposed existing Electricity Services.	
4	Layout drawings showing proposed Signs structure and foundation details in DLTM Coordinates and DEWA services (Protection/Relocation/slewing) works with superimposed existing Water Services.	
5	General cross section layout marker plan showing the location of the cross section markers	
6	Detailed Cross section with proposed Work showing Horizontal / vertical clearance and protection details, with respect to existing DEWA services.	
7	Cross Section drawing details showing distribution of services corridor as per RTA ROW cross section or Approved Master Plan for Major projects: <ol style="list-style-type: none"> 1. Typical / Applicable cross section 2. Existing / As built Road Condition 3. Proposed Signs structure and foundation details with respect to DEWA existing Services /Corridors. 	
S No	Submission Requirements for Construction NOC	
1	Covering Letter (Ref Annexure 1) together with DEWA reference number of approved Final Design NOC (If applicable).	
2	Key plan showing the proposed Signs on Dubai map with North direction.	
3	Layout drawings showing proposed Signs structure and foundation details in DLTM Coordinates and DEWA services (Protection/Relocation/slewing) works with superimposed existing Electricity Services.	
4	Layout drawings showing proposed Signs structure and foundation details in DLTM Coordinates and DEWA services (Protection/Relocation/slewing) works with superimposed existing Water Services.	
5	General cross section layout marker plan showing the location of the cross section markers .	
6	Detailed Cross section with proposed Work showing Horizontal / vertical clearance and protection details, with respect to existing DEWA services.	
7	Cross Section drawing details showing distribution of services corridor as per RTA ROW cross section or Approved Master Plan for Major projects: <ol style="list-style-type: none"> 1. Typical / Applicable cross section 2. Existing / As built Road Condition 3. Proposed Signs structure and foundation details with respect to DEWA existing Services /Corridors. 	
8	Layout Plan showing the site arrangement for machineries, equipment, materials, and site access route.	
9	Detailed Program of proposed work	
10	Contractor's emergency contact details.	
11	Detailed Method statement for the proposed works.	



S No	Submission Requirements for Construction NOC
12	Trial pit /site verification from Transmission Line Maintenance department for 132/400 kV Cable/O.H.L (If applicable).
13	Trial pit/site verification from Distribution Maintenance department for 6.6/11/33 kV Cable/O.H.L (If applicable).
14	Trial pit verification from Project consultant/client for DEWA Water services (If applicable).

75	NOC Type	Design NOC, Construction NOC
	Project Type	Road Projects – Gantry/Cantilever (Traffic/Toll Gate/I.T.S)
S No	Submission Requirements for Design NOC	
1	Covering Letter (Ref Annexure 1).	
2	Key plan showing the proposed Gantry on Dubai map with North direction.	
3	Layout drawings showing proposed Gantry structure and foundation details in DLTM Coordinates and DEWA services (Protection/Relocation/slewing) works with superimposed existing Electricity Services.	
4	Layout drawings showing proposed Gantry structure and foundation details in DLTM Coordinates and DEWA services (Protection/Relocation/slewing) works with superimposed existing Water Services.	
5	General cross section layout marker plan showing the location of the cross section markers	
6	Detailed Cross section with proposed Work showing Horizontal / vertical clearance and protection details, with respect to existing DEWA services.	
7	Cross Section drawing details showing distribution of services corridor as per RTA ROW cross section or Approved Master Plan for Major projects: <ol style="list-style-type: none"> 1. Typical / Applicable cross section 2. Existing / As built Road Condition 3. Proposed Gantry structure and foundation details with respect to DEWA existing Services /Corridors. 	
S No	Submission Requirements for Construction NOC	
1	Covering Letter (Ref Annexure 1) together with DEWA reference number of approved Final Design NOC (If applicable).	
2	Key plan showing the proposed Gantry on Dubai map with North direction.	
3	Layout drawings showing proposed Gantry structure and foundation details in DLTM Coordinates and DEWA services (Protection/Relocation/slewing) works with superimposed existing Electricity Services.	
4	Layout drawings showing proposed Gantry structure and foundation details in DLTM Coordinates and DEWA services (Protection/Relocation/slewing) works with superimposed existing Water Services.	
5	General cross section layout marker plan showing the location of the cross section markers	
6	Detailed Cross section with proposed Work showing Horizontal / vertical clearance and protection details, with respect to existing DEWA services.	
7	Cross Section drawing details showing distribution of services corridor as per RTA ROW cross section or Approved Master Plan for Major projects: <ol style="list-style-type: none"> 1. Typical / Applicable cross section 2. Existing / As built Road Condition 3. Proposed Gantry structure and foundation details with respect to DEWA existing Services /Corridors. 	
8	Layout Plan showing the site arrangement for machineries, equipment, materials, and site access route.	
9	Detailed Program of proposed work	
10	Contractor's emergency contact details.	
11	Detailed Method statement for the proposed works.	



S No	Submission Requirements for Construction NOC
12	Trial pit /site verification from Transmission Line Maintenance department for 132/400 kV Cable/O.H.L (If applicable).
13	Trial pit/site verification from Distribution Maintenance department for 6.6/11/33 kV Cable/O.H.L (If applicable).
14	Trial pit verification from Project consultant/client for DEWA Water services (If applicable).

76	NOC Type	Construction NOC
	Project Type	Road Projects – Sound Barrier
S No	Submission Requirements	
1	Covering Letter (Ref Annexure 1).	
2	Key plan showing the proposed Sound Barrier on Dubai map with North direction.	
3	General layout plan showing proposed Sound Barrier in DLTM coordinates with exact limit of the work.	
4	Layout drawings showing proposed Sound Barrier structure and foundation details and DEWA services (Protection/Relocation/slewing) works with superimposed existing Electricity Services along with existing ducts extension/protection details.	
5	Layout drawings showing proposed Sound Barrier structure and foundation details and DEWA services (Protection/Relocation/slewing) works with superimposed existing Water Services along with existing sleeves extension/protection details.	
6	Cross section drawing details with proposed sound barrier foundation details with Horizontal / vertical clearance and protection details, with respect to existing DEWA services	
7	Detailed Cross section drawing showing distribution of services corridor along with proposed work as per RTA ROW cross section or Approved master plan for major projects. <ol style="list-style-type: none"> 1. Typical / Applicable cross section 2. Existing / As built Road Condition 3. Proposed Sound barrier foundation details with respect to DEWA existing Services /Corridors. 	
8	Layout Plan showing the site arrangement for machineries, equipment, materials, and site access route.	
9	Detailed Program of proposed work	
10	Contractor's emergency contact details.	
11	Detailed Method statement for the proposed works.	
12	Trial pit /site verification from Transmission Line Maintenance department for 132/400 kV Cable/O.H.L (If applicable).	
13	Trial pit/site verification from Distribution Maintenance department for 6.6/11/33 kV Cable/O.H.L (If applicable).	
14	Trial pit verification from Project consultant/client for DEWA Water services (If applicable).	

77	NOC Type	Construction NOC
	Project Type	Road Projects – Traffic Diversion
S No	Submission Requirements	
1	Covering Letter (Ref Annexure 1).	
2	Key plan showing the proposed work on Dubai map with North direction.	
3	General layout plan showing proposed road/utility works in DLTM coordinates with exact limit of the work.	
4	Layout drawings showing proposed road with pavement type and utility (Protection/Relocation/slewing) works details with superimposed existing Electricity Services along with existing ducts extension/protection details.	
5	Layout drawings showing proposed road with pavement type and utility (Protection/Relocation/Slewing) works details with superimposed existing Water Services along with existing sleeves extension/protection details.	
6	General cross section layout marker plan showing the location of the cross section markers and limits of each cross-section covering area.	
7	Cross section drawing details with proposed Traffic diversion with Horizontal / vertical clearance and protection details, with respect to existing DEWA services	
8	Detailed Cross section drawing showing distribution of services corridor along with proposed work as per RTA ROW cross section or Approved master plan for major projects. 1. Typical / Applicable cross section 2. Existing / As built Road Condition 3. Proposed Traffic Diversion details with respect to DEWA existing Services /Corridors.	
9	Layout Plan showing the site arrangement for machineries, equipment, materials, and site access route.	
10	Detailed Program of proposed work	
11	Contractor’s emergency contact details.	
12	Detailed Method statement for the proposed works.	
13	Trial pit /site verification from Transmission Line Maintenance department for 132/400 kV Cable/O.H.L (If applicable).	
14	Trial pit/site verification from Distribution Maintenance department for 6.6/11/33 kV Cable/O.H.L (If applicable).	
15	Trial pit verification from Project consultant/client for DEWA Water services (If applicable).	
Note: No need to submit NOC request to DEWA for any Traffic diversion within the existing road. However, NOC request to be submitted to DEWA in case of traffic diversion requires any additional road work/ arrangements.		

78	NOC Type	Design NOC, Construction NOC
	Project Type	Road Projects – Cycle/Jogging Track
S No	Submission Requirements for Design NOC	
1	Covering Letter (Ref Annexure 1).	
2	Key plan showing the proposed work on Dubai map with North direction.	
3	General layout plan showing proposed road works in DLTM coordinates with exact limit of the work.	
4	Layout drawings showing proposed road with pavement type and DEWA Services (Protection/Relocation/slewing) works details with superimposed existing Electricity Services along with existing ducts extension/protection details.	
5	Layout drawings showing proposed road with pavement type and DEWA Services (Protection/Relocation/Slewing) works details with superimposed existing Water Services along with existing sleeves extension/protection details.	
6	General cross section layout marker plan showing the location of the cross section markers and limits of each cross-section covering area.	
7	Detailed Cross section with proposed Work showing Horizontal / vertical clearance and protection details, with respect to existing DEWA services.	
8	Cross Section drawing details showing distribution of services corridor as per RTA ROW cross section or Approved Master Plan for Major projects: <ol style="list-style-type: none"> 1. Typical / Applicable cross section 2. Existing / As built Road Condition 3. Proposed road types with respect to DEWA existing Services /Corridors 	
S No	Submission Requirements for Construction NOC	
1	Covering Letter (Ref Annexure 1) together with DEWA reference number of approved Final Design NOC	
2	Key plan showing the proposed work on Dubai map with North direction.	
3	General layout plan showing proposed road/utility works with DLTM coordinates with exact limit of the work.	
4	Layout drawings showing proposed road with pavement type and DEWA Services (Protection/Relocation/slewing) works details with superimposed existing Electricity Services along with existing ducts extension/protection details.	
5	Layout drawings showing proposed road with pavement type and DEWA Services (Protection/Relocation/Slewing) works details with superimposed existing Water Services along with existing sleeves extension/protection details.	
6	Detailed drawings for proposed ducts as per DEWA Approved Design NOC. (If Applicable)	
7	General cross section layout marker plan showing the location of the cross section markers and limit of each cross-section covering area.	
8	Detailed Cross section with proposed Work showing Horizontal / vertical clearance and protection details, with respect to existing DEWA services.	
9	Cross Section drawing details showing distribution of services corridor as per RTA ROW cross section or Approved Master Plan for Major projects: <ol style="list-style-type: none"> 1. Typical / Applicable cross section 2. Existing / As built Road Condition 3. Proposed road types with respect to DEWA existing Services /Corridors 	

S No	Submission Requirements for Construction NOC
10	Layout Plan showing the site arrangement for machineries, equipment, materials, and site access route.
11	Detailed Program of proposed work
12	Contractor's emergency contact details.
13	Detailed Method statement for the proposed works.
14	Undertaking Letter (Ref Annexure 10)
15	Trial pit /site verification from Transmission Line Maintenance department for 132/400 kV Cable/O.H.L (If applicable).
16	Trial pit/site verification from Distribution Maintenance department for 6.6/11/33 kV Cable/O.H.L (If applicable).
17	Trial pit verification from Project consultant/client for DEWA Water services (If applicable).



79	NOC Type	Construction NOC
	Project Type	Road Projects – Others
S No	Submission Requirements	
1	Covering Letter (Ref Annexure 1).	
2	Key plan showing the proposed work on Dubai map with North direction.	
3	General layout plan showing proposed work along in DLTM coordinates with exact limit of the work.	
4	Layout plan showing proposed work details with superimposed existing Electricity Services.	
5	Layout plan showing proposed work details with superimposed existing Water Services.	
6	Detailed Cross section with proposed works showing Horizontal / vertical clearance and protection details, with respect to existing DEWA services. (If Applicable)	
7	Cross section drawing showing distribution of services corridor along with proposed work as per RTA ROW cross section or Approved master plan for major projects.(If Applicable) <ol style="list-style-type: none"> 1. Typical / Applicable cross section 2. Existing / As built Road Condition 3. Proposed Work details with respect to DEWA existing Services /Corridors. 	
8	Layout plan showing the site arrangement for machineries, equipment, materials, and site access route.	
9	Detailed Program of proposed work	
10	Contractor's emergency contact details.	
11	Detailed Method statement (including protection/crossing of DEWA existing services - If applicable).	
12	Trial pit /site verification from Transmission Line Maintenance department for 132/400 kV Cable/O.H.L (If applicable).	
13	Trial pit/site verification from Distribution Maintenance department for 6.6/11/33 kV Cable/O.H.L (If applicable).	
14	Trial pit verification from Project consultant/client for DEWA Water services (If applicable).	



80	NOC Type	Revalidation NOC
	Project Type	All
S No	Submission Requirements	
1	Covering Letter (Ref Annexure 1) together with DEWA reference number of previously approved NOC.	
2	Key plan showing the proposed work on Dubai map with north direction.	
3	Original DEWA approved NOC for Manual Application.	
4	Detailed layout drawing showing the balance (uncompleted) works and the completed work.	
5	Detailed program of works.	
6	Copy of NOC for the hold areas (If any) to be submitted.	

10. BUSINESS SUPPORT CONTACT DETAILS

SI No	Services Description	Function Department	Email	Contact No	Fax No
1	No Objection Certificate (NOC)	Infrastructure Information & Permits (II&P)	TP.II&P@dewa.gov.ae	04-3221614	04-3072239
2	Shop drawing approval-Electricity	Infrastructure Information & Permits (II&P)	TP.II&P@dewa.gov.ae	04-3221262	04-3072239
3	BOQ approval for Electricity Ducts	Infrastructure Information & Permits (II&P)	TP.II&P@dewa.gov.ae	04-3221280 04-3221268	04-3072239
4	Material approval for cable diversion-Electricity	Infrastructure Information & Permits (II&P)	TP.II&P@dewa.gov.ae	04-3221280 04-3221268	04-3072239
5	Estimation for Cable relocation within R.O.W(Under Road Projects)- HV	Infrastructure Information & Permits (II&P)	TP.II&P@dewa.gov.ae	04-3221280 04-3221268	04-3072239
6	Infrastructure Project As Built drawing approval- (Electricity & Water)	Infrastructure Information & Permits (II&P)	TP.II&P@dewa.gov.ae	04-3221280 04-3221268	04-3072239
7	Infrastructure Project Completion Certificate - (Electricity & Water)	Infrastructure Information & Permits (II&P)	TP.II&P@dewa.gov.ae	04-3221280 04-3221268	04-3072239
8	Trial pit / Site verification for HV services	Distribution Maintenance (DM)	DP.MZ3@dewa.gov.ae	04-5066565 04-5066568 050-6457594	—
9	Work supervision request for Existing HV cable Protection	Distribution Maintenance (DM)	DP.MZ3@dewa.gov.ae	04-5066630 04-5066570	04-5066791 04-5066794
10	Work supervision request for HV OHL services	Distribution Maintenance (DM)	DP.MZ3@dewa.gov.ae	04-5066630 04-5066570	04-5066791 04-5066794
11	HV Cables Shutdown for Relocation	Distribution Project Planning	Mohamed.Hathab@dewa.gov.ae	04-5066272 055-9338638	04-3983635
			ananthakumar.r@dewa.gov.ae	04-5066189 055-8369550	
			Muthukumar.R@dewa.gov.ae	04-5066531 050-2365817	
12	Supervision request for diversion Existing HV Services (Cables and Ducts)	Project execution (Distribution Project Planning)	Mhossain@dewa.gov.ae Ratan.Roy@dewa.gov.ae	04-5066251 04-5066250	04-3983635
13	Laying of HV Cables (6.6/11/33 kV)	Project execution (Distribution)	Amrou.Mousa@dewa.gov.ae Biju.Nair@dewa.gov.ae	055-5100210	04-3983635
14	Estimation for HV cable diversion within the plot	PN&E-NM	CS.InfrastructureServices@dewa.gov.ae	04-322-7965	04-322-9094

SI No	Services Description	Function Department	Email	Contact No	Fax No
15	Electricity Power supply	Connection Service	CSD.NOC@dewa.gov.ae	04-5066131	—
16	Building NOC	Connection Service	CSD.NOC@dewa.gov.ae	04-5066131	—
17	Trial pit / Site verification for EHV services	Transmission Line Maintenance (TLM)	tp.tlm@dewa.gov.ae	04-3221547 04-3227929	04-3229095
18	Work Intimation/Supervision for EHV services	Transmission Line Maintenance (TLM)	tp.tlm@dewa.gov.ae	04-3221547 04-3227929	04-3229095
19	Shut down for EHV -OHL services	TLM-OHL Maintenance	Renato.Padilla@dewa.gov.ae ashraf.albawaleez@dewa.gov.ae	04-3221524 04-3221528	-
20	Shut down for Existing EHV Cable	TLM-Cable Maintenance	Feras.Ibrahim@dewa.gov.ae	04-3221539	-
21	Laying of EHV Services	Project Transmission	Mohamed.Idris@dewa.gov.ae	04-3221843	04-3229069
22	Trial pit / Site verification for Gas/Fuel lines	Commissioning Department	Commissioning.Dept@dewa.gov.ae	04-8024355	—
23	Permit to Work (PTW) for working within JAPS- Power station and near/within Gas fuel lines	Commissioning Department	Commissioning.Dept@dewa.gov.ae	04-8024355	—
24	Master plan approval- Electricity	Power Transmission Planning (PTP)	Maria.Rosa@dewa.gov.ae	04-3220631 04-3220680	04-3307465
25	Master plan approval- Water	Water P&E and New Connection	Walid.Chahoud@dewa.gov.ae amer.jawad@dewa.gov.ae	04-3220631 04-3220680	04-3307465
26	Shop drawing approval Road Project-Water	Water P&E and New Connection	Mohamed.ElSergany@dewa.gov.ae abdalla.fayel@dewa.gov.ae	04-3220632 04-3220672	04-3307465
27	Shop drawing approval Developer Project-Water	Water P&E and New Connection	Walid.Chahoud@dewa.gov.ae amer.jawad@dewa.gov.ae	04-3220631 04-3220680	04-3307465
28	Material approval for Water Services	Water P&E and New Connection	Syed.Gilani@dewa.gov.ae Ajmalsen.AbdulLatheef@dewa.gov.ae	04-3220624 04-3220614	04-3307465
29	Shut down for Water networks	Water P&E and New Connection	RickY.Telos@dewa.gov.ae Awad.Awad@dewa.gov.ae	04-3220684 04-3220674	04-3307465
30	New connection for Water	Water P&E and New Connection	Hussain.Albolooshi@dewa.gov.ae	04-3220651	04-3307465
31	Work supervision request for Water services	Water Maintenance Department	NWM@dewa.gov.ae	04-3475607	04-3470272 04-3229060

11. NOC DOCUMENTS ARRANGEMENTS

The applicant should submit the soft copy in two type of formats as shown below:



PDF. File



Micro Station. File (Version 7)

Note:

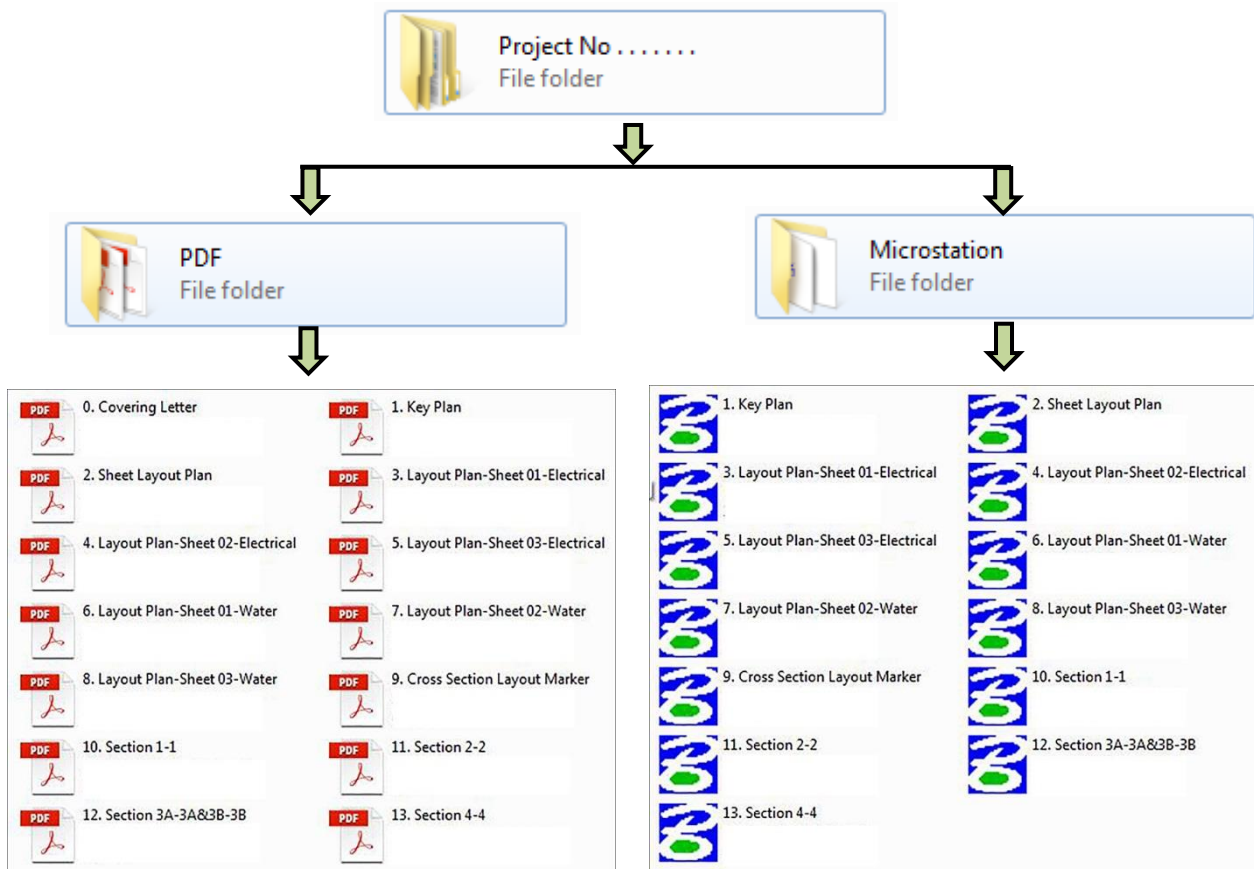
For Road Projects – An additional file in Micro station has to be submitted by the applicant to highlight the outline of the project with polyline feature. The file should be named as “Limit of Project”

The applicant should label the following information on front face of CD

In case of manual submission is made to DEWA; the Customer must attach a CD that includes soft copy of the submission’s documents and drawings must be submitted to DEWA.



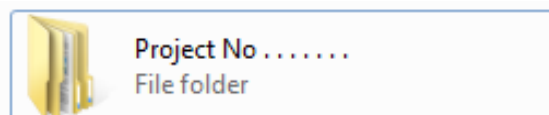
The applicant should arrange the folders of soft copy as shown below:



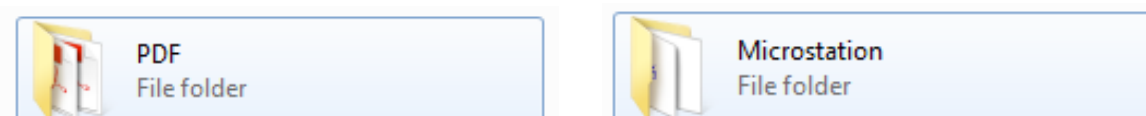
☒ **Note:** The format of Soft Copy for Revalidation NOC's should be in PDF.

The applicant should follow the procedure for arranging documents within the soft copy (CD) as per the following

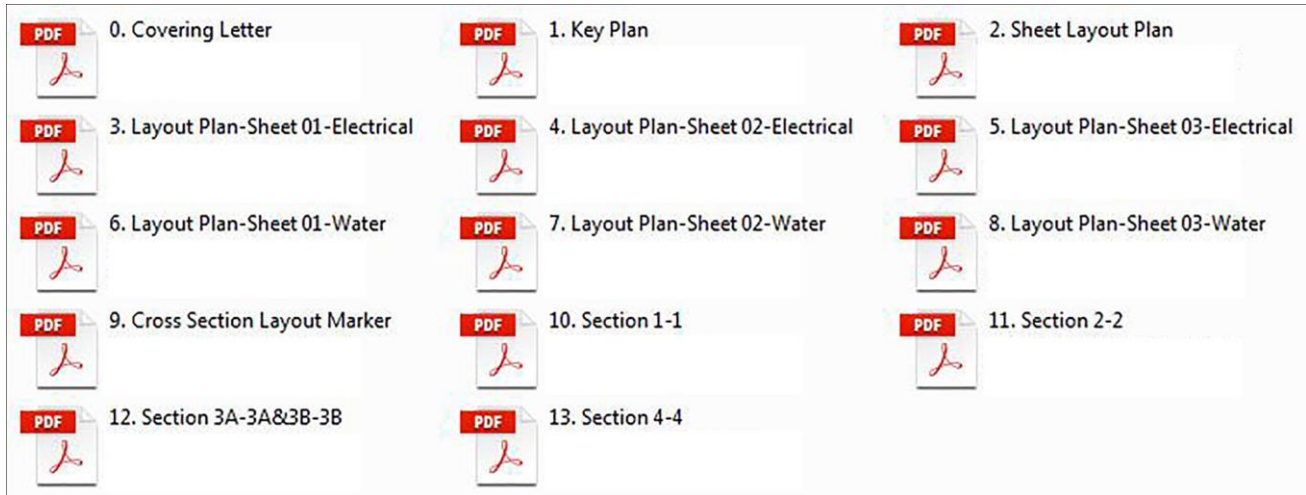
1) Title of the main folder should be Project No



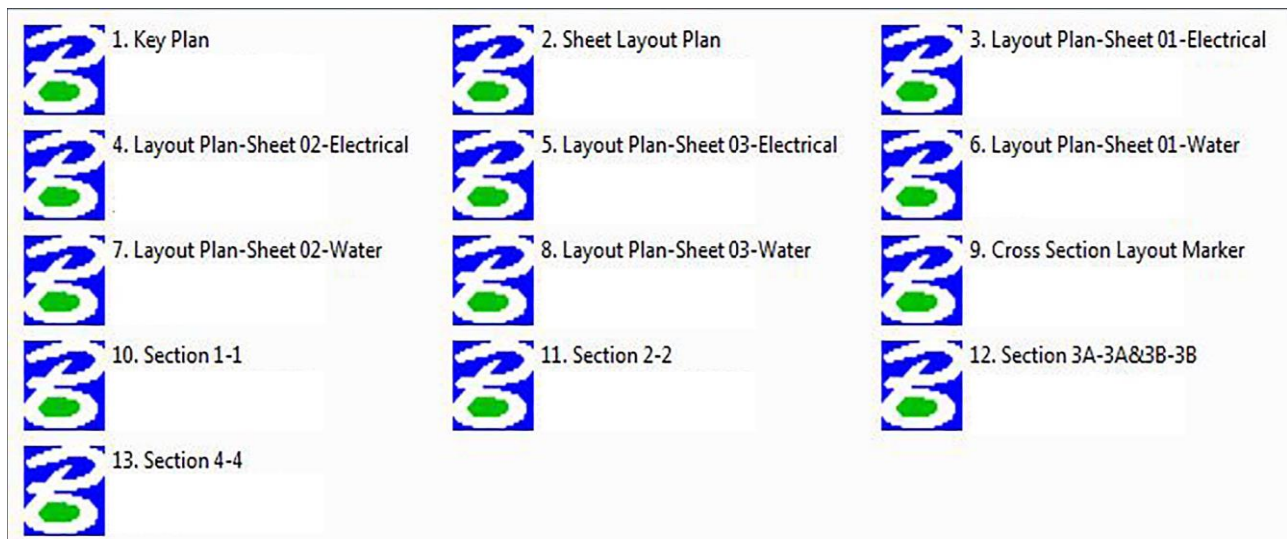
2) Main folder (Documents and Drawings) should be divided into sub - folders as below



3) Typical example of sub-folder for PDF files is shown below



4) Typical example of sub-folder for Microstation files (drawings only) is shown below



12. ANNEXURE SHEETS

Annexure 1

Format for Covering Letter

Letter Ref:.....

R.T.A NOC No: xxxxxxxx-xxxx

Attention to: Eng. Amina Ali Hashem
Sr. Manager- Infrastructure Information & Permits Dept.

Project No & Name:

Subject :

(* Along with the subject mention Previous DEWA Approved NOC Number. xxxxxxxxx (If Applicable))

“Scope of work details”

.....
.....
.....
.....

“Starting & Completion Dates of the proposed work (If Applicable) “

“**Drawing Titles“

.....
.....
.....

“Contact Details “

Project Engineer and Coordinator: Name & Contact Details

Project Manager

Name & Signature

Contact Details

* Mention DEWA Approved NOC Reference numbers for the same project.

For example: For submitting the construction NOC mention **Design** NOC reference number,

For revalidation mention **Construction** NOC or previous **Revalidation** reference number,

For NDCM or Open cut mention the **Construction** NOC of the route approval and so on

** Drawing Title should have the relation to the drawing details (Refer sample drawing file names).



Annexure 2

Undertaking Letter Format for Dewatering works

Letter Ref:

R.T.A NOC No: xxxxxxxx-xxxx (If Applicable)

Attention to: Eng. Amina Ali Hashem
 Sr. Manager- Infrastructure Information & Permits Dept.

Plot /Project Number:

Subject : Undertaking letter for Dewatering/Discharge route.

We, (Contractor's Name), hereby undertake that, the dewatering will be monitored 24/7 and will stop immediately in case of any leakage in dewatering system and also will remove /relocate dewatering discharge system under DEWA Supervision as and when required by DEWA.

Moreover, we further undertaking the following.

- Proposed dewatering discharge pipeline laying on the ground level only.
- Works will be carried out by manually.
- No water leakage in DEWA corridor.
- Discharge Pipeline joints will not come above/inside the DEWA Services/Corridor.
- In case of emergency/leakage, repair of the pipeline will be done immediately.
- Ramp will be provided at DEWA existing access road area for easy movement of DEWA vehicle in the road crossing area.
- DEWA access road will not be blocked or damaged.

Duration and tentative Dewatering/Discharge route removal date:

Emergency Site Contact Details:

Project Manager

Signature

Contact Details

Note:

The services existing in the above and below ground own by DEWA are called DEWA services
 (For example: Electricity cables (LV/HV/EHV/OHL) Joints joint bay/Transition joints Communication cables (F.O/Scada/Pilot)
 Water pipeline/ chamber /manholes/RTU and gas fuel pipeline, etc...,)



Annexure 3

Undertaking Letter Format for Lagoons

Letter Ref:

R.T.A NOC No: xxxxxxxx-xxxx (If Applicable)

Attention to: Eng. Amina Ali Hashem
Sr. Manager- Infrastructure Information & Permits Dept.

Plot /Project Number:

Subject : Undertaking letter for Lagoons.

We, (Contractor's Name), hereby undertake that, the lagoons and its related activities will be terminated/removed with immediate effect as instructed by DEWA or in case of any probable risk affecting/damaging DEWA services and further we confirm that, no water leakage on DEWA Services/Corridor.

After completion of the work the area will be reinstate in original condition and confirm with DEWA.

Emergency Site Contact Details:

Project Manager

Signature

Contact Details

Note:

The services existing in the above and below ground own by DEWA are called DEWA services
(For example: Electricity cables (LV/HV/EHV/OHL) Joints joint bay/Transition joints Communication cables (F.O/Scada/Pilot)
Water pipeline/ chamber /manholes/RTU and gas fuel pipeline, etc.,)



Annexure 4

Undertaking Letter Format for Shoring

Letter Ref:

R.T.A NOC No: xxxxxxxx-xxxx (If Applicable)

Attention to: Eng. Amina Ali Hashem
 Sr. Manager- Infrastructure Information & Permits Dept.

Plot Number:

Subject : Undertaking letter for building shoring anchors removal.

We, (Contractor/Client name), hereby undertake that, the Building Shoring anchors towards the road side installed during construction will be removed once the superstructure of the ground floor building is completed or as and when required by DEWA without any defects/damages to DEWA Services.

Anchor removal date: xx-xx-xxxx

Project Manager

Signature

Contact Details

I, (Client/Owner Name), assure that the anchors on road side will be removed by the contractor, if not removed by the contractor then it will be removed at my own cost.

Client/Owner Name

Signature

Contact Details

Note:

The services existing in the above and below ground own by DEWA are called DEWA services
 (For example: Electricity cables (LV/HV/EHV/OHL) Joints joint bay/Transition joints Communication cables (F.O/Scada/Pilot)
 Water pipeline/ chamber /manholes/RTU and gas fuel pipeline, etc...,)



Annexure 5

Undertaking Letter Format for **Temporary Scaffolding**

 (Maintenance/repair/decoration etc...)

Letter Ref:

R.T.A NOC No: xxxxxxxx-xxxx (If Applicable)

Attention to: Eng. Amina Ali Hashem

 Sr. Manager- Infrastructure Information & Permits Dept.

Plot/Project Number:

Subject : Undertaking letter for the removal of temporary scaffolding.

We (Contractor Name) hereby undertake that, "The scaffolding will be fixed in a proper way in order to avoid collapse and it will be removed with immediate effect as instructed by DEWA or once the work is completed".

Proposed scaffolding will not come over the existing Joint bay/Link box/ Water valve chambers.

Tentative Scaffolding removal date: xx-xx-xxxx

Emergency Site Contact Details:

Project Manager

Name & Signature

Contact Details



Annexure 6

Undertaking Letter Format for Landscaping

Letter Ref:

R.T.A NOC No: xxxxxxxx-xxxx (If Applicable)

Attention to: Eng. Amina Ali Hashem
 Sr. Manager- Infrastructure Information & Permits Dept.

Plot /Project Number:

Subject : Undertaking letter for removal of Hard / Soft landscaping and Structures.

We, (Client/Owner), hereby undertake, to remove the Hard and Soft landscaping or any structure in DEWA Reservation to carry out Emergency Maintenance/Repair/Proposed work for DEWA Services without prior notice. All necessary re-instatement works related to the landscaping removal will be carried out by us at our own cost. DEWA have no liability whatsoever in this respect. We further confirm that we shall be held fully liable for any defects/damages that might develop by us on DEWA services".

Client/Owner

Name & Signature

Contact Details

Note:

The services existing in the above and below ground own by DEWA are called DEWA services
 (For example: Electricity cables (LV/HV/EHV/OHL) Joints joint bay/Transition joints Communication cables (F.O/Scada/Pilot)
 Water pipeline/ chamber /manholes/RTU and gas fuel pipeline, etc...,)



Annexure 7

Undertaking Letter Format for Fencing

Letter Ref:

R.T.A NOC No: xxxxxxxx-xxxx (If Applicable)

Attention to: Eng. Amina Ali Hashem
Sr. Manager- Infrastructure Information & Permits Dept.

Plot Number:

Subject : Undertaking letter for removal and re – instatement of fencing.

We, (Client/Owner), hereby undertake to remove the fencing to carry out Emergency Maintenance/Repair/Proposed work for DEWA Services without prior notice. All necessary Reinstatement works related to the fencing removal will be carried out by us at our own cost. DEWA have no liability whatsoever in this respect. We further confirm that, 24/7 open access will be provided for patrolling and maintenance staff of DEWA and construction activity / dumping material/site offices/project sign board will not be allowed inside the fencing area within the vicinity of DEWA corridor/services unless the relevant NOC is obtained from DEWA.

Also, we hereby undertake the following:

1. DEWA services will be barricaded properly and no access will be provided over it.
2. DEWA services will be marked and sign boards installed for indicating the number of services and its depth.
3. DEWA services crossing at the Access area (Entry & Exit) will be marked and protected as per DEWA Standard Specification and staff guidance.

Moreover, we shall be held fully liable for any defects/damages that might develop by us on DEWA services.

Emergency Contact Details:

Project Manager

Signature

Contact Details

Client/Owner Name

Signature

Contact Details

Note:

The services existing in the above and below ground own by DEWA are called DEWA services
(For example: Electricity cables (LV/HV/EHV/OHL) Joints joint bay/Transition joints Communication cables (F.O/Scada/Pilot)
Water pipeline/ chamber /manholes/RTU and gas fuel pipeline, etc.,)



Annexure 8

Undertaking Letter Format for Special Tiles

Letter Ref:

R.T.A NOC No: xxxxxxxx-xxxx (If Applicable)

Attention to: Eng. Amina Ali Hashem
Sr. Manager- Infrastructure Information & Permits Dept.

Plot Number:

Subject : Undertaking letter

We, (Client/Owner), hereby undertake, to remove the Special Tiles, Granite floors, Imported tiles, road, parking and any structure in DEWA Services/Reservation, to carry out Emergency Maintenance/Repair/Proposed work for DEWA Services without prior notice. All necessary reinstatement works related to the removal will be carried out by us at our own cost. DEWA have no liability whatsoever in this respect.

Emergency Contact Details:

Client/Owner

Name & Signature

Contact Details

Email:

Phone:

Mobile:

Fax:

Note:

The services existing in the above and below ground own by DEWA are called DEWA services
(For example: Electricity cables (LV/HV/EHV/OHL) Joints joint bay/Transition joints Communication cables (F.O/Scada/Pilot)
Water pipeline/ chamber /manholes/RTU and gas fuel pipeline, etc.,)

Annexure 9

Undertaking Letter Format for Working Under OHL

Letter Ref:

R.T.A NOC No: xxxxxxxx-xxxx (If Applicable)

Attention to: Eng. Amina Ali Hashem
 Sr. Manager- Infrastructure Information & Permits Dept.

Plot Number:

Subject : Undertaking letter

We, (Contractor), hereby undertake, the following

1. The construction activities within OHL corridor or under OHL line will be completed as within the due date as mentioned in the NOC.
2. Height limit gantries will be placed as per TLP staff supervision.
3. Machineries working/boom height will not exceed more than 5.5 m
4. Pylon will be protected with concrete crash barrier as mentioned in the drawing.
5. No Damage/Cutting of the access road
6. Regular watering and maintenance repair work will be done for access road.
7. In case of any damages to DEWA Services will be rectified as per DEWA norms.

Emergency Contact Details:

Project Manager

Name & Signature

Contact Details

Note:

The services existing in the above and below ground own by DEWA are called DEWA services
 (For example: Electricity cables (LV/HV/EHV/OHL) Joints joint bay/Transition joints Communication cables (F.O/Scada/Pilot)
 Water pipeline/ chamber /manholes/RTU and gas fuel pipeline, etc.,)



Annexure 10

Undertaking Letter Format for Cycle/Jogging Track

Letter Ref:

R.T.A NOC No: xxxxxxxx-xxxx (If Applicable)

Attention to: Eng. Amina Ali Hashem
Sr. Manager- Infrastructure Information & Permits Dept.

Plot /Project Number:

Subject : Undertaking letter.

We, (Client/Owner), hereby undertake, to 24/7 access will provided to DEWA Reservation to carry out Emergency Maintenance/Repair/Proposed work for DEWA Services without prior notice. All necessary re-instatement works related to the emergency work will be carried out by us at our own cost. DEWA have no liability whatsoever in this respect. We further confirm that we shall be held fully liable for any defects/damages that might develop by us on DEWA services". In addition to the above we assure that DEWA emergency/repair team can occupy/block the Cycle/Jogging Track for materials machineries movement and dumping of excavated materials due to emergency work.

Client/Owner

Name & Signature

Contact Details

Note:

The services existing in the above and below ground own by DEWA are called DEWA services

(For example: Electricity cables (LV/HV/EHV/OHL) Joints joint bay/Transition joints Communication cables (F.O/Scada/Pilot)

Water pipeline/ chamber /manholes/RTU and gas fuel pipeline, etc.,)



13. CUSTOMERS FEEDBACK



Do you want to tell us that we are doing good job?



Do you need more information about the Submission guidelines?



Do you want to suggest us a better way to serve you?



What are you expecting from Infrastructure Information & Permits Department for the improvement of Quality Services?



Register and apply

Online through the
following links:

<http://esuggest.dubai.ae/>

Contact

04 – 3221614

TP.II&P@dewa.gov.ae

Visit

“Customer Service Center
NOC” at DEWA Al Warsan
Office

“QUALITY BEGINS WITH COMPLIANCE FOR EXCELLENCE TO FOLLOW”

