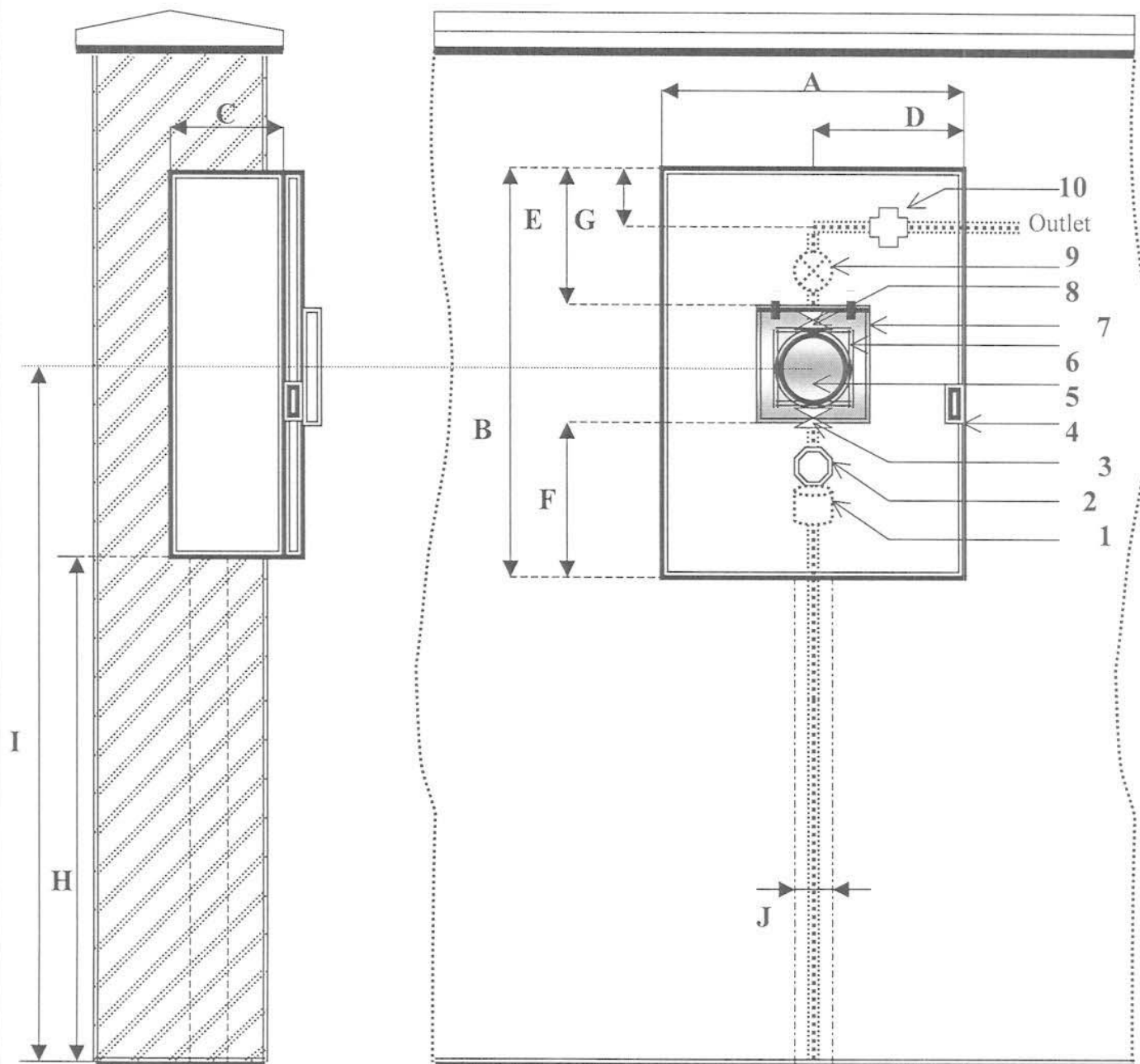


## IMS (Intelligent Metering System) Project

### Arrangement of Water Metering Cabinet On Compound Wall



Dimensions in CM

A	B	C	D	E	F	G	H	I	J
40	60	20	20	20	25	10	80 (Min:)	120 (Max:)	7.5 (dia:)

1	2	3	4	5	6	7	8	9	10
G.M.P.F Adaptor (1" x 1/2")	G.M Stop Cock (1/2")	Inlet Nozzle	Pad Locking Arrangement (Hole Size: 10mm dia.)	Water Meter	Meter Viewing Perspex (Size: 12.5cm x 12.5cm)	Protection Cover with Hinges on Top (Size: 15cm x 15cm)	Outlet Nozzle	Gate Valve (Consumer Side)	Union (Threaded Type)

**Note:**

- Meter Viewing Perspex (Min: 5mm thickness) with Hinged Type Protection Cover.
- Threaded type union is proposed for the purpose of replacing the meter with different meter lengths.
- Minimum 2 mtr. clearance shall be maintained between electricity and water service points.